

2000 KANSAS CITY KS 661 AUG 30 2000 KANSAS

FIRST CLASS

NEKLS
NORTHEAST KANSAS
LIBRARY SYSTEM

3300 Clinton Parkway Court
Suite 100
Lawrence, KS 66047-2629



Mary Burchill
1612 St. Andrews Drive
Lawrence, KS 66047

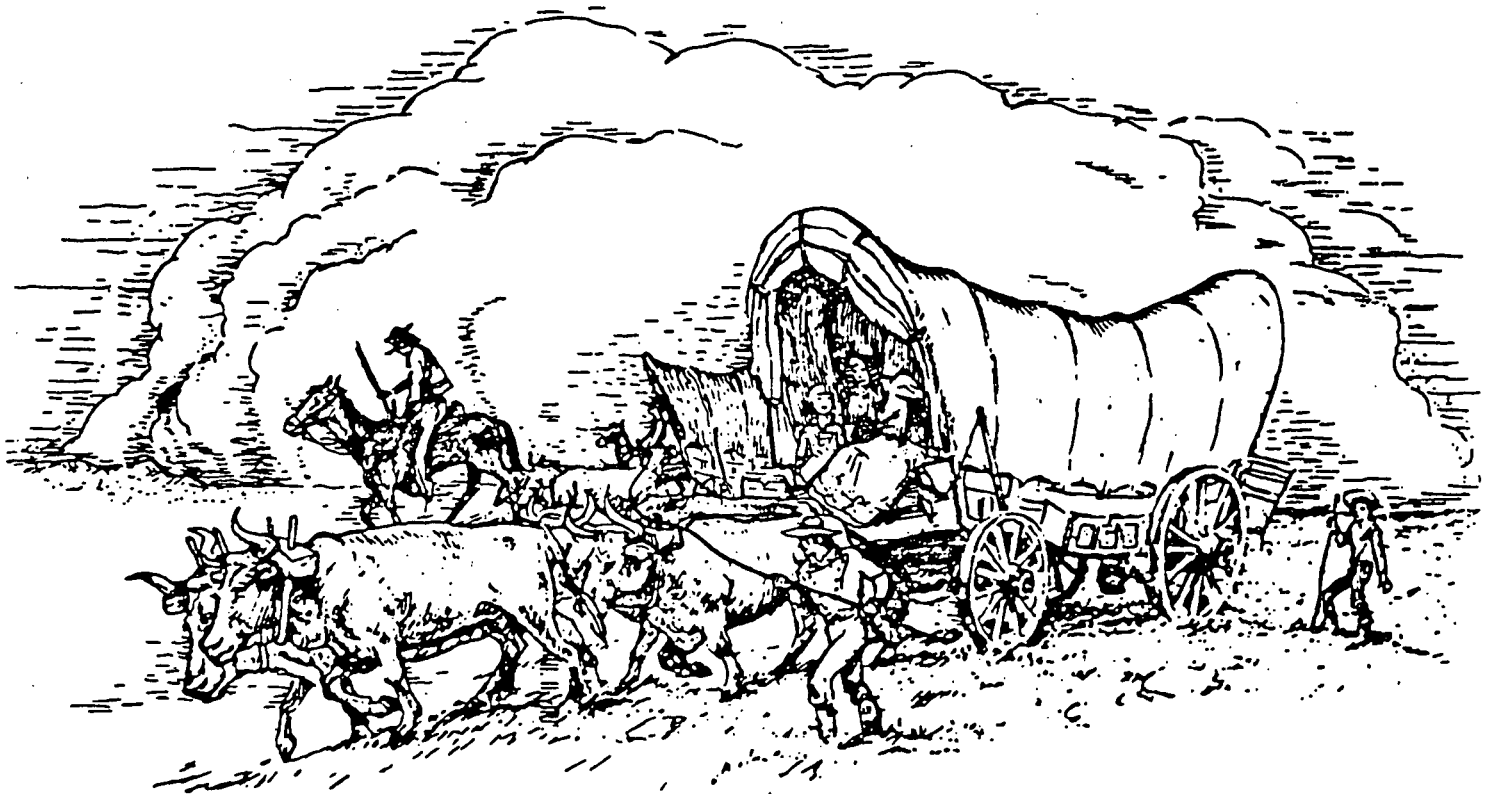
Pioneer
Vol. 22, No. 1 & 2
Jan-April 2000

*Note: Paul had new master made + copies
33 pg X 5¢ @ 1485 per copy @ 29¢ at copyco.

Pioneer Vol. 22 No 1 + 2 Jan-April 2000

Volume 22, nos. 1-2
January-April 2000

THE PIONEER



Published Quarterly By:

Douglas County Genealogical Society

P.O. BOX 3664

LAWRENCE, KS 66046-0664

DOUGLAS COUNTY GENEALOGICAL SOCIETY, INC.

P.O. Box 3664
Lawrence, KS 66046-0664

Administrative Committee and Jobs Assumed

Jackie Kennedy	Treasurer
Patti Garrett	Programs
Beverley Chapman	Publications
Carol Albertson	Membership
Shelley Hickman Clark	Abstracts
Chuck and Erma Worley	Librarians
Don and Wilma Vaughn	Web Page
Paul Jordan	Genealogist

Pioneer

Mary Burchill	Editor
Iona Spencer	Typist
J. Bunker Clark	Layout and Typesetting

The Douglas County Genealogical Society is a non-profit organization. Meetings are held at intervals and announced in the *Lawrence Journal World*. Membership fees are \$15 single, \$2 for each additional member of the same household. Checks should be made payable to the Douglas County, Kansas, Genealogical Society (DCGS) and sent to the address above. The fiscal and membership year is from January 1 to December 31. Visitors are always welcome at the meetings.

The Douglas County Genealogical Society Library is located in the Helen Osma Room on the lower level of the Lawrence Public Library, 707 Vermont, Lawrence. Hours are Monday through Friday, 9:30am-9pm; Saturday, 9:30am-6pm; and Sunday, 2-6pm. Anyone may use the library, but items may not be checked out. Microfilm readers are available in the Osma Room.

**Volume 22, nos. 1-2
January-April 2000**

THE PIONEER

PUBLISHED QUARTERLY BY
THE DOUGLAS COUNTY, KANSAS, GENEALOGICAL SOCIETY, INC.
P. O. Box 3664
Lawrence, Kansas 66046-0664

Volume 22, nos. 1-2

January-April 2000

CONTENTS

"Don't Let This Happen to You" ..	2
Upcoming Events	3
News Items from the Web	3
Genealogical Books and Scrapbooks Donated to the Society by Kathryn J. Bunton	5
How to Research Your Medical Family Tree	10
"From Unbroken Sod to Paved Roads," by Mrs. Howard Henry	13
Pedigree Chart of Janice (Jan) Sackrider	15
Directory of Douglas County Public Schools, 1935-1936	16
"Being Creative with Troublesome Kin"	24
Dues Form for 2000	24
Index	25

* * *

The Pioneer welcomes articles and records for publication that are relevant to Douglas County family history, with the exception of published and copyrighted material. It is not necessary that articles be camera-ready, but if you are typing for that purpose, be sure to leave enough margin space for binding. Send submissions to the *Pioneer* editor at the address above, or submit to one of the Administrative committee. If you can give us the articles on disk we would appreciate it.

Address corrections: If your *Pioneer* is returned to us by the post office for incorrect address, and you have not filed an address correction with the Society, the *Pioneer* will be remailed to you only upon receipt of \$4 to cover post office charges to us.

UPCOMING EVENTS

On **Saturday, March 25th**, there will be a workshop on Writing Life History presented by **Charley Kempthorne** at the Lawrence Public Library. It will be sponsored by the Kansas Authors Club and the Douglas County Genealogical Society. It will be from 9:30am to 4:30pm, with an hour from 12 to 1 for lunch on your own. Enrollment is first come, and the fee is \$45. The auditorium will seat 100 people, so enroll early. There will be application information in the Osma Room and from the Kansas Authors Club.

Charley Kempthorne has been teaching people how to write about their lives since 1976, when he started the first "reminiscence workshop" in the nation. Like many students in his workshops, he has been a writer all of his life, keeping a diary as a child and using his earnings from farm work to buy a typewriter at the age of 11. He painted the keys of the typewriter with luminous paint so that he could write after his parents said lights out. (It didn't work.)

Charley has degrees in writing and history from the University of Kansas, as well as an M.F.A. from the famed Iowa Writer's Workshop at the University of Iowa. A former college professor, farmer, and painting contractor, in 1991 he founded the LifeStory Institute and, with his wife, *LifeStory Magazine*, which he has edited ever since.

June Fritz Kempthorne grew up on a Kansas farm. In college she won prizes for her art, exhibited in several national shows and won the Governor's Prize at Kansas State University, where she took a B.F.A. in printmaking in 1972. For many years she owned and operated a paperhanging and painting business. Co-founder with her husband, Charley, of *LifeStory Magazine*, she is now the art director and publisher. June assists in the workshops in many capacities, and presents a segment on how to lay out and design one's writing and photographs for publication. Together she and her husband have presented workshops in more than twenty states and Canada.

There is a complete file of *LifeStory Magazine* in the Osma Room, donated by Gene Bovee.

Barb Seiwald, who works at the Douglas County Title Company, will speak to us about "Abstracts of Douglas County," on **Saturday, May 6**, at the Lawrence Public Library. She has been instrumental in getting many Douglas County abstracts to the Society. She has used these abstracts to further her genealogical research and will share a lot of this information with us.

SOME NEWS ITEMS FROM THE WEB

These items come from Ancestry Weekly Digest, accessed at <http://www.ancestry.com>.

Save 2000 Census information for future genealogists.

Don't make your descendants wait seventy-two years to see your 2000 census information. Photocopy the form before you mail it back and place the copy in your genealogy files. —Jim Guth.

Misspellings.

When ordering a vital record (birth, death, marriage, etc.), it is always important to list any

possible variations in the spelling of the surname that you would like them to check. I recently ordered a death record for my great grandfather, William Henry Hortman, who died in 1920. I was quite disappointed when a letter came back saying no record was found, although I knew the specific date and place where he died. Someone urged me to try different combinations of his name. I knew that I had seen Hortman misspelled as Hartman on some documents, so called the records office back and asked them to check it as Hartman. Bingo! Although the name on the death record itself was spelled correctly, the index had it misspelled as Hartman. The clerk explained that she had checked various spellings on the reel of microfilm where Hortman was listed, but Hartman was on another roll and she would never have thought to check it if I hadn't requested it. —Judy Reed.

Adding biographical text.

Recently I decided to put all my family tree information into narrative form so that it would be easy to understand for my non-genealogist relatives. I printed a five-generation chart and then, going numerically, wrote a short narration for each person on the chart. I included source information right in the text, writing the census information exactly as the family was listed. I intended on making this easy for my family to understand, but it has benefited me immensely. Instead of looking through separate files for birth, marriage, wills, etc., I can simply look at my narrative and it is all there together. I included where I had looked and whether or not there were records found. This project has made it very easy to see if I have overlooked certain search options for that individual. I have saved the information on my hard drive and on a disk, and so updating the narrative will be easy. I wish I had done this a long time ago. —Brenda.

Census page copies pay off.

When doing census work, be sure to copy the whole page and not just abstract your family. I did just that the other day and it paid off. When I got home I was looking through the Ancestral File and found the family along with a listing of brothers and sisters of the gentleman I was looking for. I got out my copied census and who was two houses away? None other than his married sister. I got two families with one push of the copy button. —Janet Newell

Rootsweb Review and Missing Links

Myra Vanderpool Gormley and Julia Case are the creators of these "e-zines." Free subscriptions to these two weekly genealogy e-zines are available to interested Family History researchers. Send your "subscribe" message via e-mail to <rootsweb-review-L-request@rootsweb.com> and <missing-links-L-request@rootsweb.com>. (Reprinted from *Heart Lines*, no. 131 (Jan/Feb 2000), published by the Heart of America Genealogical Society of Kansas City, MO.)

GENEALOGICAL BOOKS AND SCRAPBOOKS FROM KATHRYN BUNTON

Beulah Alice Keilman Ricketts (1887-1973) compiled over many years ten bound scrapbooks concerning genealogy. Her daughter, Kathryn Jeanette Bunton, Lawrence resident (born here in 1912) and longtime member of the Douglas County Genealogical Society, indexed the contents and has recently presented them to the Society for its collection in the Lawrence Public Library. Here are the general subjects, by volume. Beulah's family, in part, begins in the U.S. with the immigration of George Bunker to New England about 1650. The family then settled on Nantucket Island. A prominent relative was Dr. Alice Bunker Stockham (1833-1912), the fifth American woman to earn a M.D. degree, whose brother David Bunker (1830-1905) moved to Lawrence in 1890 to be an instructor at Haskell Indian Institute. David's son Charles Dean Bunker (1870-1948) began working for KU's Natural History Museum in 1895, and his ashes are scattered outside the museum; his grandson Charles Harry ("Chuck") Warner is president of the Lawrence's Mercantile Bank. Another cousin of Kathryn is Thomas Beisecker, professor of communication studies at KU. These volumes contain miscellaneous clippings about Nantucket and other places of the family's roots, but also excerpts of the genealogy professionally prepared in New York by the Lewis Historical Publishing Co. in the early 1930s.

1 - Guillaume Bon Court / William Bunker / George Bunker / William Bunker / Benjamin Bunker / Obed Bunker / Job Bunker / Isaac Bunker / Slocum Hussey Bunker / David Bunker / Jane Bunker (wife of William C. Hicks) / Alice Bunker (wife of Henry Stockham) / Susan Jane Spencer (wife of David Bunker) / Louis Arthur Bunker / Marjorie Bunker (wife of Ernest Newlin) / Ruth Newlin (wife of Howard Wenrick) / Caroline Elizabeth Bunker (wife of Jacob Keilman)

2 - Earl David Keilman / Lucy Jane Keilman (wife of Lester Beisecker) / Thomas David Beisecker / Bonnie and Beth Beisecker / Beulah Keilman (wife of Hugh Bunton, then Earl C. Ricketts) / Hugh Bunton Jr. family / Ricketts family / Rachel Bunker Dean and Dean family / Slocum Hussey Bunker / Alice Bunker (wife of Dr. G. H. Stockham)

3 - Mosher family / Lewis family / Deborah Paddock family / Richard Sears / Anthony Thacher / Henry Palmer family / Benjamin White family / John Wood / Matilda Wood Bunker / Samuel Wood / Mary Dyer / James Brennan / Stephen Wood of Elmdale, KS / Jethro Wood / William Chase

4 - Henry Sherman / Roger Sherman / John Tripp / Dolar Davis / Robert E. Perry / Edmond Freeman / Mary Bunker (wife of George Wills) / Thomas Savage / Ralph Earle / Hussey family of England / John Hussey / Sarah Hussey / Erastus Hussey / John Brown / Thomas Gardner / Edmund Hobart / Joseph Grafton / Tristram Coffin of Nantucket / Nicholas Coffin of England / Lucreta Coffin Mott

5 - Edward Starbuck / Henry Tibbits / John Greenleaf Whittier / original Quaker hearse / Old North burying ground / "Nantucket," by Hazel Young / "The Land of Long Ago" / Capt. James Grant / Whaling off California Coast / Pitcairn Island / Macy Line / Steven Foster / Coffin Line / Town of Sandwich, Mass. / Barnstable County, Mass. / Egbert, first king of England / 138 generations from Adam / Book of Adam

6 - Should you have a family tree? / Big ancestor hunt / Historic regions / A century-old budget / Nantucket Historical Society / Old Nantucket sayings / Descendants of Kezia Coffin / Migrations of Nantucketers to south and west / Lydia Pinkham / Small stories of interest / Cancer of colonial days / The spirit of '76 / Tragedy on Nantucket / Cape Cod / "Charley Weaver" / Quantrill / Great seal of the United States / Betsy Ross / Our flag / Benjamin Franklin

7 - Clara T. Woody letters / Douglas Stockham letters / Franklin Fogler family letters / Hobby story by Beulah Ricketts / Seth Colman / Founders of America & Revolutionary service chart of ancestors / Carry Nation / Ricketts family / Ruth Lindenberger / Col. Robert Bruce Ricketts

8 - Keilman family / Upper Bucks County / Winnie Keilman / William Keilman / New Hope, Pa. / Jacob Keilman / Brattleborough, Vt. / Spring Valley, Ill. / Beulah and Earl Keilman / Julia Moore / Hugh Bunton Jr. / Kathryn Bunton / Blanche Keilman / Lloyd Bunker / "The 1905 Windmill" / Dorothy Treiheller / Beisecker family / Jonathan Hussey / Pioneer women of Kansas / Memorial and historic markets of Kansas / Julia Webber letters / Beulah Ricketts / Al Capp / Dr. H. T. Jones / Dr. H. P. Jones / Ellsworth Bunker / August E. Keilman / Edward Moran

9 - David Bunker / Julia Oliver Bunker / H. L. Bunker / Maude Phillips / D.A.C. / David Bunker letters / Noah White / John Wing / Edward Stackpole / Harry S. Bunker / John Bunker Clark / Shroud of Turin

10 - Blanche Keilman / Clara Woody / Bunker family from Nantucket to Kansas / Beulah Ricketts / White family / Crosby family / A. B. Humphrey / Kathryn Bunton / Daphne Rhodes / A. H. Bunker / Ellsworth Bunker / Stonage / Col. Sam N. Wood

copied by J. Bunker Clark
October 1998

Kathryn Bunton also gave to the Society her collection of genealogy books, as follows:

Genealogical Books Donated to the Douglas County (Kansas) Genealogical Society
by Kathryn J. Bunton
November 1999

- Adams, Arthur, and Frederick Lewis Weis. *The Magna Charta Sureties, 1215: The Barons Names in the Magna Charta, 1215, and Some of Their Descendants Who Settled in America, 1607-1650*. 2nd ed., rev. Walter Lee Sheppard, Jr. Boston, 1955; reprint, Baltimore: Genealogical Publishing Co., 1964.
- Austin, John D. *Stephen Hopkins of the Mayflower and His Descendants for Four Generations*. N.p.: General Society of Mayflower Descendants, 1988; reprinted 1989.
- Banks, Charles Edward. *The Winthrop Fleet of 1630: An Account of the Vessels, the Voyage, the Passengers and Their English Homes from Original Authorities*. Boston, 1930; reprint, Baltimore: Genealogical Publishing Co., 1976.
- Barber, Rev. Henry. *British Family Names: Their Origin and Meaning, with Lists of Scandinavian, Frisian, Anglo-Saxon and Norman Names*. 2nd ed., enl. London, 1903; reprint, Baltimore: Genealogical Publishing Co., 1968.

- Begley, Donal F. *The Ancestor Trail in Ireland: A Companion Guide*. Booklet, Dublin: Heraldic Artists, 1982.
- Birch, Walter de Gray. *Domesday Book: A Popular Account of the Exchquer Manuscript So Called, with Notices of the Principal Points of General Interest Which It Contains*. London: Society for Promoting Christian Knowledge; New York: E. & J. B. Young & Co., 1887.
- Bolton, Charles Knowles. *Scotch Irish Pioneers in Ulster and America*. Boston, 1910; reprint, Baltimore: Genealogical Publishing Co., 1981.
- Boyer, Carl, 3rd, comp. *Ancestral Lines Revised: 190 Families in England, Wales, Germany, New England, New York, New Jersey and Pennsylvania*. Newhall, CA: author, 1981.
- Bradney, Joseph Alfred, transcr. and ed. *Registra antiqua de Llantilio Crossenny et Penrhos in Comitatu Monumethensi, 1577-1644* [at Bodleian Library, Oxford]. London: Mitchell Hughes and Clarke, 1916.
- Burke, Arthur Meredyth. *Key to the Ancient Parish Registers of England & Wales*. London, 1908; reprint, Baltimore: Genealogical Publishing Co., 1962.
- Camp, Anthony J. *Tracing Your Ancestors*. London: W. & G. Foyle, 1964.
- Clark, Arthur. Foreword by C. Gordon Jolliffe. *Chepstow: Its Castle and Lordship*. [Chepstow]: Newport & Monmouthshire Branch of the Historical Association, n.d.
- Coldham, Peter Wilson. *English Estates of American Colonists: American Wills and Administrations in the Prerogative Court of Canterbury, 1700-1799*. Baltimore: Genealogical Publishing Co., 1980.
- Davis, George Arthur, comp. *Davis and Fifty Allied Colonial Families of New England*. N.p.: n.p., 1956.
- Davis, Horace. *Dolor Davis: A Sketch of His Life, with a Record of His Earlier Descendants*. Cambridge, MA: Riverside Press, 1881; reprint, Ann Arbor: University Microfilms International.
- Davis, William W. H. *A Genealogical and Personal History of Bucks County, Pennsylvania*. 2nd ed., ed. Warren S. Ely and John W. Jordan. New York and Chicago: Lewis Publishing Co., 1905; reprint, Baltimore: Genealogical Publishing Co., 1975.
- Delderfield, Eric R., ed., with D. V. Cook. *Kings and Queens of England*. [New York]: Stein and Day, 1972; New York: Weathervane Books, 1978.
- Dicker, J. J. *Life in Hewelsfield and Brockweir during the 16th Century*. Foreword by C. Gordon Jolliffe. Chepstow: Newport & Monmouthshire Branch of the Historical Association & Shepstow Society, 1950.
- Dunlop, Jean. *The Scotts. Johnston's Clan Histories*. Edinburgh and London: Johnston & Bacon, 1957; reprinted 1971.
- Falley, Margaret Dickson. *Irish and Scotch-Irish Ancestral Research: A Guide to the Genealogical Records, Methods and Sources in Ireland*. Vol. 1: *Repositories and Records*. Evanston, IL: author, 1962.
- Gardner, David E., and Frank Smith. *Genealogical Research in England and Wales*. Vol. 1. Salt Lake City: Bookcraft Publishers, 1956.
- Gardner, Will. *The Coffin Saga: Nantucket's Story—from Settlement to Summer Visitors*. Nantucket Island, MA: Whaling Museum/Cambridge: Riverside Press, 1949.
- Gardner, Will. *The Triumphant Captain John and Gardners and Gardiners: Twelve Founders of Families*. Nantucket Island, MA: Whaling Museum/Cambridge: Riverside Press, 1958.
- Gébler, Ernest. *The Plymouth Adventure: A Chronicle Novel of the Voyage of the Mayflower*. Garden City, NY: Doubleday & Co., 1950.

- Gibson, J. S. W., comp. *A Simplified Guide to Bishops' Transcripts and Marriage Licenses: Their Location and Indexes in England, Wales, and Ireland*. 2nd ed. England, 1981; reprint, Baltimore: Genealogical Publishing Co., 1982.
- Gibson, J. S. W., comp. *A Simplified Guide to Probate Jurisdictions: Where to Look for Wills in Great Britain and Ireland*. 2nd ed. England, 1980; reprint, Baltimore: Genealogical Publishing Co., 1982.
- Gleanings from English Records about New England Families*. Salem: Salem Press, 1880.
- Hackett, J. Dominick, and Charles Montague Early. *Passenger Lists from Ireland*. Excerpted from *Journal of the American Irish Historical Society*, vols. 28-29. Baltimore: Genealogical Publishing Co., 1965.
- Hills, Leon Clark. *History and Genealogy of the Mayflower Planters and First Comers to Ye Olde Colonie*. Cape Cod Series, vol. 1. Washington, 1936, 1941; reprint, Baltimore: Genealogical Publishing Co., 1977.
- Hutton, Mary Louise Marshall, comp. *Seventeenth Century Colonial Ancestors of Members of the National Society Colonial Dames XVII Century, 1915-1975*. 1976; reprint, Baltimore: Genealogical Publishing Co., 1983.
- Johnson, Curtiss S. *The Indomitable R[owland] H[ussey] Macy*. New York: Vantage Press, 1964.
- Lawton, Mrs. James M. *Family Names of Huguenot Refugees to America*. Baltimore: Genealogical Publishing Co., 1963.
- Leynse, James P. *Preceding the Mayflower: The Pilgrims in England and in the Netherlands*. Introduction by Frances Diane Robotti. New York: Fountainhead Publishers, 1972.
- Loyd, Lewis C. *The Origins of Some Anglo-Norman Families*. Ed. Charles Travis Clay and David C. Douglas. Leeds, 1951; reprint, Baltimore: Genealogical Publishing Co., 1975, 1980.
- MacLysaght, Edward. *A Guide to Irish Surnames*. Dublin: Helicon, 1964; reprint, Baltimore: Genealogical Book Co., n.d.
- Magee, Peggy. *Directory of Family Research*. Prescott, AZ: Magee Publications, 1982.
- Martin, John Patrick. *The Story of Dartmouth*. Dartmouth, Nova Scotia: author, 1957. Signed to Mrs. E. C. Ricketts by author, 9 May 1962.
- Mathews, Anthony. *Origin of the O'Neills, with a History of the Septs*. Dublin: author, 1971.
- Mayflower Families Through Five Generations: Descendants of the Pilgrims Who Landed at Plymouth, Mass. December 1620*. Vol. 1: Francis Eaton family, Samuel Fuller family, William White family; vol. 3: George Soule family. Plymouth, MA: General Society of Mayflower Descendants, 1975-80.
- Mayflower Quarterly: A Journal of Pilgrim History and Genealogy in Colonial New England*. Vol. 54, no. 4 (November 1988); vol. 55, no. 1 (February 1989).
- Meehan, Rev. C. P. *The Fate and Fortunes of Hugh O'Neill, Earl of Tyrone, and Rory O'Donel, Earl of Tyrconnel: Their Flight from Ireland, and Death in Exile*. 2nd ed. Dublin: James Duffy, 1870.
- Morrison, N. Brysson. *Mary Queen of Scots*. New York: Vanguard Press, 1960.
- Neagles, James C. and Lila Lee. *Locating Your Immigrant Ancestor: A Guide to Naturalization Records*. Logan, UT: Everton Publishers, 1975.
- New England Historical and Genealogical Register*, July 1916.
- Noyes, Sybil, Charles Thornton Libby, and Walter Goodwin Davis. *Genealogical Dictionary of Maine and New Hampshire*. Portland, ME, 1928-39; reprint, Baltimore: Genealogical Publishing Co., 1972, 1983.

- O'Duirnin, Ulliam/William P. Durning. *If You're a Wee Bit Irish: A Guide to Family Relationships as Collected from the Oral Tradition*. La Mesa, CA: Irish Family Names Society, 1978; 4th printing, 1982.
- Pennsylvania Line: A Research Guide to Pennsylvania Genealogy and Local History*. 3rd ed. Laughlinton, PA: Southwest Pennsylvania Genealogical Services, 1983.
- Perry, Rev. Calbraith Bourn. *The Perrys of Rhode Island and Tales of Silver Creek: The Bosworth-Bourn-Perry Homestead*. New York: Tobias A. Wright, 1913.
- Pine, L. G. *Heraldry, Ancestry and Titles: Questions and Answers*. New York: Gramercy Publishing Co., 1965.
- Pine, L. G. *They Came with the Conqueror: A Study of the Modern Descendants of the Normans*. London: Evans Bros., 1954.
- Porter, Jane. *The Scottish Chiefs*. New York: American News Co., n.d. [1st ed. preface dates December 1809].
- Reginald de Hereford. *The History of Ruthin Castle*. Booklet, n.p., n.d.
- Scott, Kenneth, and Rosanne Conway, comps. *New York Alien Residents, 1825-1848*. Baltimore: Genealogical Publishing Co., 1978.
- Sherman, Roy V. *The New England Shermans*. [Akron, OH]: author, 1974.
- Shurtleff, Nathaniel B., ed. *Records of the Colony of New Plymouth in New England*. Boston: William White, 1857; reprint, Baltimore: Genealogical Publishing Co., 1976.
- Sims, Clifford Stanley. *The Origin and Signification of Scottish Surnames, with a Vocabulary of Christian Names*. [Tokyo]: Charles E. Tuttle, 1869; reprint, New York: Avenel Books, [1972].
- Stackpole, Edouard A. *Nantucket in the American Revolution*. Nantucket Historical Association, 1976.
- Stenton, Frank Merry. *William the Conqueror and the Rule of the Normans*. New York and London: G. P. Putnam's Sons/ Knickerbocker Press, 1908.
- Vital Records of Peru, Massachusetts, to the Year 1850*. Boston: New-England Historic Genealogical Society, 1902.
- Von Eelking, Max. *The German Allied Troops in the North American War of Independence, 1776-1783*. Trans. and abridged from the German [of 1863] by J. G. Rosengarten. Albany, NY: Joel Munsell's Sons, 1893; reprint, Bowie, MD: Heritage Books, 1987
- Waite, Frances Wise, and Terry A. McNealy, comps. *Bucks County Declarations and Naturalizations, 1802-1906*. Doylestown, PA: Bucks County Genealogical Society, 1985.
- Waters, Ivor. *About Chepstow*. Preface by C. Gordon Jolliffe. Chepstow: Newport & Monmouthshire Branch of the Historical Association & Shepstow Society, 1952.
- Waters, Ivor, comp. *A Chepstow and Tintern Anthology*. Chepstow, Mon[mouthshire County]: Chepstow Society, 1948.
- Waters, Ivor. *Chepstow Miscellany*. Foreword by C. Gordon Jolliffe. Chepstow, Mon[mouthshire County]: Chepstow Society, 1958.
- Waters, Ivor. *Chepstow Parish Records*. Preface by C. Gordon Jolliffe. Chepstow: Newport & Monmouthshire Branch of the Historical Association & Chepstow Society, 1955.
- Waters, Ivor. *The Unfortunate Valentine Morris*. Chepstow, Mon[mouthshire County]: Chepstow Society, 1964.
- Weis, Frederick Lewis. *Ancestral Roots of Sixty Colonists Who Came to New England between 1623 and 1650: The Lineage of Alfred the Great, Charlemagne, Malcolm of Scotland, Robert the Strong, and Some of Their Descendants*. 5th ed., with additions and corrections by Walter Lee Sheppard, Jr. Lancaster, MA, 1951; reprint, Baltimore: Genealogical Publishing Co., 1979.

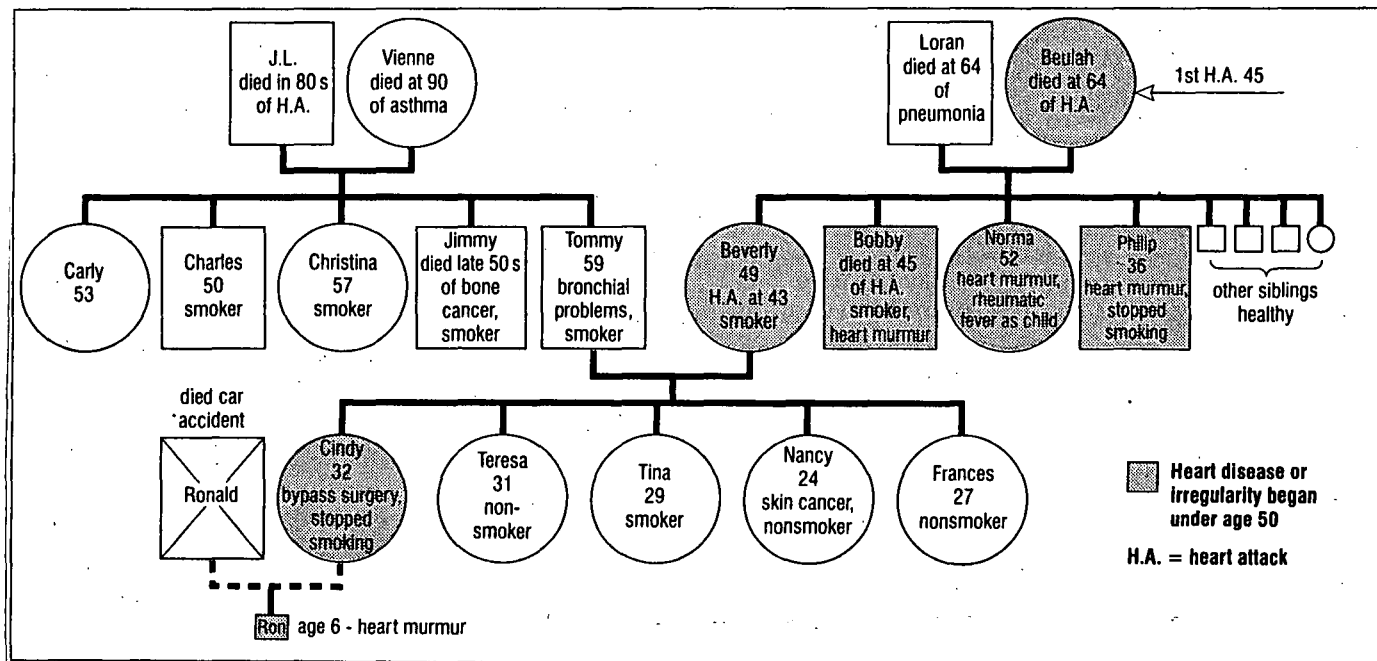
Weiss, M. Charles. *History of the French Protestant Refugees, from the Revocation of the Edict of Nantes to Our Own Day*. Trans. from the French by Henry William Herbert, with an American appendix. 2 vols. New York: Stringer & Townsend, 1854. Xerox bound copy.

White, Thomas and Samuel. *Ancestral Chronological Record of the William White Family, from 1607-8 to 1895*. Concord: Republican Press Assn., 1895; reprint, State College, Ark.: Calvin D. Gruver, n.d.

Wurts, John S. *Magna Charta*, parts 1, 2, 3, 7. Philadelphia: Brookfield Publishing Co., 1944-54.

list by J. Bunker Clark
24 November 1999

How to research *your medical family tree*



(This is an adaptation of an article from the August 1994 issue of *Good Housekeeping* by Carol Krause. She is the author of the book *How Healthy Is Your Family Tree?*.)

HOW TO RESEARCH YOUR MEDICAL FAMILY TREE

If it weren't for knowing her family's medical history, Cindy Leffew might be dead. Last year, when she was 31, Cindy felt a burning sensation from her shoulders down to her wrists. At first, she didn't pay much attention to it. But when the episodes persisted, she went to her doctor, and mentioned to him that her mother had suffered a heart attack at age 43.

Her doctor referred her to a heart specialist, who encouraged her to find out as much as she could about her family's medical history. Cindy learned (see the accompanying "tree") that her mother's brother had died of a heart attack at age 45, and her maternal grandmother had had two heart attacks, the first at age 45, and a fatal attack at 64.

Cindy's heart doctor ordered some preliminary tests, which showed little. But because of her family history of heart disease, the doctor ordered something rare for a female patient of her age—a heart catheter test. Cindy was shocked when it revealed an 80 percent blockage in one of her main arteries. She immediately underwent heart bypass surgery, which may well have saved her from a possible fatal heart attack.

Medical family trees have long been used to counsel prospective parents with family histories of hereditary childhood abnormalities, such as Down's syndrome, cystic fibrosis, hemophilia, muscular dystrophy, and sickle-cell anemia. But scientists have recently discovered that many serious adult illnesses—most notably cancer, heart disease, and diabetes—can have strong genetic links. Knowing about the health of your relative, then, could have a vital impact on you and your family's future health. Here's how you can make your own tree:

GATHERING THE FACTS

Make a list of everyone in your family, including your parents, grandparents, aunts, uncles, and cousins, as well as your children. To construct the tree, use the chart with this article as a model. Draw squares for males and circles for females. (This will help a doctor quickly identify gender-related illnesses.) In each square or circle, enter these simple facts: major illnesses, age at onset of illness, and both cause of and age at death. To find this information:

1. Ask older relatives to tell you about deceased family members.
2. Save medical records. It is helpful to have as many details as possible about a relative's illness. For example, if someone died of a heart attack, did he or she have high cholesterol (a condition that can be hereditary), high blood pressure, a heart defect? Did he or she smoke?
3. Collect death certificates of family members as far back as great-grandparents, if possible. They often indicate the specific cause of death. If you can't find a certificate for an ancestor, and you know in which state he or she died, call or write the state capital and ask how to get a copy of the death certificate.

INTERPRETING YOUR TREE

Pay close attention to the illnesses of "first-degree" relatives (parents, siblings, children) with whom you share the most genes. But if you see a pattern of an illness among any relatives, ask your family doctor to refer you to a specialist in that disease. You should take quick action

if you see the following information on your family tree:

1. Two first-degree relatives with the same or similar cancers. (Note: Breast, uterine, ovarian, and colon cancers can be genetically related.)
2. One first-degree relative with heart disease, life threatening diabetes, or cancer that was diagnosed before he or she was 50. Early onset of an illness can signal a genetic link.

USING WHAT YOU KNOW

If you learn you are at risk for a certain disease, you can immediately make nutritional and life-style changes. For instance, if you discover you may have a genetic predisposition to hardening of the arteries (arteriosclerosis), that may be the incentive you need to stop smoking. If you seem to be at risk for colon cancer, you might be encouraged to switch to a low-fat, high-fiber diet and to schedule periodic colon tests. If breast cancer is common in your family, you may be more diligent about doing monthly breast self-exams and scheduling yearly mammograms.

But the benefits of knowing your family's genetic probabilities go far beyond the traditional advice about life-style and nutrition changes and regular screenings. People at high risk for certain diseases may be advised to undergo preventive surgery to give them peace of mind (such as removal of ovaries for women at high risk of ovarian cancer).

IN THE FUTURE

You can also get a jump start on an even more startling approach to health care. In the next few years, gene therapy will take astonishing leaps and bounds in three ways:

1. *In the embryo.* Already, a handful of couples who carry genes for either cystic fibrosis or Tay-Sachs disease have given birth to healthy babies using a new technique that includes in vitro fertilization. When the embryos (fertilized in a test tube) are only four or eight cells large, they are checked for the defective gene. Only those embryos that are free of the defective gene are implanted in the woman's uterus.
2. *In the ill child.* The first successful use of gene therapy occurred in September 1990 at the National Institute of Health (NIH). A four-year-old girl was ill with ADA (adenosine deaminase) deficiency, a rare disease which wipes out the immune system. (The "boy in the plastic bubble" had ADA.) NIH doctors gave the girl injections of the missing ADA gene, and four years later, she's doing fine.
3. *In ill adults.* Gene alterations have been tried, with some success, on a small number of terminally ill brain and lung cancer patients, as well as on patients with a family history of very high cholesterol.

Once deadly genes are identified, we can look for them in our blood. But we will be well into the twenty-first century before a low-cost, comprehensive test is available to the public. Until then, learning about your medical family tree may be the best way to ensure you get the tests and intervention you need.

FROM UNBROKEN SOD TO PAVED ROADS

Sees Old Pass On, Speed Eras Dawn

Otto Durow, Big Springs Blacksmith for Half a Century, Pioneer Traveler, Mineral Locator, Storehouse of Early Kansas History, Still Stands at his Flaming Forge.

By Mrs. Howard Henry

Copied from the Topeka Daily Capital-Sunday, Jan. 13, 1929:

He sharpened the plowshares that broke the sod about Big Springs. Today he repairs tractors--plows that turn over ten feet of soil at one time.

He saw the covered wagons that carried thousands of homeseekers into a new land. Today he sees thousands flit past his door in high-power motor cars or huge interstate buses, on a well-paved highway, U. S. No. 40.

Looking upward he sees an occasional airplane skimming thru the ethereal blue, and wonders at the changes time and genius have brought upon the land he helped reclaim from the wilderness that was pioneer Kansas.

Otto Durow, of Big Springs, Douglas county, is near the 80-year mark. He settled in the community where he has made his home all these years, when there was nothing but a trail. Big Springs was one of the stopping places on the Old Oregon Trail.

Dwindles Away, Comes Back.

It became quite a place with hotels, parks, stores, saloons and other accouterments of frontier towns. Then it dwindled away somewhat, but just now is coming back into its own. The postoffice was taken away, and citizens are trying to get it back. The telephone exchange was moved away, and now Big Springs is large enough to support another.

Mr. and Mrs. Durow recently celebrated their 50th wedding anniversary. They have lived all their married lives in the same house, one of the first erected in Kansas territory. They saw the covered wagon caravans streaming over the naked prairie. They saw the border ruffians come and go, in their places coming solid citizenry that has made the Big Springs community one of the finest and most prosperous in the state.

Railroads Chose Lower Paths.

The railroad passed them by, choosing the easier going along the Kaw river, three miles to the north. Big Springs is located on the high divide between the Kaw and Wakarusa watershed. U. S. No. 40 follows this divide thru its entire length, from Topeka to Lawrence, passing directly thru Big

Spring.

Being the only blacksmith, pioneer travelers beat a path to Durow's shop door. Of them he heard the latest gossip, news of Indian massacres further west, latest political happenings in the East, and all the trail news worth relating. Big Springs was the watering and camping places and several large springs furnished an abundance of fine water.

Durow can show curious persons the location of the old Pickens hotel and barroom where the first temperance crusade in Kansas began. Barrels of whisky were rolled out into the street and burned.

Points to Noted Landmarks.

He also can point out fragmentary portions of foundations of early buildings, when Big Springs was quite a little city. Where the city park, with water piped from the springs, furnished trysting place for youthful lovers; where old churches flourished and passed into oblivion; where the old Harper House, another noted hostelry, stood just east of the first United Brethren church in Kansas, with the latter's foundation stones crumbling into dust; traces of the old Oregon and California roads; the exact location of the old log cabin where two girls sold liquor in successful defiance of the temperance adherents; the foundation of the first legislative hall in Kansas; the building where the famous "rump legislature" held its session; the approximate location of the hiding place of a pot of gold, hidden by a scared emigrant on his way to California.

All of these and more can Otto Durow show to those who seek his home in search of historical data. For he is a gold mine of information on things pertaining to early Kansas history. For all his years he is remarkably active, mentally and physically. But he and Mrs. Durow enjoy the best of health, living in their original home built of solid walnut lumber to endure for ages.

When News Spread Slowly.

In the early days, Big Springs received its mail by star route between Topeka and Lawrence. Except for the ever present travelers, news spread slowly. No newspapers reached Big Springs for years after the territory was settled. The United Brethren church burned down one week-day night. Members came in on Sunday, one bringing an organ to furnish music. They were surprised to find their house of worship in ruins. It never was rebuilt. A new one was later erected in another location. Ox teams was the favorite motive power in those days. Lumber for the Durow house, equal to any modern home, was hauled from the Kaw bluffs. Weather-boarding is one and one-half inches thick, of solid walnut.

The story of the pot of gold is vivid in Durow's memory. A train of "prairie schooners" came across the ferry at Lecompton. The train reached Big Springs just as rumors came that Indians had attacked and wiped out the settlement at Topeka, then just a small village. The wagon master and the crippled cook took a pot of gold coins and dug a hole deep in the ground near one of the many springs in the vicinity. Old settlers recall that the wagon-master and cook paid a visit to the log cabin where the two girls sold liquor. Next morning, in muddled state of mind, they went west. Some 15 years later the cook returned. He spent weeks hunting for the treasure.

But Couldn't Find His Gold.

Changed topography thru erosion mixed him up until he couldn't tell heads nor tails of the country. He didn't find the gold. Ever since Big Springs folks have hunted for the pot of gold, but with no success whatever.

Durow is somewhat of a mineralogist. He has a contrivance which he claims is 100 per cent perfect in finding oil, gas and other minerals. He calls it a "Minemeter." It is a queer looking "Dingus," composed of two copper or brass rods, fastened together at one end, with an aperture for holding a flat magnetized disc. He has a disc for each of the more common minerals. If he wants to locate gold, for instance, he inserts the disc that is attracted by gold. Then he places one of the rods in his mouth, the other held tightly by both hands. Walking over the prospect grounds, the disc dips if mineral of that particular kind is beneath.

Locates Rich Oil Fields

Mr. Durow has been given credit for locating several of the richest oil fields in Texas, Oklahoma and Kansas. He also has located minerals in Missouri, Arkansas, Arizona, Nevada, Colorado and other states.

Durow is a great traveler. He likes to hit the trails where man seldom travels. In his car he went to Grand Canyon recently. He camped at a cabin with two other men. The auto road ended five miles from the cabin. The nearest town was 50 miles away. His two companions went for provisions one day and Durow went exploring. Seeing a tunnel-like formation, he entered and started walking, looking back occasionally to make sure the opening he had entered did not escape. After about a mile he saw a light the other way. Coming out in a deep well he looked upward hundreds of feet. The only egress was back thru the tunnel. Then he got scared. What if bears or cougars made this their den? He made haste that no 80-year-old man

would make, unless frightened. But the only sign of life he saw as a starved meadow lark. No wild animals infested that territory. There was nothing to eat--but rocks. Rocks of all colors and hues.

Escapes Barely With Life.

Recently he spent a night in a hotel at Belleville, Tex. It was a new hotel, open the first time that night. About midnight Durow was awakened by the smell of smoke. He awakened his companions and escaped just as the building fell in. It was burned to the ground. Another time he ran into a flooded region, drove 48 hours without sleep in order to keep an appointment some 50 miles away. Tired" He denies that the long drive affected him in the least, despite his 80 years.

Durow can tell interesting stories of his travels and of pioneer Kansas by the hour. He is an excellent storehouse of knowledge on many subjects. Mrs. Durow enjoys life with the same zest that she did 50 years ago when she married the then young blacksmith and most important artisan in the town.

As will be noted in the accompanying pictures, they look nearly alike. This similiarity often is noticed in couples, well mated, and who are of the same mental temperament.

Community Pays Tribute

The whole community of Big Springs pays tribute to Mr. and Mrs. Durow. They are the oldest inhabitants of the place, tho several others can almost equal their record.

Often Mr. and Mrs. Durow grow reminiscent. Their young neighbors gather about and listen, wide-eyed and breathless, to the hair raising tales of actual life in a new country, with none of the modern conveniences. Or they stand at the door of the little blacksmith shop and listen to the flaming forge and the anvil chorus as the veteran smithy adds finishing touches to a piece of machinery, the like of which was not in existence 50 years ago.

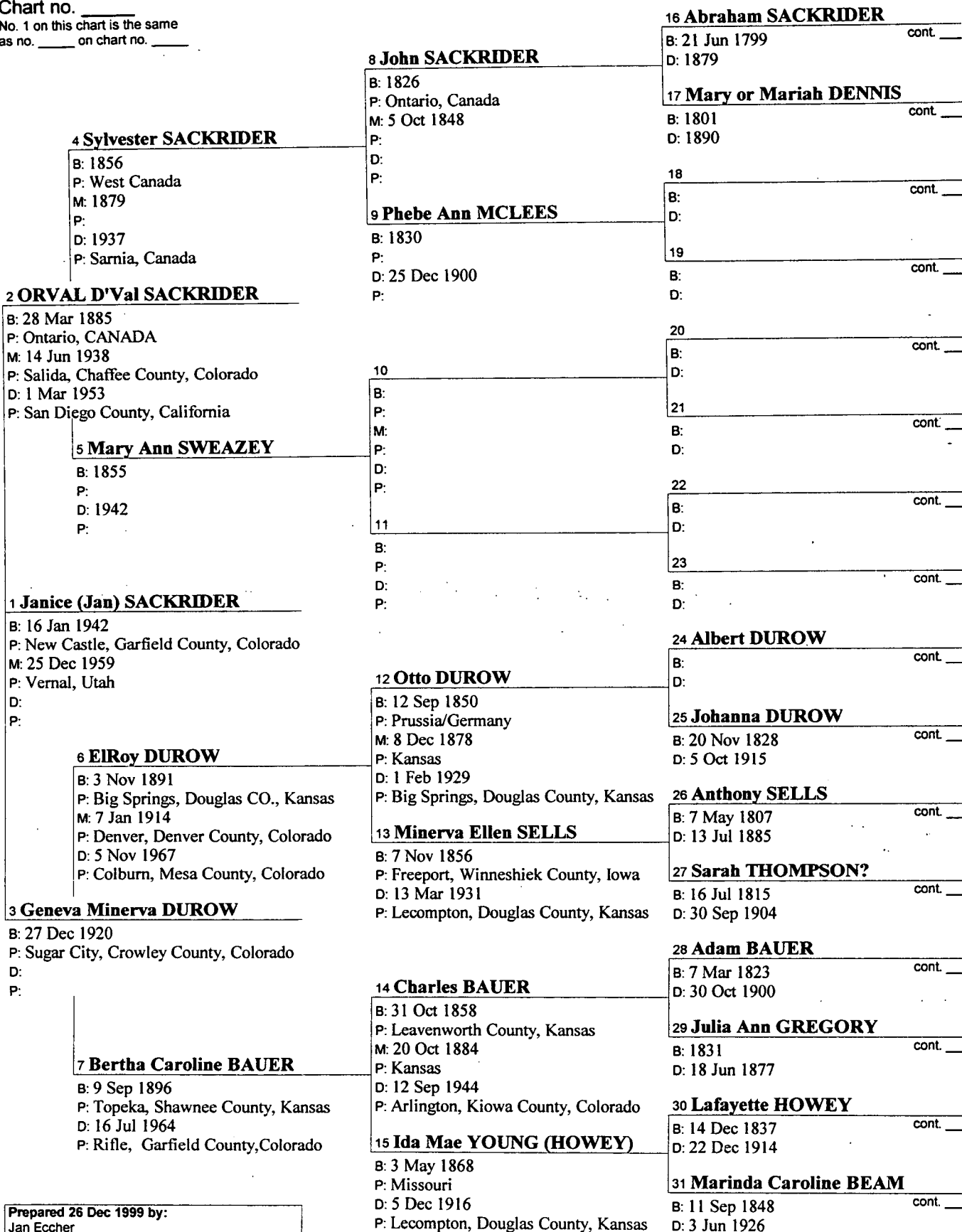
Note: The writer Mae Henry of this article was a teacher in this community. The old Durow home is still standing and liveable and is owned by one of her grandsons.

Another article on the history of Big Springs written by Wm. Franklin Spencer, also about the Big Springs Militia who fought in the Battle of the Big Blue October 22, 1864 at Westport against Sterling Price is published in the Spring 2000 issue, of the Lecompton Historial Society newsletter the Bald Eagle by Iona Spencer. It can be seen at Watkins Museum at Lawrence. More information can be had by calling 887-6637.

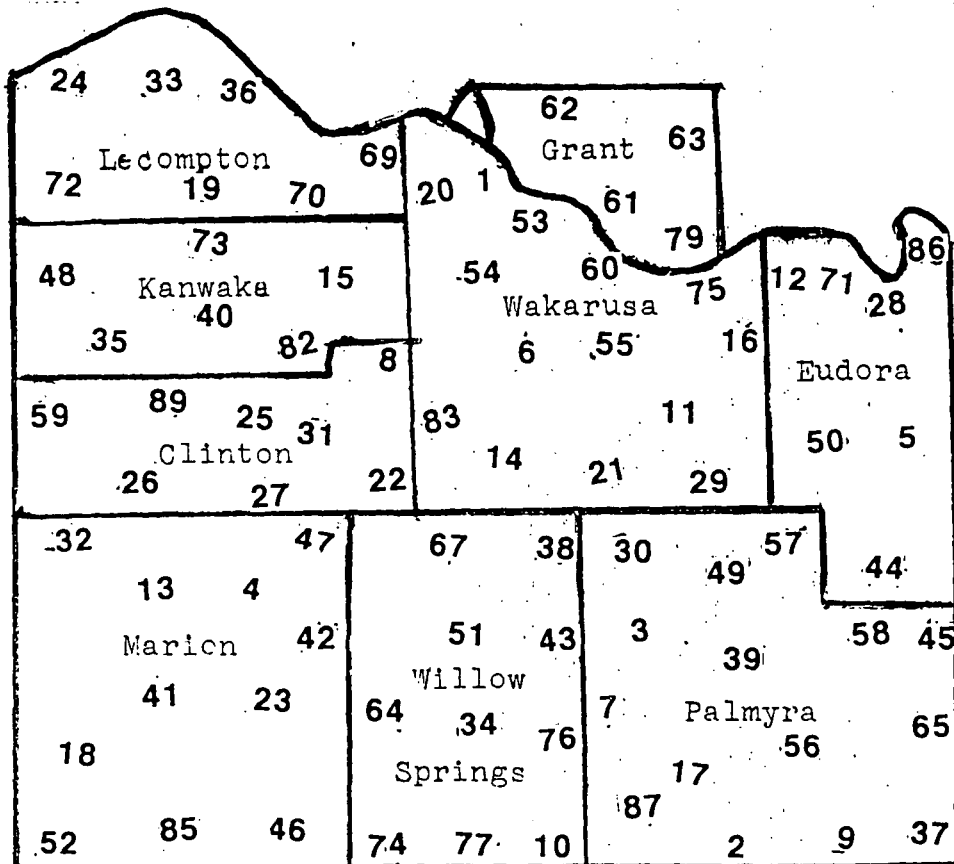
Pedigree Chart

26 Dec 1999

Chart no. _____
 No. 1 on this chart is the same
 as no. _____ on chart no. _____



DIRECTORY-DOUGLAS COUNTY PUBLIC SCHOOLS-1935-1936



Douglas County School Board Association
 President.....Francis G. Hughes
 Vice President.....Charles Banning
 Secretary-TreasurerL. G. McGee

Douglas County Teachers' Association
 President.....Mildred Brown
 Vice President Agnes Mary White
 Secretary.....Herbert Nunemaker
 Treasurer.....Wayne McMasters

Co. Board of Examiners, Harold C. Fisher, F. H. Olney, Nannie Gander
 Truant Officer.....Mrs. Rachel Flory
 Red Cross Public Health Nurse.....Matie Neeley

COUNTY OFFICERS

Treasurer.....A. M. Gardner
 Clerk.....U. S. G. Plank
 Attorney.....R. B. Stevens
 Superintendent.....Harold C. Fisher
 Sheriff.....Fred Vogler
 Clerk of District Court.....John Callahan
 Probate Judge.....L. H. Menger

Register of Deeds.....Harold Beck
 Coroner.....Dr. H. T. Jones
 Engineer.....E. E. Trueblood
 Health Officer.....Dr. H. P. Jones

COUNTY COMMISSIONERS

First District.....Chris Schaaque
 Second District.....Earl T. Black
 Third District, Chairman.....James F. Brass

MEMBERS OF THE LEGISLATURE

Senator
 Fifth District.....C. E. Friend
 Representatives
 Eleventh District.....George K. Melvin
 Twelfth District.....Carl Gerstenberger

OFFICIAL DIRECTORY

National and State, United States Officers

President, Franklin D. Roosevelt, salary \$75,000...
 New York
 Vice President, John D. Gardner, salary \$15,000...
 Texas

CABINET OFFICERS

State, Cordel Hull.....Tennessee
 Treasurer, Henry Morgenthau.....Pennsylvania
 War, George H. Dern.....Utah
 Attorney-General, Homer S. Cummings..... Con-
 necticut
 Postmaster-General, James A. Farley.....New York
 Navy, Claude A. Swanson..... Virginia
 Interior, Harold Ickes.....Illinois
 Agriculture, Henry Wallace.....Iowa
 Commerce, Daniel C. Roper.....South Carolina
 Labor, Frances Perkins.....New York
 (Salary of each, \$15,000)

SUPREME COURT OF THE UNITED STATES

Chief Justice, Charles Evans Hughes, salary
 \$20,000.....New York
 The Associate Justices are: Harlan Fisk Stone,
 New York; Benjamin N. Cordoza, New York; William
 Van Devanter, Wyoming; James Clark McReynolds,
 Tennessee; Louis D. Brandeis, Massachusetts;
 George Sutherland, Utah; Pierce Butler, Minnesota
 Owen J. Roberts.
 (Salary of each, \$20,000.)

MEMBERS OF CONGRESS

Senators

Arthur Capper.....Republican
 George McGill.....Democrat
 (Salary, \$10,000 and 20 cents Milage)

Representatives

First District, W. P. Lambertson.....Republican
 Second District, U. S. Guyer.....Reputican
 Third District, Ed. W. Patterson.....Democrat
 Fourth District, Randolph Carpenter.....Democrat
 Fifth District, John M. Houston.....Democrat
 Sixth District, Frank Carlson.....Republican
 Seventh District, C. R. Hope.....Republican
 (Salary, \$10,000 and 20 cents milage)

President of Senate.....John D. Garner
 Speaker of House.....Byrns
 (Salary, \$15,000. Ratio of Representation,
 211,877)

U. S. DISTRICT COURT JUDGES

John C. Pollock.....Salary, \$6,000.
 Richard J. Hopkins.....Salary, \$6,000.

U. S. COMMISSIONER OF EDUCATION

John Ward Studebaker.....Iowa

STATE OFFICERS

Governor, Salary, \$5,000.....Alf M. Landon
 *Lieutenant Governor, Salary, \$900..... Charles
 Thompson
 Secretary of State, Salary, \$3,000.....Frank J. Ryan
 Auditor, Salary, \$3,000.....Robb
 State Treasurer, Salary, \$3,000.....J. J. Rhodes
 Superintendent of Public Instruction, Salary
 \$3,000.....W. T. Markham
 Attorney General, Salary, \$4,000.....Clarence Beck
 Printer, Salary, \$3,000.....W. C. Austin
 Superintend of Insurance, Salary, \$3,000.....
 Chas. F. Hobbs
 Bank Commissioner, Salary, \$4,000.... R. A. Haines
 Secretary of Agriculture, Salary, \$4,000.....
 J. C. Mohler
 *Lieutenant-Governor receives \$6.00 a day extra
 during sessions of Legislature.

STATE SUPREME COURT

Chief Justice.....Rosseau A. Burch
 The Associates Justices are: Hugh Wedell, Wm.
 Easton Hutchinson, John S. Dawson, W. W.
 Harvey, Wm. A. Smith, Walter G. Thiele.
 Salary of each \$6,000.
 Clerk.....Earl E. Clark

The date below is given in the order following:
 District number, district name, district valuation (less
 intangible), mill levy; director's name and address;
 clerk's name and address; treasurer's name and
 address; Teacher's name and address; kind of
 certificate; years taught; salary and first weeks
 enrollment.

DISTRICT SCHOOLS

1. **LAKEVIEW**-\$342,962; 1.52
 Albert Brune, R. 1, Lawrence
 Owen Mitchell, R. 1, Lawrence
 Ida Hodson, R. 1, Lawrence
Hilda Jane Hunter, R. 1, Lawrence: Life; 1;
 \$60.00; 19
2. **SPRING CREEK**-\$153,820; 4.19
 Mrs. Frank Jardon, R.3, Baldwin
 A. E. Preston, R.3, Baldwin
 Claude E. Yackle, Wellsville
Mrs. Geo. Marquardt, Baldwin; 1st. Grade;
 14; \$60.00; 8
3. **STONY POINT**-\$137,351; 2.48
 H. H. Smith, R.3, Baldwin
 L. M. Craig, R.3, Baldwin
 H. E. Roe, R.1, Vinland
Marian J. Madl, R. 3, Baldwin; 3 yr. St.; 2;
 \$55; 15

4. **WEYBRIGHT** - \$137,030; 3.00
Asa M. Postma, Lone Star
Clyde B. Hoover, R. 2, Richland
Chas. Weybright, Lone Star
Herschel Hemphill, Lone Star;
2nd Grade; 3; \$62; 12
5. **HESPER** - \$321,542; 2.76
Mrs. Hazel Harris, R. 1, Eudora
Raymond Stanley, R. 1, Eudora
E. H. Grob, R. 2, Eudora
Irene Nels, R. 1, Eudora, N. Tr.; 6; \$80; 18
6. **NUMBER SIX** - \$476, 929; 2.59
Cleveland Dunnigan, R. 6, Lawrence
L. O. Armstrong, R. 6, Lawrence
W. N. Allison, R. 6, Lawrence
Johanna Griffis, 1016 Ky., Lawrence; N.
Tr.; 10; \$87.50; 24
7. **HOPEWELL** - \$300,054; 1.82
R. E. Merchant, Baldwin
Mrs. Rena Vaughn, R. 2, Baldwin
Geo. W. Reynolds, Baldwin
Frances E. Bailey, R. 2, Baldwin; 3 yr. life;
2; \$62.50; 14
8. **SIGEL** - \$268,089; 2.00
Lee Cox, R. 4, Lawrence
Geo. W. Strahan, R. 4, Lawrence
Wm. M. Johnson, R. 4, Lawrence
Eunice O'Brien, R. 4, Lawrence; Life; 8;
\$55; 16
9. **BLACK JACK** - \$222,478; 6.00
Ralph I. Kalb, Wellsville
John F. Neis, Wellsville
John L. Hays, Wellsville
Enice Hammond, Vinland; 3 yr. St.; 2; \$60;
14
10. **OAKDALE** - \$147,783; 3.92
C. W. Detwiler, R. 1, Baldwin
Jerald H. Hobson, Baldwin
Millard B. Jackson, Baldwin
Ethel E. Deay, Vinland; 3 yr. St.; 3; \$60; 6
11. **WALNUT GROVE** - \$244,479; 2.50
E. L. Brown, R. 2, Lawrence
Chas. L. Shirar, R. 2, Lawrence
Mrs. Elmo Garrett, R. 2, Lawrence
Mrs. Clarine Beyer, 712 La., Lawrence;
Life; \$60; 6
12. **KAW VALLEY** - \$369, 934; 4.36
Francis G. Hughes, R. 2, Lawrence
Eugene McCabria, R. 1, Eudora
G. E. Schaake, R. 2, Lawrence
Josephine Foster, 1645 Ala., Lawrence;
N. Tr.; 4; \$75; 9
13. **ROCK CREEK** - \$109,210; 6.00
August Schalbar, R. 2, Overbrook
Robert Pardee, R. 2, Richland
Herman B. Schellhorn, Overbrook
Leatha Dillon, R. 2, Richland; 3 yr. St.; 1;
\$50; 12
14. **PLEASANT VALLEY** - \$193,933; 3.78
T. C. Richardson, R. 6, Lawrence
E. H. Illian, R. 6, Lawrence
Vernon W. Garratt, R. 6, Lawrence
Mae Kennison, 204 W. 12th.; Lawrence;
Life; 2; \$75; 19
15. **KANWAKA** - \$260,427; 2.60
Olin Button, R. 1, Lawrence
Carl Hird, R. 1, Lawrence
Frank W. Houk, R. 2, LeCompton
Marguerite Nunemaker, R. 5, Lawrence
1st Grade; 4; \$80; 28
16. **FRANKLIN** - \$189,907; 3.46
Arthur C. Oatman, R. 2, Lawrence
J. D. Martin, R. 2, Lawrence
W. K. Eisele, Lawrence
Erma Allison 643 Ind. Lawrence; Life;
7; \$60; 24
17. **BALDWIN** - \$1,078,634; 13.33 (Bonds &
Interest 5.63)
Wilson Counts, Baldwin
Mrs. A. A. LeMaster, Baldwin
Harold Guest, Baldwin
J. W. Wellborn, Supt.; Life; 17; \$170;
Grade-151; High-101
Nannie Gander, Prin. H. S., Baldwin;
Life; 17; \$125
Ethel Watkins, Baldwin; Life; 16, \$ 120.
Frances E. Lewis, Baldwin; Life; 41/2;
\$100.
Helen Deel, Baldwin; 3 yr, Life; 3; \$105.
Hubert Jackson, Baldwin; Life; 3; \$110.
W. V. Potts, Baldwin; Life; 10; \$120.
Madge Reynolds, Baldwin; Sp. Music; 14;
\$110.
Warren W. Wilcox, Baldwin; 3 yr, 3; 5;
\$120.

- Ethel Murray**, Prin. G. S., Baldwin; 1st. Grade; 17; \$95.
Cainie W. Steele, Baldwin; El. Life; 13, \$90.
Florence H. Strong, Baldwin; Per. Jr. Hi.; 11; \$90.
Phebe B. Gates, Baldwin; 3 yr. Life; 3, \$75.
Lucy E. Gordon, Baldwin; El. Life: 9; \$90.
Jessie K. Fenton, Baldwin; Life; 12; \$90.
Arletta Brown, Baldwin; 3 yr. Life; 2; \$75
Anna E. Lewis, Baldwin; 3 yr, 3; 13; \$90.
18. **ENTERPRISE**-\$257,889; 5.50
H. N. Desque, Overbrook
George Raible, Overbrook
J. P. Murphy, Overbrook
Mary Ross, Overbrook; 3 yr. Life; 6; \$65: 14
19. **YOUNG**-\$124,378; 3.82
Frank Walter, Lecompton
Sam Dark, Jr., R. 1, Lawrence
Pete Bahnmaier, R.1, Lecompton
Jessie Norwood, Lecompton; 2nd. Grade
2; \$50. 11
20. **BARKER**- \$146, 086; 5.64
Ambrose Bigsby, R. 1, Lawrence
Barr Gorrill, R. 1, Lawrence
Grant Johnson, R. 1, Lawrence
Mrs. Ruth Sawyer, R. 1, Lawrence; Per.
El.; 4; \$65; 19
21. **FAIRVIEW**-\$373,726; 2.27
S. T. Griffin, R. 2, Lawrence
Will Walker, R. 2. Lawrence
G. W. Hungsinger, R. 6, Lawrence
Mrs. Gladys Griffiths, 1425 N. J.
Lawrence; Life; 3 \$65.; 22
22. **WASHINGTON CREEK**-\$188, 858; 3.73
Hugo Schellhorn, R. 6, Lawrence
Fred Gray, R. 6, Lawrence
O. P. McNees, R. 6, Lawrence
Mary Anderson, 1340 Vt. Lawrence, Life;
4; \$65.; 15
23. **GLOBE**- \$225,506; 4.29
Walter G. Oehrie, R. I, Overbrook
J. N. Lyon, R. 1, Overbrook
Everett Kingery, Overbrook
Katherine Brass, Overbrook; Per. El.; 4;
\$70; 14
24. **GREENWOOD VALLEY**-\$252,675; 4.13
J. W. Geelan, Lecompton
Geo. H. Simmons, R. 1, Lecompton
B. O. Kellogg, Lecompton
Louise Clarke, Lecompton, 3 yr. St.; 2
; \$75.; 15
25. **CLINTON**-\$155,134; 4.42
Harry E. Unger, R. 4, Lawrence
Fred Torneden, R. 2, Richland
Walter Kampschroeder, Richland
Edith Moses, K. U. Lawrence; 1st. Grade;
17; \$70; 29
26. **OLD BELVOIR**-\$155,056; 4.45
Otis C. Heine, R. 2, Richland
J. B. Alexander, Richland
Pearl Thurber, R. 2, Richland
Loretta Shaw, R. 2, Richland; 2nd Grade;
10; \$70. 13
27. **APPLE PIE**-\$122, 960; 5.86
Mrs. Dorothy Fishburn, Lone Star
Fred Flory, Lone Star
Elbert Goff, Lone Star
Elizabeth Dunn, R. 6, Lawrence; Life; 3;
\$55.; 18
28. **EUDORA**-\$800,167; 6.30
Oscar Lathholz, Eudora
O. E. Westerhouse, Eudora
Fred Walker, Eudora
Gilmore Nichols, Prin, Eudora; Life; 7;
\$140; 97
Mary Miller, Eudora; Life; 8 \$90.
Bessie Ehrlich, Eudora, Life; 6; \$80.
Edna Perry, Eudora; Life; 8; \$90.
29. **BLUE MOUND**-\$279,131; 1.98
Earl S. Cowles, Vinland
Oscar T. York, Vinland
A. F. Weeks, R. 2, Lawrence
Esther M. Eckman, Vinland; 2nd Grade;
3; \$65.; 17
30. **WELCOME**-\$191,269; 2.33 (Bonds &
Interest .47)
Clifford E. Cooper, Vinland
Carbon L. Penny, R. 6, Lawrence
Mrs. Maggie Pratt, Vinland
Nellie D. Perkins, R.1, Eudora:
1st Grade: 27; \$52.50: 17

31. **BLOOMINGTON**-\$116,140; 4.13
Mrs. O. A. Bradley, R.4, Lawrence
Lewis Simpson, R.4, Lawrence
Arthur Jensen, R. 4, Lawrence
Laura Lou Miller, 538, Ind., Lawrence; 3
yrd. 3: 1: \$55.; 15
32. **TWIN MOUND**-\$218,483; 3.78
George Simmons, Richland
Elmer Thurber, Richland
Geo. Sullivan, Richland
Cordella Penn, Richland; Life; 15: \$60.; 8
33. **GLENN**-\$319,890; 3.40
Starr Glenn, Lecompton
Howard Sanford, Lecompton
J. E. Matney, Lecompton
Harold Summers, Lecompton, N. Tr.;
8; \$75; 20
34. **UNION**-\$152,205; 4.40
P. K. Beck, Baldwin
Roy Schwalm, R. 1, Baldwin
Charlie Pitts, Baldwin
Mrs. F. E. Ross, Baldwin; Permanent; 11
\$60; 13
35. **MOUND**-\$161,081; 4.27
August Walter, Lecompton
D. E. Rake, R. 1, Richland
T. F. Connole, Richland
Sara R. Slavens, Lecompton; 3 yr. Life;
3; \$60.; 13
36. **LECOMPTON**-\$450,575; 8.04
Dr. C. H. Maust, Lecompton
Ralph Traxler, Lecompton
A. Hildenbrand, Lecompton
Clarence Smith, Prin. Lecompton; 1st.
Grade; 20; \$75; 75
Naomi Edwards, Lecompton; 3 yr. Life; 5
1/2; \$65.
Teresa Anderson, Lecompton; Per. Jr
. Hi.; 5; \$65.
Dorothy Porterfield, Lecompton; 3 yr.
Life; 2: \$65.
37. **VESPERTINE**-\$259,700; 2.61
Carl Hughes, Wellsville
Ralph Mignet, Wellsville
A. F. Neis, Wellsville
Eula Secrest, Edgerton; Life; 11; \$60; 11
38. **PLEASANT GROVE**-\$163,334; 5.65
Ed Deay, R.6, Lawrence
Mrs. Jack Dillon, R. 6, Lawrence
John Daggett, R. 6, Lawrence
Lois Pontius, 605 Ala. Law; Per. Jr. Hi.; 9;
\$80.; 20
39. **COAL CREEK**-\$224,829; 5.19
John Rockhold, Baldwin
Robert Randel, Baldwin
Clarence Hagerman, Vinland
Margaret Everley, Vinland; 3 yr. st.; 1;
\$45; 29
Lorene Williams, Vinland; 3 yr. St.; 1; \$45.
40. **YARNOLD**, \$188,478; 1.80
Theodore Buchheim, R. 1, Lawrence
Harry Wulfkuhle, R. 2, Lecompton
J. I. Wilson, Lecompton
Agnes Stevens, R. 1, Lawrence; Per. Jr.
Hi; 10; \$50; 18
41. **BALDWIN**-175,275; 3.41
Fred Winters, Overbrook
G. A. Fawl, Overbrook
W. A. Simon, Overbrook
Gordon Melgren, Overbrook; 3 yr. St.; 2;
\$60; 16
42. **COLYER**, \$138, 696; 1.62
Otto Hack, Baldwin
Frank E. Lutz, Lone Star
W. H. Hornberger, Lone Star
Marzella Dwyer, Lone Star; 3 yr. St.; 1;
\$50; 17
43. **HIGH PRAIRIE**-\$145,663; 2.01
E. S. Heaston, R. 2, Baldwin
Loren M. Williams, R. 5, Baldwin
D. W. Johanning, R. 2, Baldwin
Agnes Laptad, R. 3, Lawrence; 3 yr. St.;
12 1/2; \$60; 18
44. **ROSCOE**-\$248,717; 2.57
Ellen Melville, Eudora
Earnest Milburn, Eudora
Homer H. Gerstenberger, Eudora
Nora Vitt, Eudora; N. Tr.; 13; \$75; 6
45. **PLEASANT OAK**-94,095; 5.34
Philip Brecheisen, Eudora
Chas. Baecker, Edgerton

- Teddy Brecheisen, Eudora
Marcy Bunnell, Edgerton; 3 yr. St.; 1;
 \$50.; 8
46. **BRUBAKER**-\$132,019; 6.00
 Orval N. Baker, Overbrook
 Mrs. Alice Crawford, Overbrook
 H. H. Fishburn, Overbrook
Wayne McMasters, Overbrook; 1st. Grade;
 4; \$65.; 18
47. **LONE STAR**-\$178,204; 3.81
 J. D. Flory, Lone Star
 Rudolph Dietz, Lone Star
 F. J. McKinney, R. 6, Lawrence
Mabel Shaw, R. 6, Lawrence; 3 yr. 3; 12;
 \$75; 25
48. **DEER CREEK**-\$282,977; 1.99
 Albert Hildenbrand, Lecompton
 Elmer Nichols, R. 1, Lecompton
 Henry Deister, Lecompton
Carrie Hanna, Lecompton; Per. Jr. Hi.; 15;
 \$70; 34
49. **VINLAND**-\$299, 852; 2.59
 W. E. Hoskinson, Vinland
 H. W. Miskimen, Vinland
 F. W. Cleland, Vinland
Esther Hird, Vinland; 3 yr. St.; 5; \$75; 21
50. **BELLVIEW**-\$326,050; 1.97
 Claude Landon, R. 3, Eudora
 Mrs. Grace Hadl, R. 2, Lawrence
 Clifford Ulrich, R. 1, Eudora
Milton Janicke, R. 3, Lawrence; 3 yr. St.; 4;
 \$75; 27
51. **WILLOW SPRINGS**-\$136,586; 4.41
 F. A. Deay, R. 2, Baldwin
 E. E. Churchbaugh, R. 5, Baldwin
 D. F. Beeghley, R. 2, Baldwin
Olive Brown, R. 3, Baldwin; N. Tr.; 9; \$75; 19
52. **CARGY**-\$174,085; 4.16
 Mrs. Eva Rundle, Overbrook
 Lawrence Steele, Pamona
 Marion Dodder, Overbrook
Ruth Davis, Overbrook; 2nd. Grade; 4;
 \$52.50; 16
53. **RIVERSIDE**-\$406,408; 1.80
 C. A. Spray, R. 1, Lawrence
 B. L. Hills, R. 1, Lawrence
 M. G. Robertson, R. 1, Lawrence
Mrs. Mildred Wilson, 342 Johnson Ave.,
 Lawrence; Life; 14; \$80; 16
54. **BRACKETT**-\$339, 292; 2.37
 H. D. Howland, Lawrence
 Wm. H. Martin, R. 4, Lawrence
 Wilbur Jeffries, Lawrence
Mildred Brown, 1312 R. 1., Lawrence; 1st.
 Grade; 10; \$75; 18
55. **INDIA**-\$387,900; 4.65
 C. B. Hosford, Lawrence
 C. J. Knox, R. 2, Lawrence
 A. T. Hodges, R. 2, Lawrence
Emma Semple, 901 Ind., Lawrence; Per. Jr.
 Hi.; 7 1/2; \$98; .28
Margaret Fritzel, W. 23rd, Lawrence; 3 yr.
 Life; 1; \$50.
56. **PROSPECT**-\$148,437; 3.10 (Bonds &
 Interest 1.41)
 Martin Rohe, Baldwin
 J. F. Madl, R. 3, Baldwin
 Mrs. Ocia Kretsinger, Baldwin
Moleta Laughlin, R. 3, Baldwin; 3 yr. St.; 1;
 \$50; 12
57. **HARMONY**-\$177,988; 2.75
 Dale Crady, R. 1, Vinland
 H. N. Hoskinson, Vinland
 Clyde Nichols, Eudora
Mrs Argel Cochrun, R. 2, Lawrence; 2nd.
 Grade; 9; \$72.50; 16
58. **CLEARFIELD**-\$97,033; 7.50
 Wesley Deckwa, Eudora
 Dan. S. Selzer, R. 3, Baldwin
 W. W. Rodewald, Eudora
Katherine Kelley, Baldwin; 3 yr. Life; 2;
 \$62.50; 14
59. **WEST FAIRVIEW**-\$126,204; 4.68
 Albert Houk, Richland
 Dewey Benander, Richland
 H. L. Fitzpatrick, Richland
Glenn T. Colburn, R. 1, Richland; 2nd
 Grade; 8; \$55; 7

60. **CITY OF LAWRENCE**
61. **WHITE**-\$357, 110; 3.41 (Bond & Interest 1.81)
Roscoe Pine, R. 5, Lawrence
L. G. McGee, R. 3, Lawrence
E. W. Heck, R. 3, Lawrence
Agnes Mary White, 717 R. I. St. Lawrence;
Per. Jr. Hi; 9; \$95; 17
62. **BURNETTE**-\$586,236; 1.96
A. C. Schaake, R. 3, Lawrence
Robert Laptad, R. 3, Lawrence
Julian H. Boener, R. 3, Lawrence
Ann Williams, 117 E. 11th, Lawrence; N.
Tr.; 11; \$70; 26
Vivian Shields, 1637 N. H., Lawrence; 1st
Grade; 6 1/2; \$70.
63. **OAK RIDGE**-\$321,933; 2.85
H. G. Van Neste, R. 5, Lawrence
Will H. Hayden, R. 5, Lawrence
F. H. Leonhard, R. 3, Lawrence
Jennie Sowash, R. 3, Lawrence; Life; 31;
\$75; 21
64. **CENTRAL**-\$189,042; 2.76
Andrew Elm, Baldwin
J. W. Breithaupt, R. 1, Baldwin
Lucas Fleer, Baldwin
Velma Deay, Vinland; 3 yr. St.; 1; \$60; 19
65. **ADALINE**-\$95,745; 6.00
Henry Brecheisen, Eudora
Dan H. Sturm, Eudora
Herbert H. Lawrenz, Eudora
Herbert Nunemaker, Eudora; 2nd Grade;
2; \$51; 7
67. **COLUMBIA**-\$119,428; 4.89
S. J. Markley, R. 2, Baldwin
E. H. Sanders, Lone Star
Chas. Brohammer, R. 2, Baldwin
Sylvia Shuler, R. 2, Baldwin; 2nd Grade; 1;
\$50; 8
69. **CROWDER**-\$232,047; 3.12
Jack Grimes, R.1, Lawrence
L. H. Rogers, R. 2, Lecompton
J. M. Crowder, R. 1, Lawrence
Helen Norwood, Lecompton; 3 yr. St.; 5;
\$70; 16
70. **WINTER**-\$134,120; 5.27
Newt Hamlin, Lecompton
C. B. Winter, Lecompton
W. R. Colman, R. 1, Lawrence
Alice Mitchell, Lecompton; 3 yr. St.; 2;
\$55; 15
71. **FARMLAND**-\$456,371; .43
C. C. Perkins, Eudora
Ralph Davis, Eudora
J. W. Strong, Eudora
Bessie Brown, 1645 Ala. Lawrence; El.
St.; 12; \$75; 13
72. **BIG SPRINGS**-\$186,446; 4.18 (Bonds &
Interest 4.51)
C. W. Swecker, Lecompton
R. F. Buck, R. 2, Lecompton
Gus Hartman, Lecompton
Opal Shaw, R. 4, Lawrence; Life; 11; \$75;
25
73. **JONES**-\$158,777; 4.45
Samuel F. Buchheim, R. 1, Lawrence
J. F. Brass, R. 1, Lawrence
Theo. F. Walter, R1, Lawrence
Dorothy E. Williams, R. 1, Lawrence; 2nd
Grade; 1; \$45; 10
74. **RANGE LINE**-\$108,880; 3.62
John S. Watts, Baldwin
Charley Elm, R. 1, Baldwin
H. O. Gibson, Baldwin
Neoma Neis, R. 1, Baldwin; 3 yr. St.; 1; \$50
7
75. **OAK HILL**-\$317,989; 1.92
J. H. Corel, R. 2, Lawrence
R. R. McFarland, R. 2, Lawrence
W. E. Koehring, R. 2, Lawrence
No School - Pupils sent to Lawrence
76. **INDEPENDENCE**-\$170,376; 4.57
Charley H. Gale, Baldwin
B. L. Taul, R. 2, Baldwin
H. G. Seele, Baldwin
Marie Doherty, Baldwin; 1st. Grade; 6;
\$70; 16
77. **EXCELSIOR**-\$125,793; 6.00
Roy E. Shuler, R. 1, Baldwin
Glenn Flora, R. 1, Baldwin

G. Gastrock, Baldwin
Buena Vista Morgan, R. 1, Baldwin; 3 yr. 3;
 1; \$53; 26

79. **BISMARCK**-\$398,664; 2.74
 F. D. Walter, R. 5, Lawrence
 G. E. Robinsin, R. 5, Lawrence
 Elmer B. Wise, R. 5, Lawrence
Mildred Springer, 939 1/2 Mass.,
 Lawrence; Life; 10; \$75; 7
82. **BARBER**-\$130,993; 3.26
 Theodore R. Wiggins, R. 1, Lawrence
 Mrs. Chas. Coffman, R. 1, Lawrence
 R. M. Harrell, R. 1, Lawrence
Mary N. Smith, Lecompton; 3 yr. St.; 1;
 \$52.50; 11
83. **MODEL**-\$167,256; 4.73
 A. E. Holcom, R. 6, Lawrence
 C. E. Banning, R. 6, Lawrence
 Geo. Lown, R. 4, Lawrence
Frances Metcalfe, R. 5, Lawrence; 1st.
 Grade; 12; \$85; 29
84. **BELVOIR**-\$152,515; 4.67
 Harry Murphy, Richland
 M. D. Connole, R. 1, Richland
 Fred W. Lobb, R. 1, Richland
Fay Brown, R. 1, Richland; 1st. Grade; 17;
 \$70; 11
85. **CENTENNIAL**-\$170,418; 3.36
 J. H. Button, R. 1, Overbrook
 O. A. Powell, Overbrook
 C. E. Simmons, Overbrook
Everett Simmons, Overbrook; 3 yr. St.; 2;
 \$52.50; 16
86. **WEAVER**-\$285,430; 1.40
 L. L. Kindred, Eudora
 Gideon Neis, Eudora
 Floyd Broers, Eudora
Maxine Schellack, Eudora; 3 yr. St.; 2;
 \$70; 8
87. **PRAIRIE CITY**-\$330,266; 2.67
 I. N. Rutherford, Baldwin
 W. E. Simpson, R. 1, Baldwin
 Earnest Butell, Baldwin
Gertie Deay, Vinland; Per. Jr. Hi.; 9; \$80; 17

RURAL HIGH SCHOOLS

1. **VINLAND**-\$864,375; 5.00 (Bonds & Interest.
 .87)
 Roy Jameson, Vinland
 Seth Fenton, Vinland
 H. A. Cowles, Vinland
E. R. Button, Prin, Vinland; Life; 12;
 \$166.66; 48
Mrs. Gwen Janzen, Vinland; Life; 8; \$100.
Nora L. Baird, Vinland; Life; 6; \$90.
Fred Ghrist, Baldwin; 3 yr. Life; 1; \$95.
2. **EUDORA**-\$2,506,429; 4.46
 W. W. Gerstenberger, Eudora
 Dr. C. B. Johnson, Eudora
 Benjamin Neis, Eudora
John Steiner, Prin., Eudora; Life; 12;
 \$156.75; 95
Mabel Campbell, Eudora; Life; 11; \$112.92
Clifford Olander, Eudora; Life; 4; \$112.92
Beatrice Mowrey, Eudora; Life; 13; \$93.75
Paul E. Blackwood, Eudora; 3 yr. Life; \$105.
C. L. Ruthrauff, Eudora; Life; 10; \$120.42
Leota L. Wagner, Eudora; 3 yr. Life; 3;
 \$93.75
3. **OVERBROOK JOINT RURAL HIGH
 SCHOOL**
4. **LECOMPTON**-\$1,623,333; 2.21 (Bonds &
 Interest 1.60)
 W. C. McClanahan, Lecompton
 Rev. F. W. Bertschinger, Lecompton
 Fred H. Nace, Lecompton
V. L. Cramer, Prin, Lecompton; Life; 13;
 \$163.79
Oma Louise Bishop, Lecompton, 3 yr. Life;
 1; \$100.
Katharine Weatherby, Lecompton; Life; 5;
 \$100.
Harold J. Smith, Lecompton; Life; 6; \$100.

SUMMARY

ONE TEACHER SCHOOLS

Number teacher, 74	Average Salary, \$64.81
Enrollment, 1179	Average Enrollment per teacher, 16

TWO TEACHER SCHOOLS

Number Teacher, 6	Average Salary, \$63.00
Enrollment, 83	Average enrollment per teacher, 14

GRADED SCHOOL	
Number teachers, 16	Average salary, \$85.00
Enrollment, 323	Average enrollment per teacher 20
HIGH SCHOOLS	
Number teachers, 24	Average salary, \$116.25
Enrollment, 325	Average enrollment per teacher, 13 1/2
TOTALS	
Elementary teachers 96	Elementary enrollment 1585
High School teachers <u>24</u>	High School enrollment <u>325</u>
Total	120 1910

To the Citizens of Douglas County:
 In the interest of economy your school directory is coming to you in different form this year. I hope the saving will more than balance the perfection and convenience found in our previous booklets.

Errors are inevitable. We cordially solicit your help in correcting them.

Sincerely
 Harold C. Fisher
 County Superintendent

BEING CREATIVE WITH TROUBLESOME KIN

You are working on your family genealogy and for sake of example, let's say that your great-great uncle, Remus Starr, a fellow lacking in character, was hanged for horse stealing and train robbery in Montana in 1889.

A cousin has supplied you with the only known photograph of Remus, showing him standing on the gallows.

On the back of the picture are the words: "Remus Starr: Horse thief, sent to Montana Territorial Prison, 1885. Escaped 1887, robbed the Montana Flyer six times. Caught by Pinkerton detectives, convicted and hanged, 1889."

Pretty grim situation, right? But let's revise things a bit. We simply crop the picture, scan in an enlarged image and edit it with image processing software so that all that is seen is a head shot.

Next, we rewrite the text:

"Remus Starr was a famous cowboy in the Montana Territory. His business empire grew to include acquisition of valuable equestrian assets and intimate dealings with the Montana railroad. Beginning in 1885, he devoted several years of his life to service a government facility, finally taking leave to resume his dealings with the railroad. In 1887, he was a key player in a vital investigation run by the renowned Pinkerton Detective Agency. In 1889, Remus passed away during an important civic function held in his honor when the platform upon which he was standing collapsed."

Dues paid now will be good through December 2000. Our dues year runs from January through December.

MEMBERSHIP APPLICATION

Name _____ Maiden Name _____

Street _____ Apt. # _____ Home Phone _____

City _____ State _____ Zip _____ Work Phone _____

E-Mail address _____ Renewal New

Would you be willing to receive the Pioneer by e-mail? yes no

Surnames you are searching _____

Amount enclosed _____ (Rates: Individual \$15.00 per year, Family \$17.00 per year)

Mail to: DCGS
 PO Box 3664
 Lawrence, KS66046-0664

Make checks payable to: DCGS

Surname Index Volume 22, no.1 & 3

Adam 5,6	Brune 17	Craig 17
Alexander 19	Buchheim 20,22	Cramer 23
Allison 18	Buck 22	Crawford 21
Anderson 19,20	Bunker 5	Crosby 6
Armstrong 18	Bunnell 21	Crowder 22
Austin 6,17	Bunton 5,6	Cummings 17
	Burch 17	
Back 16	Burchill 2	Daggett 20
Baecker 20	Burke 7	Dark 19
Bahnmaier 9	Butell 23	Davis 5,7,8,21,22
Bailey 18	Butler 17	Dawson 17
Baird 23	Button 18,23	Dean 5
Baker 21	Byrns 17	Deay 18,20,21,22,23
Banks 6		Deckwa 2
Banning 16,23	Callahan 16	Deel 18
Barber 6	Camp 7	Deister 21
Bauer 15	Campbell 23	Delderfield 7
Beam 15	Capp 6	Dennis 15
Beck 17,20	Capper 17	Dern 17
Beeghley 21	Carlson 17	Desque 19
Begley 7	Carpenter 17	Detwiler 18
Beisecker 5,6	Case 4	Dicker 7
Benender 21	Chase 5	Dietz 21
Bertschinger 23	Churchbaugh 21	Dillon 18,20
Beyer 18	Clark 6,7,10,17	Dodder 21
Bigsby 19	Clarke 9	Doherty 22
Birch 7	Cleland 2	Dunlop 7
Bishop 23	Cochrun 21	Dunn 19
Black 16	Coffin 5,6	Dunnigan 18
Blackwood 23	Coffman 23	Durning 9
Boerner 22	Colburn 21	Durow 13,14,15
Bolton 7	Coldham 7	Dwyer 20
Bovee 2	Colman 6	Dyer 5
Boyer 7	Colman 22	
Bradley 20	Connole 20,23	Earle 5
Bradney 7	Conway 9	Early 8
Brandeis 17	Cook 7	Eaton 8
Brass 16,19,22	Cooper 19	Eckman 19
Brecheisen 20,21,22	Cordoza 17	Edwards 20
Breithaupt 22	Corel 22	Ehrlich 19
Brennan 5	Counts 18	Eisele 18
Broers 23	Court 5	Elm 22
Brohammer 22	Cowles 19,23	Everley 20
Brown 5,16,18,19,21, 22,23	Cox 18	
	Crady 21	Falley 7

Farley 17
Fawl 20
Fenton 19,23
Fishburn 19,21
Fisher 16,24
Fitzpatrick 21
Fleer 22
Flory 16,19,21,22
Fogler 6
Foster 5,18
Franklin 6
Freeman 5
Friend 16
Fritzel 21
Fuller 8

Gale 22
Gander 16,19
Gardner 5,7,16
Garner 17
Garratt 18
Garrett 18
Gastrock 23
Gates 19
Gebler 7
Geelan 19
Gerstenberger 16,20,23
Ghrist 23
Gibson 8,22
Glenn 20
Goff 19
Gordon 19
Gormley 4
Gorrill 19
Grafton 5
Grant 5
Gray 19
Gregory 15
Griffin 19
Griffis 18
Griffiths 19
Grimes 22
Grob 18
Gruver 10
Guest 18

Guyer 17

Hack 20
Hackett 8
Hadl 21
Hagerman 20
Haines 17
Hamlin 22
Hammond 18
Hanna 21
Harrell 23
Harris 18
Hartman 22
Harvey 17
Hayden 22
Hays 18
Heaston 20
Heck 22
Heine 19
Hemphill 18
Henry 12
Hereford 9
Hicks 5
Hildenbrand 20,21
Hills 8,21
Hird 18,21
Hobart 5
Hobbs 17
Hobson 18
Hodges 21
Hodson 17
Holcom 23
Hoover 18
Hope 17
Hopkins 6
Hopkkins 17
Hornberger 20
Hosford 21
Hoskinson 21
Houk 18,21
Houston 17
Howey 15
Howland 21
Hughes 16,17,18,20
Hull 17

Humphrey 6
Hungsinger 19
Hunter 17
Hussey 5,6
Hutchinson 17
Hutton 8

Ickes 17
Illian 18

Jackson 18
Jameson 23
Janicke 21
Janzen 23
Jardon 17
Jeffries 21
Jensen 20
Johanning 20
Johnson 8,18,19,23
Joliffe 7
Jones 6,16

Kalb 18
Kampschroeder 19
Keilman 5,6
Kelley 21
Kellogg 19
Kempthorne 2,3
Kennison 18
Kindred 23
Kingery 19
Knox 21
Koehring 22
Krause 11
Kretsinger 21

Lambertson 17
Landon 17,21
Laptad 20,22
Lathholz 19
Laughlin 2
Lawrenz 22
Lawton 8
Leffew 11
LeMaster 18

Leonhard 22
Lewis 5,18,19
Leynse 8
Libby 8
Lindenberger 6
Lobb 23
Lown 23
Loyd 8
Lutz 20
Lyon 9

MacLysaght 8
Madl 17,21
Magee 8
Markham 17
Markley 22
Marquardt 17
Martin 8,18,21
Mathews
Matney 20
Maust 20
McCabria 18
McClanahan 23
McFarland 22
McGee 16,22
McGill 17
McKinney 21
McLees 15
McMasters 16,21
McNealy 9
McNees 19
McReynolds 17
Meehan 8
Melgren 20
Melville 20
Melvin 16
Menger 16
Merchant 18
Metcalf 23
Mignet 20
Milburn 20
Miller 19,20
Miskimen 21
Mitchell 17,22
Mohler 17

Moore 6
Moran 6
Morgan 23
Morgenthau 17
Morrison 8
Moses 19
Mosher 5
Mott 5
Mowrey 23
Murphy 19,23
Murray 19

Nace 23
Nation 6
Neeley 16
Negles 8
Neis 18,20,22,23
Newell 4
Newlin 5
Nichols 19,21
Nichols 21
Norwood 19,22
Noyes 8
Nunemaker 16,18,22

Oatman 18
O'Brien 18
Oduirnin 9
Oehrle 19
Olander 23
Olney 16

Paddock 5
Palmer 5
Pardee 18
Patterson 17
Penn 20
Penny 19
Perkins 17,19,22
Perry 5,9,19
Phillips 6
Pine 9,22
Pinkham 6
Pitts 20
Plank 16

Pollock 17
Pontius 20
Porter 9
Porterfield 20
Postma 18
Potts 18
Powell 23
Pratt 19
Preston 17

Quantrill 6

Raible 19
Rake 20
Randel 20
Reed 4
Reynolds 18
Rhodes 6
Richardson 18
Ricketts 5,6
Robb 17
Robertson 21
Robinson 23
Robotti 8
Rockhold 20
Rodewald 21
Roe 17
Rogers 22
Rohe 21
Roosevelt 16
Roper 17
Ross 6,19,20
Rundle 21
Rutherford 23
Ruthrauff 23
Ryan 17

Sackrider 15
Sanders 22
Sanford 20
Savage 5
Sawyer 19
Schaake 16,18,22
Schalbar 18
Schelhorn 18

Schellack 23
Schellhorn 19
Schwalm 20
Scott 9
Secrest 20
Seele 22
Sells 15
Selzer 12
Semple 21
Shaw 19,21,22
Sheppard 6,9
Sherman 5,9
Shields 22
Shirar 18
Shuler 22
Shurtleff 9
Siewald 3
Simmons 19,20,23
Simon 20
Simpson 23
Sims 9
Simson 20
Slavens 20
Smith 17,20,23
Soule 8
Spencer 5,14
Spray 21
Springer 23
Stackpole 6,9
Stanley 18
Starbuck 5
Starr 24
Steele 19,21
Steiner 23
Stenton 9
Stevens 16,20
Stockham 5,6
Strahan 18
Strong 19,22
Studebaker 17
Sturm 22
Sullivan 20
Summers 20
Sutherland 17
Swanson 17

Sweazey 15
Swecker 22

Taul 22
Thacher 5
Thiele 17
Thompson 17
Thomson 15
Thurber 19,20
Tibbits
Torneden 19
Traxler 20
Treiuheller 6
Tripp 5
Trueblood 16

Ulrich 21
Unger 19

VanDevanter 17
VanNeste 22
Vaughn 18
Vitt 20
Vogler 16
VonEelking 9

Wagner 23
Waite 9
Walker 19
Wallace 17
Walter 19,20,22,23
Warner 5
Waters 9
Watkins 18
Watts 22
Webber 6
Wedell 17
Weeks 19
Weis 6,9
Weiss 10
Wellvorn 18
Wenrick 5
Westerhouse 19
Wetherby 23
Weybright 18

White 6,8,10,16,22
Whittier 5
Wiggins 23
Wilcox 18
Williams 20,22
Wills 5
Wilson 20,21
Wing 6
Winter 22
Winthrop 6
Wise 23
Wood 5,6
Woody 6
Wulfkuhle 20
Wurts 10
Winters 20

Yakle 17
York 19
Young 5,15

Douglas County, KS. Genealogical Society, Inc.
Publications Mail Order Form

Books & Publications

Col. 1 Col. 2

Original Pre-Emptions in Douglas County, KS	9.18	8.65
Original Owners in the City of Lawrence, KS	11.10	10.45
Lawrence City Directory & Business Mirror 1860-61	6.35	6.00
Lawrence City Directory 1875-6	6.35	6.00
C. W. Smith Lawrence, KS Undertaker & Embalmer 1890-1907	8.45	8.00
Douglas County, KS Marriages 1854-1884	19.72	18.55
1875 Douglas County, KS Census	19.60	18.50
Index to Rural Schools & Schoolhouses of Douglas County, KS	4.21	4.00
Five Generation Ancestor Charts of DCGS Members-Vol. 1(1984)	8.41	8.00
Five Generation Ancestor Charts of DCGS Members-Vol. 2 (1992)	10.55	10.00
Complete Tombstone Census of Douglas County, KS Vol. 1 (HARD BOUND)	82.97	78.00
Complete Tombstone Census of Douglas County, KS Vol. 2 Sold by set Only (2 Sets left)		
Complete Tombstone Census of Douglas County, KS Vol.1 (Spiral-soft bound)	37.07	35.00
Complete Tombstone Census of Douglas County, KS Vol.2 (Spiral-soft bound)	42.42	40.00
Douglas County, KS., Family Histories 1991-1992, Vol.1 <u>{Reduced Price}</u>	71.28	67.00
The House Building: My Search for Its Foundations by Carol Buhler Franch (Society earns \$6.78)	20.62	19.45

MAPS-All maps are folded flat for shipping

Douglas County, Kansas Territory Landowners 4 July 1857 Map & Index Set(Map 19" x 20)	6.35	6.00
Historic Map of Douglas County, Kansas (31" x 22")	6.35	6.00
Road Map of Douglas County, KS Cemetery Dist. (18" x 19")	2.64	2.50
Plan Map of Douglas County, KS (13 " x 12")	2.64	2.50

THE PIONEER- Quarterly

Back Issues	4.74	4.50
Contents Vol. I-XII	2.42	2.30
Contents XIII	.59	.57
Index Vol. I, II, III, IV	6.35	6.00
Index Vol. V	3.14	3.00
Index Vol. VI	3.14	3.00
Index Vol. VII	5.28	5.00

CHARTS

Our Family Tree-Six Generations (24" x 30") Color (Folded Flat for shipping)	3.67	2.65
Seven Generations-The Everton Publishers, Inc. 17" x 22"(Shipping charge not included)	3.74	3.50

Kansas residents use Col. 1, Libraries and Out of State Residents use Col. 2. Circle price to order.

Prices include postage/handling and KS. Sales Tax (6.9%). These prices supersede all previous prices.

Make check payable to D.C. G. S.

NAME _____

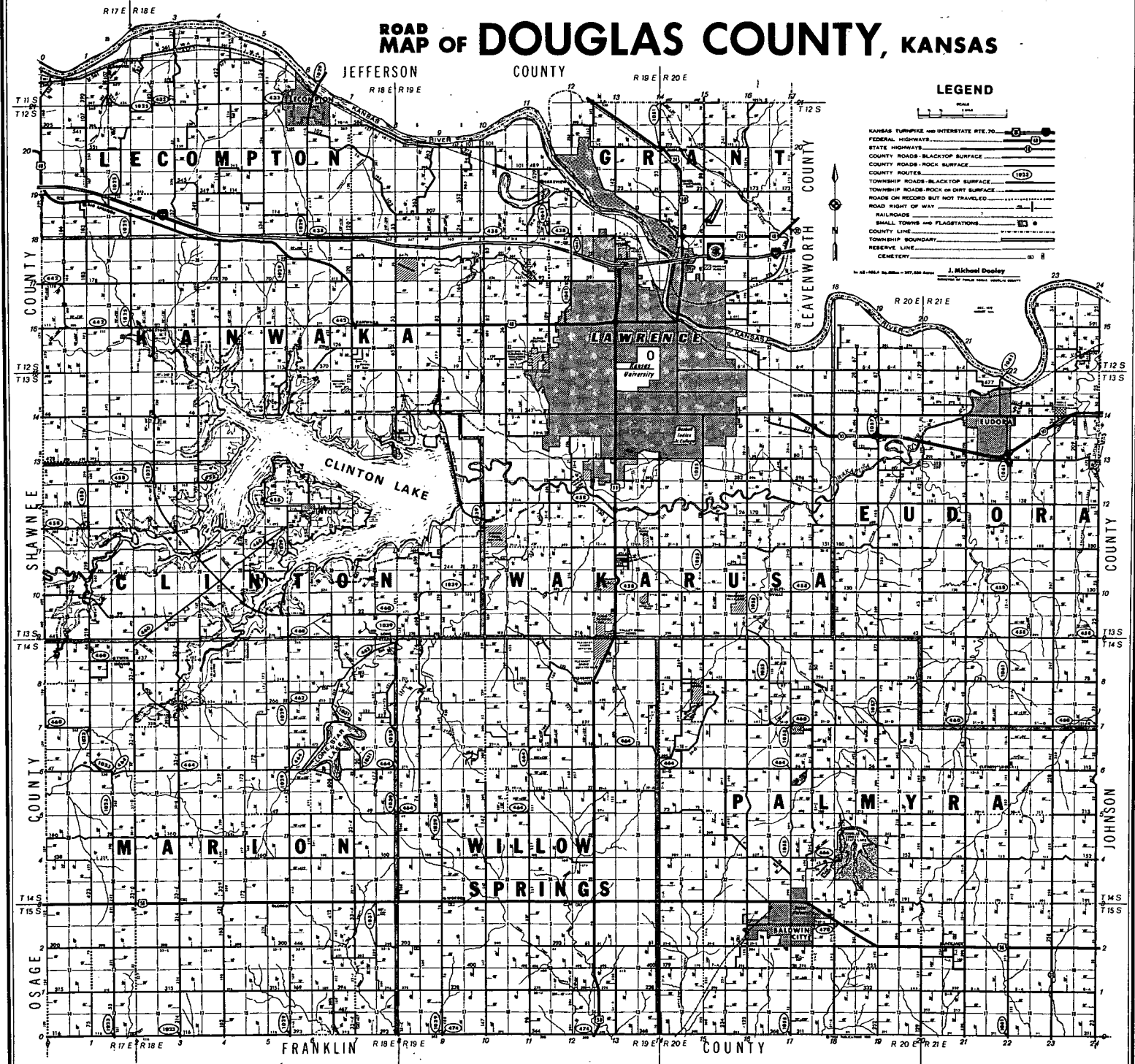
ADDRESS _____

CITY _____ STATE _____ ZIP CODE _____

Send order form with remittance to:

Douglas County Genealogical Society Inc. P.O. Box 3664 Lawrence, KS. 66046-0664

ROAD MAP OF DOUGLAS COUNTY, KANSAS



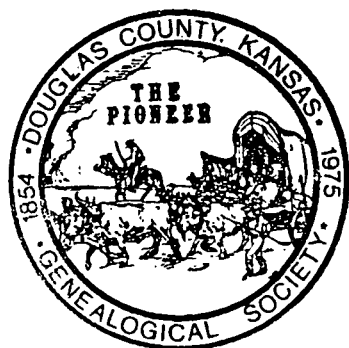
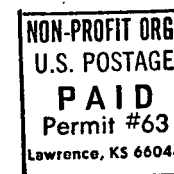
LEGEND

- KANSAS TURNPIKE AND INTERSTATE RTE. 70
- FEDERAL HIGHWAYS
- STATE HIGHWAYS
- COUNTY ROADS - BLACKTOP SURFACE
- COUNTY ROADS - ROCK SURFACE
- COUNTY ROUTES
- TOWNSHIP ROADS - BLACKTOP SURFACE
- TOWNSHIP ROADS - ROCK OR DIRT SURFACE
- ROADS ON RECORD BUT NOT TRAVELED
- ROAD RIGHT OF WAY
- RAILROADS
- SMALL TOWNS AND FLAGSTATIONS
- COUNTY LINE
- TOWNSHIP BOUNDARY
- RESERVE LINE
- CEMETERY

By Act of 1927, approved by the Board of Supervisors, J. Michael Dooley
Map of Douglas County, Kansas

The Pioneer
Douglas County, Kansas Genealogical Society, Inc.
P.O. Box 3664
Lawrence, Kansas 66046-0664

FORWARDING AND RETURN POSTAGE GUARANTEED
ADDRESS CORRECTION REQUESTED

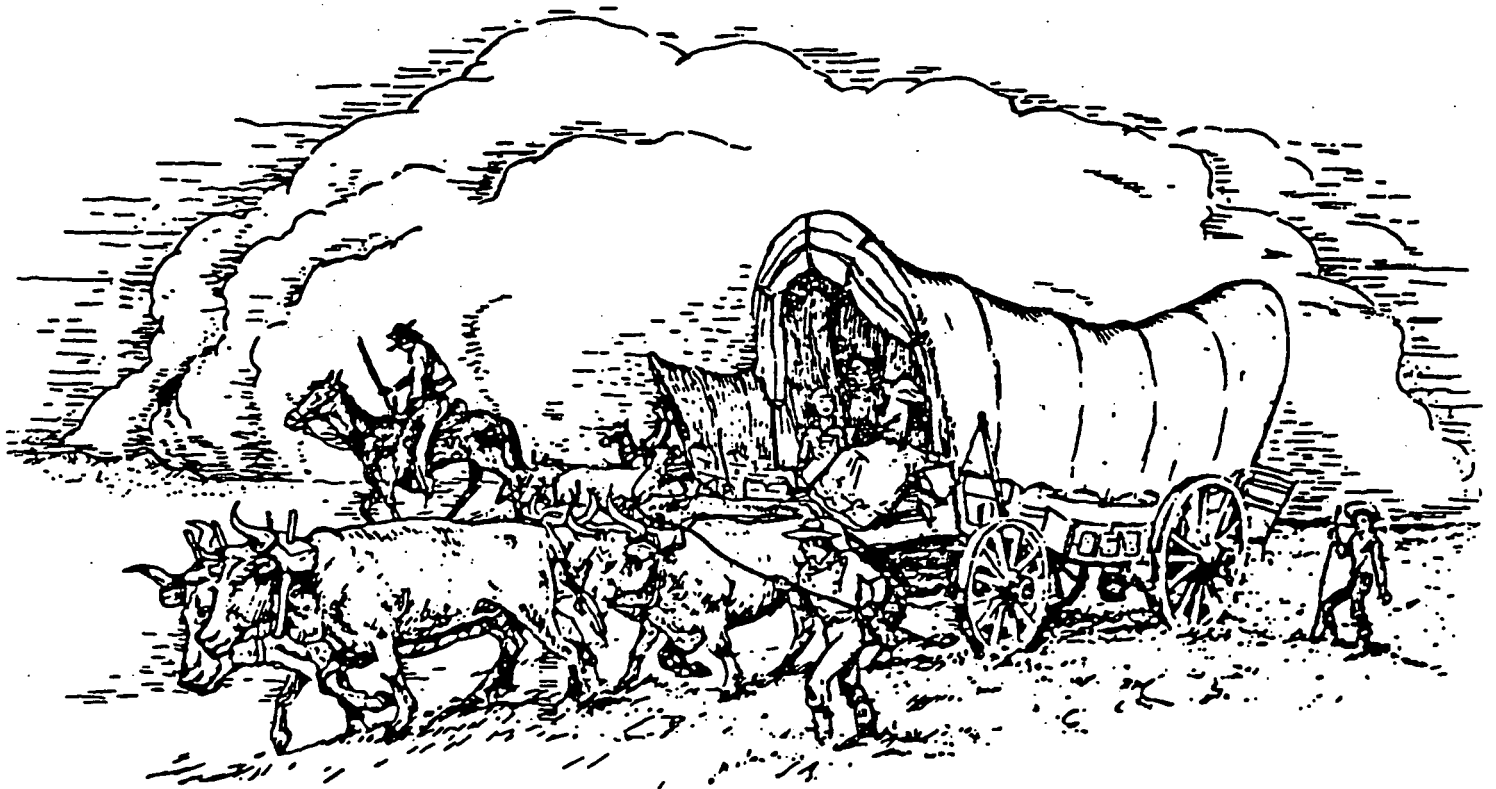


Use as Master for copies

33 pg x 5

Volume 22, nos. 1-2
January-April 2000

THE PIONEER



Published Quarterly By:

Douglas County Genealogical Society

P.O. BOX 3664

LAWRENCE, KS 66046-0664

DOUGLAS COUNTY GENEALOGICAL SOCIETY, INC.

P.O. Box 3664
Lawrence, KS 66046-0664

Administrative Committee and Jobs Assumed

Jackie Kennedy	Treasurer
Patti Garrett	Programs
Beverley Chapman	Publications
Carol Albertson	Membership
Shelley Hickman Clark	Abstracts
Chuck and Erma Worley	Librarians
Don and Wilma Vaughn	Web Page
Paul Jordan	Genealogist

Pioneer

Mary Burchill	Editor
Iona Spencer	Typist
J. Bunker Clark	Layout and Typesetting

The Douglas County Genealogical Society is a non-profit organization. Meetings are held at intervals and announced in the *Lawrence Journal World*. Membership fees are \$15 single, \$2 for each additional member of the same household. Checks should be made payable to the Douglas County, Kansas, Genealogical Society (DCGS) and sent to the address above. The fiscal and membership year is from January 1 to December 31. Visitors are always welcome at the meetings.

The Douglas County Genealogical Society Library is located in the Helen Osma Room on the lower level of the Lawrence Public Library, 707 Vermont, Lawrence. Hours are Monday through Friday, 9:30am-9pm; Saturday, 9:30am-6pm; and Sunday, 2-6pm. Anyone may use the library, but items may not be checked out. Microfilm readers are available in the Osma Room.

**Volume 22, nos. 1-2
January-April 2000**

THE PIONEER

PUBLISHED QUARTERLY BY
THE DOUGLAS COUNTY, KANSAS, GENEALOGICAL SOCIETY, INC.
P. O. Box 3664
Lawrence, Kansas 66046-0664

Volume 22, nos. 1-2

January-April 2000

CONTENTS

"Don't Let This Happen to You" ..	2
Upcoming Events	3
News Items from the Web	3
Genealogical Books and Scrapbooks Donated to the Society by Kathryn J. Bunton	5
How to Research Your Medical Family Tree	10
"From Unbroken Sod to Paved Roads," by Mrs. Howard Henry	13
Pedigree Chart of Janice (Jan) Sackrider	15
Directory of Douglas County Public Schools, 1935-1936	16
"Being Creative with Troublesome Kin"	24
Dues Form for 2000	24
Index	25

* * *

The Pioneer welcomes articles and records for publication that are relevant to Douglas County family history, with the exception of published and copyrighted material. It is not necessary that articles be camera-ready, but if you are typing for that purpose, be sure to leave enough margin space for binding. Send submissions to the *Pioneer* editor at the address above, or submit to one of the Administrative committee. If you can give us the articles on disk we would appreciate it.

Address corrections: If your *Pioneer* is returned to us by the post office for incorrect address, and you have not filed an address correction with the Society, the *Pioneer* will be remailed to you only upon receipt of \$4 to cover post office charges to us.

Don't Let This Happen to You!



You are cordially invited to attend
The LifeStory National Writer's Workshop

Conducted by Charley Kempthorne, Editor of *LifeStory Magazine*; author of *For All Time: A Complete Guide to Writing Family History, etc.*

Sat., Mar. 25, 2000 9:30 am to 4 pm
Auditorium, Lawrence Public Library

Writing your Family History

Join us for an inspiring and entertaining day of discussion, writing and sharing of family histories led by Charley Kempthorne, called "the nation's leading expert on writing personal and family history." Just some of the topics to be discussed are: Basic techniques of narrative (history) writing; Using a Journal to keep family history as you live it; Writing extended captions for family photographs; and Publishing your history for your family.

Make check payable to The Kansas Authors Club, Dist. II. Tuition is \$45; after Mar. 18, \$55; send to Eugene Bovee, Treas., 808 Mississippi, Lawrence, KS 66044. For information call Mary Burchill at 843-9199. Register now as space is limited.

**Sponsored by The Douglas County Genealogical Society
& The Kansas Authors Club**

UPCOMING EVENTS

On **Saturday, March 25th**, there will be a workshop on Writing Life History presented by **Charley Kempthorne** at the Lawrence Public Library. It will be sponsored by the Kansas Authors Club and the Douglas County Genealogical Society. It will be from 9:30am to 4:30pm, with an hour from 12 to 1 for lunch on your own. Enrollment is first come, and the fee is \$45. The auditorium will seat 100 people, so enroll early. There will be application information in the Osma Room and from the Kansas Authors Club.

Charley Kempthorne has been teaching people how to write about their lives since 1976, when he started the first "reminiscence workshop" in the nation. Like many students in his workshops, he has been a writer all of his life, keeping a diary as a child and using his earnings from farm work to buy a typewriter at the age of 11. He painted the keys of the typewriter with luminous paint so that he could write after his parents said lights out. (It didn't work.)

Charley has degrees in writing and history from the University of Kansas, as well as an M.F.A. from the famed Iowa Writer's Workshop at the University of Iowa. A former college professor, farmer, and painting contractor, in 1991 he founded the LifeStory Institute and, with his wife, *LifeStory Magazine*, which he has edited ever since.

June Fritz Kempthorne grew up on a Kansas farm. In college she won prizes for her art, exhibited in several national shows and won the Governor's Prize at Kansas State University, where she took a B.F.A. in printmaking in 1972. For many years she owned and operated a paperhanging and painting business. Co-founder with her husband, Charley, of *LifeStory Magazine*, she is now the art director and publisher. June assists in the workshops in many capacities, and presents a segment on how to lay out and design one's writing and photographs for publication. Together she and her husband have presented workshops in more than twenty states and Canada.

There is a complete file of *LifeStory Magazine* in the Osma Room, donated by Gene Bovee.

Barb Seiwald, who works at the Douglas County Title Company, will speak to us about "Abstracts of Douglas County," on **Saturday, May 6**, at the Lawrence Public Library. She has been instrumental in getting many Douglas County abstracts to the Society. She has used these abstracts to further her genealogical research and will share a lot of this information with us.

SOME NEWS ITEMS FROM THE WEB

These items come from Ancestry Weekly Digest, accessed at <http://www.ancestry.com>.

Save 2000 Census information for future genealogists.

Don't make your descendants wait seventy-two years to see your 2000 census information. Photocopy the form before you mail it back and place the copy in your genealogy files. —Jim Guth.

Misspellings.

When ordering a vital record (birth, death, marriage, etc.), it is always important to list any

possible variations in the spelling of the surname that you would like them to check. I recently ordered a death record for my great grandfather, William Henry Hortman, who died in 1920. I was quite disappointed when a letter came back saying no record was found, although I knew the specific date and place where he died. Someone urged me to try different combinations of his name. I knew that I had seen Hortman misspelled as Hartman on some documents, so called the records office back and asked them to check it as Hartman. Bingo! Although the name on the death record itself was spelled correctly, the index had it misspelled as Hartman. The clerk explained that she had checked various spellings on the reel of microfilm where Hortman was listed, but Hartman was on another roll and she would never have thought to check it if I hadn't requested it. —Judy Reed.

Adding biographical text.

Recently I decided to put all my family tree information into narrative form so that it would be easy to understand for my non-genealogist relatives. I printed a five-generation chart and then, going numerically, wrote a short narration for each person on the chart. I included source information right in the text, writing the census information exactly as the family was listed. I intended on making this easy for my family to understand, but it has benefited me immensely. Instead of looking through separate files for birth, marriage, wills, etc., I can simply look at my narrative and it is all there together. I included where I had looked and whether or not there were records found. This project has made it very easy to see if I have overlooked certain search options for that individual. I have saved the information on my hard drive and on a disk, and so updating the narrative will be easy. I wish I had done this a long time ago. —Brenda.

Census page copies pay off.

When doing census work, be sure to copy the whole page and not just abstract your family. I did just that the other day and it paid off. When I got home I was looking through the Ancestral File and found the family along with a listing of brothers and sisters of the gentleman I was looking for. I got out my copied census and who was two houses away? None other than his married sister. I got two families with one push of the copy button. —Janet Newell

Rootsweb Review and Missing Links

Myra Vanderpool Gormley and Julia Case are the creators of these "e-zines." Free subscriptions to these two weekly genealogy e-zines are available to interested Family History researchers. Send your "subscribe" message via e-mail to <rootsweb-review-L-request@rootsweb.com> and <missing-links-L-request@rootsweb.com>. (Reprinted from *Heart Lines*, no. 131 (Jan/Feb 2000), published by the Heart of America Genealogical Society of Kansas City, MO.)

GENEALOGICAL BOOKS AND SCRAPBOOKS FROM KATHRYN BUNTON

Beulah Alice Keilman Ricketts (1887-1973) compiled over many years ten bound scrapbooks concerning genealogy. Her daughter, Kathryn Jeanette Bunton, Lawrence resident (born here in 1912) and longtime member of the Douglas County Genealogical Society, indexed the contents and has recently presented them to the Society for its collection in the Lawrence Public Library. Here are the general subjects, by volume. Beulah's family, in part, begins in the U.S. with the immigration of George Bunker to New England about 1650. The family then settled on Nantucket Island. A prominent relative was Dr. Alice Bunker Stockham (1833-1912), the fifth American woman to earn a M.D. degree, whose brother David Bunker (1830-1905) moved to Lawrence in 1890 to be an instructor at Haskell Indian Institute. David's son Charles Dean Bunker (1870-1948) began working for KU's Natural History Museum in 1895, and his ashes are scattered outside the museum; his grandson Charles Harry ("Chuck") Warner is president of the Lawrence's Mercantile Bank. Another cousin of Kathryn is Thomas Beisecker, professor of communication studies at KU. These volumes contain miscellaneous clippings about Nantucket and other places of the family's roots, but also excerpts of the genealogy professionally prepared in New York by the Lewis Historical Publishing Co. in the early 1930s.

1 - Guillaume Bon Court / William Bunker / George Bunker / William Bunker / Benjamin Bunker / Obed Bunker / Job Bunker / Isaac Bunker / Slocum Hussey Bunker / David Bunker / Jane Bunker (wife of William C. Hicks) / Alice Bunker (wife of Henry Stockham) / Susan Jane Spencer (wife of David Bunker) / Louis Arthur Bunker / Marjorie Bunker (wife of Ernest Newlin) / Ruth Newlin (wife of Howard Wenrick) / Caroline Elizabeth Bunker (wife of Jacob Keilman)

2 - Earl David Keilman / Lucy Jane Keilman (wife of Lester Beisecker) / Thomas David Beisecker / Bonnie and Beth Beisecker / Beulah Keilman (wife of Hugh Bunton, then Earl C. Ricketts) / Hugh Bunton Jr. family / Ricketts family / Rachel Bunker Dean and Dean family / Slocum Hussey Bunker / Alice Bunker (wife of Dr. G. H. Stockham)

3 - Mosher family / Lewis family / Deborah Paddock family / Richard Sears / Anthony Thacher / Henry Palmer family / Benjamin White family / John Wood / Matilda Wood Bunker / Samuel Wood / Mary Dyer / James Brennan / Stephen Wood of Elmdale, KS / Jethro Wood / William Chase

4 - Henry Sherman / Roger Sherman / John Tripp / Dolar Davis / Robert E. Perry / Edmond Freeman / Mary Bunker (wife of George Wills) / Thomas Savage / Ralph Earle / Hussey family of England / John Hussey / Sarah Hussey / Erastus Hussey / John Brown / Thomas Gardner / Edmund Hobart / Joseph Grafton / Tristram Coffin of Nantucket / Nicholas Coffin of England / Lucreta Coffin Mott

5 - Edward Starbuck / Henry Tibbits / John Greenleaf Whittier / original Quaker hearse / Old North burying ground / "Nantucket," by Hazel Young / "The Land of Long Ago" / Capt. James Grant / Whaling off California Coast / Pitcairn Island / Macy Line / Steven Foster / Coffin Line / Town of Sandwich, Mass. / Barnstable County, Mass. / Egbert, first king of England / 138 generations from Adam / Book of Adam

6 - Should you have a family tree? / Big ancestor hunt / Historic regions / A century-old budget / Nantucket Historical Society / Old Nantucket sayings / Descendants of Kezia Coffin / Migrations of Nantucketers to south and west / Lydia Pinkham / Small stories of interest / Cancer of colonial days / The spirit of '76 / Tragedy on Nantucket / Cape Cod / "Charley Weaver" / Quantrill / Great seal of the United States / Betsy Ross / Our flag / Benjamin Franklin

7 - Clara T. Woody letters / Douglas Stockham letters / Franklin Fogler family letters / Hobby story by Beulah Ricketts / Seth Colman / Founders of America & Revolutionary service chart of ancestors / Carry Nation / Ricketts family / Ruth Lindenberger / Col. Robert Bruce Ricketts

8 - Keilman family / Upper Bucks County / Winnie Keilman / William Keilman / New Hope, Pa. / Jacob Keilman / Brattlesborough, Vt. / Spring Valley, Ill. / Beulah and Earl Keilman / Julia Moore / Hugh Bunton Jr. / Kathryn Bunton / Blanche Keilman / Lloyd Bunker / "The 1905 Windmill" / Dorothy Treiheller / Beisecker family / Jonathan Hussey / Pioneer women of Kansas / Memorial and historic markets of Kansas / Julia Webber letters / Beulah Ricketts / Al Capp / Dr. H. T. Jones / Dr. H. P. Jones / Ellsworth Bunker / August E. Keilman / Edward Moran

9 - David Bunker / Julia Oliver Bunker / H. L. Bunker / Maude Phillips / D.A.C. / David Bunker letters / Noah White / John Wing / Edward Stackpole / Harry S. Bunker / John Bunker Clark / Shroud of Turin

10 - Blanche Keilman / Clara Woody / Bunker family from Nantucket to Kansas / Beulah Ricketts / White family / Crosby family / A. B. Humphrey / Kathryn Bunton / Daphne Rhodes / A. H. Bunker / Ellsworth Bunker / Stonage / Col. Sam N. Wood

copied by J. Bunker Clark
October 1998

Kathryn Bunton also gave to the Society her collection of genealogy books, as follows:

Genealogical Books Donated to the Douglas County (Kansas) Genealogical Society
by Kathryn J. Bunton
November 1999

- Adams, Arthur, and Frederick Lewis Weis. *The Magna Charta Sureties, 1215: The Barons Names in the Magna Charta, 1215, and Some of Their Descendants Who Settled in America, 1607-1650*. 2nd ed., rev. Walter Lee Sheppard, Jr. Boston, 1955; reprint, Baltimore: Genealogical Publishing Co., 1964.
- Austin, John D. *Stephen Hopkins of the Mayflower and His Descendants for Four Generations*. N.p.: General Society of Mayflower Descendants, 1988; reprinted 1989.
- Banks, Charles Edward. *The Winthrop Fleet of 1630: An Account of the Vessels, the Voyage, the Passengers and Their English Homes from Original Authorities*. Boston, 1930; reprint, Baltimore: Genealogical Publishing Co., 1976.
- Barber, Rev. Henry. *British Family Names: Their Origin and Meaning, with Lists of Scandinavian, Frisian, Anglo-Saxon and Norman Names*. 2nd ed., enl. London, 1903; reprint, Baltimore: Genealogical Publishing Co., 1968.

- Begley, Donal F. *The Ancestor Trail in Ireland: A Companion Guide*. Booklet, Dublin: Heraldic Artists, 1982.
- Birch, Walter de Gray. *Domesday Book: A Popular Account of the Exchquer Manuscript So Called, with Notices of the Principal Points of General Interest Which It Contains*. London: Society for Promoting Christian Knowledge; New York: E. & J. B. Young & Co., 1887.
- Bolton, Charles Knowles. *Scotch Irish Pioneers in Ulster and America*. Boston, 1910; reprint, Baltimore: Genealogical Publishing Co., 1981.
- Boyer, Carl, 3rd, comp. *Ancestral Lines Revised: 190 Families in England, Wales, Germany, New England, New York, New Jersey and Pennsylvania*. Newhall, CA: author, 1981.
- Bradney, Joseph Alfred, transcr. and ed. *Registra antiqua de Llantilio Crossenny et Penrhos in Comitatu Monumethensi, 1577-1644* [at Bodleian Library, Oxford]. London: Mitchell Hughes and Clarke, 1916.
- Burke, Arthur Meredyth. *Key to the Ancient Parish Registers of England & Wales*. London, 1908; reprint, Baltimore: Genealogical Publishing Co., 1962.
- Camp, Anthony J. *Tracing Your Ancestors*. London: W. & G. Foyle, 1964.
- Clark, Arthur. Foreword by C. Gordon Jolliffe. *Chepstow: Its Castle and Lordship*. [Chepstow]: Newport & Monmouthshire Branch of the Historical Association, n.d.
- Coldham, Peter Wilson. *English Estates of American Colonists: American Wills and Administrations in the Prerogative Court of Canterbury, 1700-1799*. Baltimore: Genealogical Publishing Co., 1980.
- Davis, George Arthur, comp. *Davis and Fifty Allied Colonial Families of New England*. N.p.: n.p., 1956.
- Davis, Horace. *Dolor Davis: A Sketch of His Life, with a Record of His Earlier Descendants*. Cambridge, MA: Riverside Press, 1881; reprint, Ann Arbor: University Microfilms International.
- Davis, William W. H. *A Genealogical and Personal History of Bucks County, Pennsylvania*. 2nd ed., ed. Warren S. Ely and John W. Jordan. New York and Chicago: Lewis Publishing Co., 1905; reprint, Baltimore: Genealogical Publishing Co., 1975.
- Delderfield, Eric R., ed., with D. V. Cook. *Kings and Queens of England*. [New York]: Stein and Day, 1972; New York: Weathervane Books, 1978.
- Dicker, J. J. *Life in Hewelsfield and Brockweir during the 16th Century*. Foreword by C. Gordon Jolliffe. Chepstow: Newport & Monmouthshire Branch of the Historical Association & Shepstow Society, 1950.
- Dunlop, Jean. *The Scotts. Johnston's Clan Histories*. Edinburgh and London: Johnston & Bacon, 1957; reprinted 1971.
- Falley, Margaret Dickson. *Irish and Scotch-Irish Ancestral Research: A Guide to the Genealogical Records, Methods and Sources in Ireland*. Vol. 1: *Repositories and Records*. Evanston, IL: author, 1962.
- Gardner, David E., and Frank Smith. *Genealogical Research in England and Wales*. Vol. 1. Salt Lake City: Bookcraft Publishers, 1956.
- Gardner, Will. *The Coffin Saga: Nantucket's Story—from Settlement to Summer Visitors*. Nantucket Island, MA: Whaling Museum/Cambridge: Riverside Press, 1949.
- Gardner, Will. *The Triumphant Captain John and Gardners and Gardiners: Twelve Founders of Families*. Nantucket Island, MA: Whaling Museum/Cambridge: Riverside Press, 1958.
- Gébler, Ernest. *The Plymouth Adventure: A Chronicle Novel of the Voyage of the Mayflower*. Garden City, NY: Doubleday & Co., 1950.

- Gibson, J. S. W., comp. *A Simplified Guide to Bishops' Transcripts and Marriage Licenses: Their Location and Indexes in England, Wales, and Ireland*. 2nd ed. England, 1981; reprint, Baltimore: Genealogical Publishing Co., 1982.
- Gibson, J. S. W., comp. *A Simplified Guide to Probate Jurisdictions: Where to Look for Wills in Great Britain and Ireland*. 2nd ed. England, 1980; reprint, Baltimore: Genealogical Publishing Co., 1982.
- Gleanings from English Records about New England Families*. Salem: Salem Press, 1880.
- Hackett, J. Dominick, and Charles Montague Early. *Passenger Lists from Ireland*. Excerpted from *Journal of the American Irish Historical Society*, vols. 28-29. Baltimore: Genealogical Publishing Co., 1965.
- Hills, Leon Clark. *History and Genealogy of the Mayflower Planters and First Comers to Ye Olde Colonie*. Cape Cod Series, vol. 1. Washington, 1936, 1941; reprint, Baltimore: Genealogical Publishing Co., 1977.
- Hutton, Mary Louise Marshall, comp. *Seventeenth Century Colonial Ancestors of Members of the National Society Colonial Dames XVII Century, 1915-1975*. 1976; reprint, Baltimore: Genealogical Publishing Co., 1983.
- Johnson, Curtiss S. *The Indomitable R[owland] H[ussey] Macy*. New York: Vantage Press, 1964.
- Lawton, Mrs. James M. *Family Names of Huguenot Refugees to America*. Baltimore: Genealogical Publishing Co., 1963.
- Leynse, James P. *Preceding the Mayflower: The Pilgrims in England and in the Netherlands*. Introduction by Frances Diane Robotti. New York: Fountainhead Publishers, 1972.
- Loyd, Lewis C. *The Origins of Some Anglo-Norman Families*. Ed. Charles Travis Clay and David C. Douglas. Leeds, 1951; reprint, Baltimore: Genealogical Publishing Co., 1975, 1980.
- MacLysaght, Edward. *A Guide to Irish Surnames*. Dublin: Helicon, 1964; reprint, Baltimore: Genealogical Book Co., n.d.
- Magee, Peggy. *Directory of Family Research*. Prescott, AZ: Magee Publications, 1982.
- Martin, John Patrick. *The Story of Dartmouth*. Dartmouth, Nova Scotia: author, 1957. Signed to Mrs. E. C. Ricketts by author, 9 May 1962.
- Mathews, Anthony. *Origin of the O'Neills, with a History of the Septs*. Dublin: author, 1971.
- Mayflower Families Through Five Generations: Descendants of the Pilgrims Who Landed at Plymouth, Mass. December 1620*. Vol. 1: Francis Eaton family, Samuel Fuller family, William White family; vol. 3: George Soule family. Plymouth, MA: General Society of Mayflower Descendants, 1975-80.
- Mayflower Quarterly: A Journal of Pilgrim History and Genealogy in Colonial New England*. Vol. 54, no. 4 (November 1988); vol. 55, no. 1 (February 1989).
- Meehan, Rev. C. P. *The Fate and Fortunes of Hugh O'Neill, Earl of Tyrone, and Rory O'Donel, Earl of Tyrconnel: Their Flight from Ireland, and Death in Exile*. 2nd ed. Dublin: James Duffy, 1870.
- Morrison, N. Brysson. *Mary Queen of Scots*. New York: Vanguard Press, 1960.
- Neagles, James C. and Lila Lee. *Locating Your Immigrant Ancestor: A Guide to Naturalization Records*. Logan, UT: Everton Publishers, 1975.
- New England Historical and Genealogical Register*, July 1916.
- Noyes, Sybil, Charles Thornton Libby, and Walter Goodwin Davis. *Genealogical Dictionary of Maine and New Hampshire*. Portland, ME, 1928-39; reprint, Baltimore: Genealogical Publishing Co., 1972, 1983.

- O'Duirnin, Ulliam/William P. Durning. *If You're a Wee Bit Irish: A Guide to Family Relationships as Collected from the Oral Tradition*. La Mesa, CA: Irish Family Names Society, 1978; 4th printing, 1982.
- Pennsylvania Line: A Research Guide to Pennsylvania Genealogy and Local History*. 3rd ed. Laughlintown, PA: Southwest Pennsylvania Genealogical Services, 1983.
- Perry, Rev. Calbraith Bourn. *The Perrys of Rhode Island and Tales of Silver Creek: The Bosworth-Bourn-Perry Homestead*. New York: Tobias A. Wright, 1913.
- Pine, L. G. *Heraldry, Ancestry and Titles: Questions and Answers*. New York: Gramercy Publishing Co., 1965.
- Pine, L. G. *They Came with the Conqueror: A Study of the Modern Descendants of the Normans*. London: Evans Bros., 1954.
- Porter, Jane. *The Scottish Chiefs*. New York: American News Co., n.d. [1st ed. preface dates December 1809].
- Reginald de Hereford. *The History of Ruthin Castle*. Booklet, n.p., n.d.
- Scott, Kenneth, and Rosanne Conway, comps. *New York Alien Residents, 1825-1848*. Baltimore: Genealogical Publishing Co., 1978.
- Sherman, Roy V. *The New England Shermans*. [Akron, OH]: author, 1974.
- Shurtleff, Nathaniel B., ed. *Records of the Colony of New Plymouth in New England*. Boston: William White, 1857; reprint, Baltimore: Genealogical Publishing Co., 1976.
- Sims, Clifford Stanley. *The Origin and Signification of Scottish Surnames, with a Vocabulary of Christian Names*. [Tokyo]: Charles E. Tuttle, 1869; reprint, New York: Avenel Books, [1972].
- Stackpole, Edouard A. *Nantucket in the American Revolution*. Nantucket Historical Association, 1976.
- Stenton, Frank Merry. *William the Conqueror and the Rule of the Normans*. New York and London: G. P. Putnam's Sons/ Knickerbocker Press, 1908.
- Vital Records of Peru, Massachusetts, to the Year 1850*. Boston: New-England Historic Genealogical Society, 1902.
- Von Eelking, Max. *The German Allied Troops in the North American War of Independence, 1776-1783*. Trans. and abridged from the German [of 1863] by J. G. Rosengarten. Albany, NY: Joel Munsell's Sons, 1893; reprint, Bowie, MD: Heritage Books, 1987.
- Waite, Frances Wise, and Terry A. McNealy, comps. *Bucks County Declarations and Naturalizations, 1802-1906*. Doylestown, PA: Bucks County Genealogical Society, 1985.
- Waters, Ivor. *About Chepstow*. Preface by C. Gordon Jolliffe. Chepstow: Newport & Monmouthshire Branch of the Historical Association & Shepstow Society, 1952.
- Waters, Ivor, comp. *A Chepstow and Tintern Anthology*. Chepstow, Mon[mouthshire County]: Chepstow Society, 1948.
- Waters, Ivor. *Chepstow Miscellany*. Foreword by C. Gordon Jolliffe. Chepstow, Mon[mouthshire County]: Chepstow Society, 1958.
- Waters, Ivor. *Chepstow Parish Records*. Preface by C. Gordon Jolliffe. Chepstow: Newport & Monmouthshire Branch of the Historical Association & Chepstow Society, 1955.
- Waters, Ivor. *The Unfortunate Valentine Morris*. Chepstow, Mon[mouthshire County]: Chepstow Society, 1964.
- Weis, Frederick Lewis. *Ancestral Roots of Sixty Colonists Who Came to New England between 1623 and 1650: The Lineage of Alfred the Great, Charlemagne, Malcolm of Scotland, Robert the Strong, and Some of Their Descendants*. 5th ed., with additions and corrections by Walter Lee Sheppard, Jr. Lancaster, MA, 1951; reprint, Baltimore: Genealogical Publishing Co., 1979.

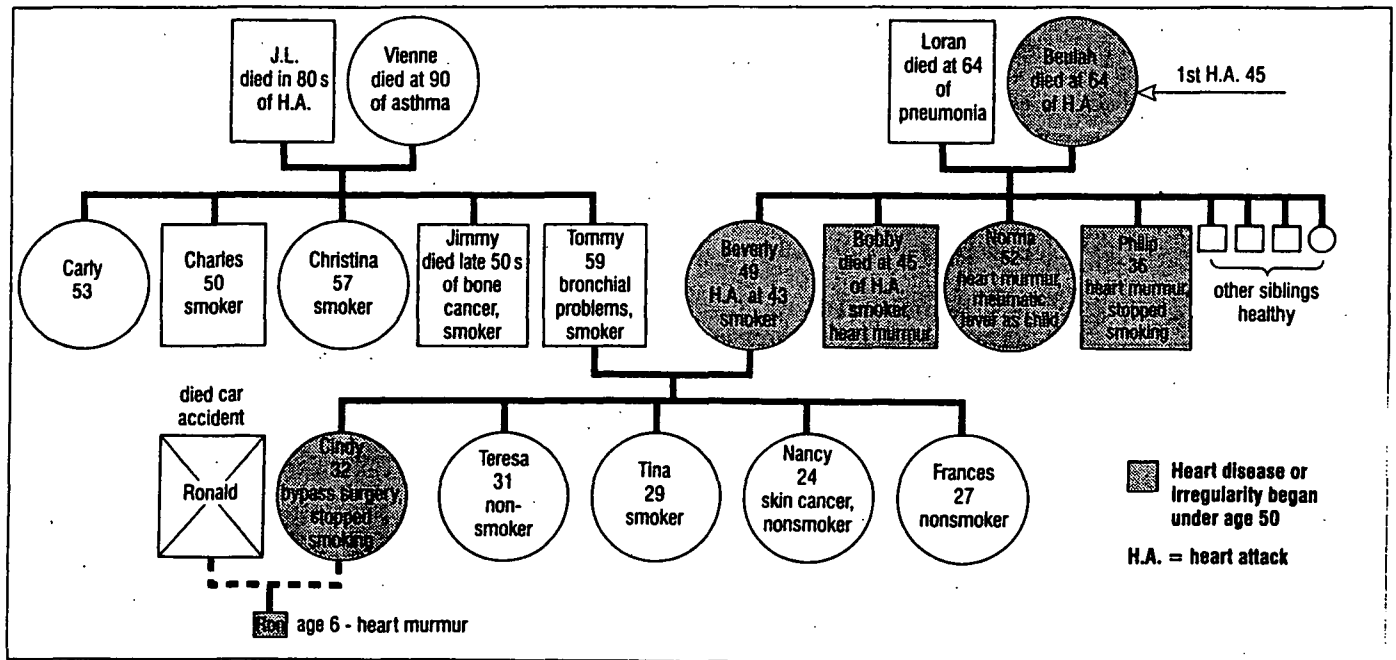
Weiss, M. Charles. *History of the French Protestant Refugees, from the Revocation of the Edict of Nantes to Our Own Day*. Trans. from the French by Henry William Herbert, with an American appendix. 2 vols. New York: Stringer & Townsend, 1854. Xerox bound copy.

White, Thomas and Samuel. *Ancestral Chronological Record of the William White Family, from 1607-8 to 1895*. Concord: Republican Press Assn., 1895; reprint, State College, Ark.: Calvin D. Gruver, n.d.

Wurts, John S. *Magna Charta*, parts 1, 2, 3, 7. Philadelphia: Brookfield Publishing Co., 1944-54.

list by J. Bunker Clark
24 November 1999

How to research *your medical family tree*



(This is an adaptation of an article from the August 1994 issue of *Good Housekeeping* by Carol Krause. She is the author of the book *How Healthy Is Your Family Tree?*.)

HOW TO RESEARCH YOUR MEDICAL FAMILY TREE

If it weren't for knowing her family's medical history, Cindy Leffew might be dead. Last year, when she was 31, Cindy felt a burning sensation from her shoulders down to her wrists. At first, she didn't pay much attention to it. But when the episodes persisted, she went to her doctor, and mentioned to him that her mother had suffered a heart attack at age 43.

Her doctor referred her to a heart specialist, who encouraged her to find out as much as she could about her family's medical history. Cindy learned (see the accompanying "tree") that her mother's brother had died of a heart attack at age 45, and her maternal grandmother had had two heart attacks, the first at age 45, and a fatal attack at 64.

Cindy's heart doctor ordered some preliminary tests, which showed little. But because of her family history of heart disease, the doctor ordered something rare for a female patient of her age—a heart catheter test. Cindy was shocked when it revealed an 80 percent blockage in one of her main arteries. She immediately underwent heart bypass surgery, which may well have saved her from a possible fatal heart attack.

Medical family trees have long been used to counsel prospective parents with family histories of hereditary childhood abnormalities, such as Down's syndrome, cystic fibrosis, hemophilia, muscular dystrophy, and sickle-cell anemia. But scientists have recently discovered that many serious adult illnesses—most notably cancer, heart disease, and diabetes—can have strong genetic links. Knowing about the health of your relative, then, could have a vital impact on you and your family's future health. Here's how you can make your own tree:

GATHERING THE FACTS

Make a list of everyone in your family, including your parents, grandparents, aunts, uncles, and cousins, as well as your children. To construct the tree, use the chart with this article as a model. Draw squares for males and circles for females. (This will help a doctor quickly identify gender-related illnesses.) In each square or circle, enter these simple facts: major illnesses, age at onset of illness, and both cause of and age at death. To find this information:

1. Ask older relatives to tell you about deceased family members.
2. Save medical records. It is helpful to have as many details as possible about a relative's illness. For example, if someone died of a heart attack, did he or she have high cholesterol (a condition that can be hereditary), high blood pressure, a heart defect? Did he or she smoke?
3. Collect death certificates of family members as far back as great-grandparents, if possible. They often indicate the specific cause of death. If you can't find a certificate for an ancestor, and you know in which state he or she died, call or write the state capital and ask how to get a copy of the death certificate.

INTERPRETING YOUR TREE

Pay close attention to the illnesses of "first-degree" relatives (parents, siblings, children) with whom you share the most genes. But if you see a pattern of an illness among any relatives, ask your family doctor to refer you to a specialist in that disease. You should take quick action

if you see the following information on your family tree:

1. Two first-degree relatives with the same or similar cancers. (Note: Breast, uterine, ovarian, and colon cancers can be genetically related.)
2. One first-degree relative with heart disease, life threatening diabetes, or cancer that was diagnosed before he or she was 50. Early onset of an illness can signal a genetic link.

USING WHAT YOU KNOW

If you learn you are at risk for a certain disease, you can immediately make nutritional and life-style changes. For instance, if you discover you may have a genetic predisposition to hardening of the arteries (arteriosclerosis), that may be the incentive you need to stop smoking. If you seem to be at risk for colon cancer, you might be encouraged to switch to a low-fat, high-fiber diet and to schedule periodic colon tests. If breast cancer is common in your family, you may be more diligent about doing monthly breast self-exams and scheduling yearly mammograms.

But the benefits of knowing your family's genetic probabilities go far beyond the traditional advice about life-style and nutrition changes and regular screenings. People at high risk for certain diseases may be advised to undergo preventive surgery to give them peace of mind (such as removal of ovaries for women at high risk of ovarian cancer).

IN THE FUTURE

You can also get a jump start on an even more startling approach to health care. In the next few years, gene therapy will take astonishing leaps and bounds in three ways:

1. *In the embryo.* Already, a handful of couples who carry genes for either cystic fibrosis or Tay-Sachs disease have given birth to healthy babies using a new technique that includes in vitro fertilization. When the embryos (fertilized in a test tube) are only four or eight cells large, they are checked for the defective gene. Only those embryos that are free of the defective gene are implanted in the woman's uterus.
2. *In the ill child.* The first successful use of gene therapy occurred in September 1990 at the National Institute of Health (NIH). A four-year-old girl was ill with ADA (adrenosine deaminase) deficiency, a rare disease which wipes out the immune system. (The "boy in the plastic bubble" had ADA.) NIH doctors gave the girl injections of the missing ADA gene, and four years later, she's doing fine.
3. *In ill adults.* Gene alterations have been tried, with some success, on a small number of terminally ill brain and lung cancer patients, as well as on patients with a family history of very high cholesterol.

Once deadly genes are identified, we can look for them in our blood. But we will be well into the twenty-first century before a low-cost, comprehensive test is available to the public. Until then, learning about your medical family tree may be the best way to ensure you get the tests and intervention you need.

FROM UNBROKEN SOD TO PAVED ROADS

Sees Old Pass On, Speed Eras Dawn

Otto Durow, Big Springs Blacksmith for Half a Century, Pioneer Traveler, Mineral Locator, Storehouse of Early Kansas History, Still Stands at his Flaming Forge.

By Mrs. Howard Henry

Copied from the Topeka Daily Capital-Sunday, Jan. 13, 1929:

He sharpened the plowshares that broke the sod about Big Springs. Today he repairs tractors—plows that turn over ten feet of soil at one time.

He saw the covered wagons that carried thousands of homeseekers into a new land. Today he sees thousands flit past his door in high-power motor cars or huge interstate buses, on a well-paved highway, U. S. No. 40.

Looking upward he sees an occasional airplane skimming thru the ethereal blue, and wonders at the changes time and genius have brought upon the land he helped reclaim from the wilderness that was pioneer Kansas.

Otto Durow, of Big Springs, Douglas county, is near the 80-year mark. He settled in the community where he has made his home all these years, when there was nothing but a trail. Big Springs was one of the stopping places on the Old Oregon Trail.

Dwindles Away, Comes Back.

It became quite a place with hotels, parks, stores, saloons and other accouterments of frontier towns. Then it dwindled away somewhat, but just now is coming back into its own. The postoffice was taken away, and citizens are trying to get it back. The telephone exchange was moved away, and now Big Springs is large enough to support another.

Mr. and Mrs. Durow recently celebrated their 50th wedding anniversary. They have lived all their married lives in the same house, one of the first erected in Kansas territory. They saw the covered wagon caravans streaming over the naked prairie. They saw the border ruffians come and go, in their places coming solid citizenry that has made the Big Springs community one of the finest and most prosperous in the state.

Railroads Chose Lower Paths.

The railroad passed them by, choosing the easier going along the Kaw river, three miles to the north. Big Springs is located on the high divide between the Kaw and Wakarusa watershed. U. S. No. 40 follows this divide thru its entire length, from Topeka to Lawrence, passing directly thru Big

Springs.

Being the only blacksmith, pioneer travelers beat a path to Durow's shop door. Of them he heard the latest gossip, news of Indian massacres further west, latest political happenings in the East, and all the trail news worth relating. Big Springs was the watering and camping places and several large springs furnished an abundance of fine water.

Durow can show curious persons the location of the old Pickens hotel and barroom where the first temperance crusade in Kansas began. Barrels of whisky were rolled out into the street and burned.

Points to Noted Landmarks.

He also can point out fragmentary portions of foundations of early buildings, when Big Springs was quite a little city. Where the city park, with water piped from the springs, furnished trysting place for youthful lovers; where old churches flourished and passed into oblivion; where the old Harper House, another noted hostelry, stood just east of the first United Brethren church in Kansas, with the latter's foundation stones crumbling into dust; traces of the old Oregon and California roads; the exact location of the old log cabin where two girls sold liquor in successful defiance of the temperance adherents; the foundation of the first legislative hall in Kansas; the building where the famous "rump legislature" held its session; the approximate location of the hiding place of a pot of gold, hidden by a scared emigrant on his way to California.

All of these and more can Otto Durow show to those who seek his home in search of historical data. For he is a gold mine of information on things pertaining to early Kansas history. For all his years he is remarkably active, mentally and physically. But he and Mrs. Durow enjoy the best of health, living in their original home built of solid walnut lumber to endure for ages.

When News Spread Slowly.

In the early days, Big Springs received its mail by star route between Topeka and Lawrence. Except for the ever present travelers, news spread slowly. No newspapers reached Big Springs for years after the territory was settled. The United Brethren church burned down one week-day night. Members came in on Sunday, one bringing an organ to furnish music. They were surprised to find their house of worship in ruins. It never was rebuilt. A new one was later erected in another location. Ox teams was the favorite motive power in those days. Lumber for the Durow house, equal to any modern home, was hauled from the Kaw bluffs. Weather-boarding is one and one-half inches thick, of solid walnut.

The story of the pot of gold is vivid in Durow's memory. A train of "prairie schooners" came across the ferry at Lecompton. The train reached Big Springs just as rumors came that Indians had attacked and wiped out the settlement at Topeka, then just a small village. The wagon master and the crippled cook took a pot of gold coins and dug a hole deep in the ground near one of the many springs in the vicinity. Old settlers recall that the wagon-master and cook paid a visit to the log cabin where the two girls sold liquor. Next morning, in muddled state of mind, they went west. Some 15 years later the cook returned. He spent weeks hunting for the treasure.

But Couldn't Find His Gold.

Changed topography thru erosion mixed him up until he couldn't tell heads nor tails of the country. He didn't find the gold. Ever since Big Springs folks have hunted for the pot of gold, but with no success whatever.

Durow is somewhat of a mineralogist. He has a contrivance which he claims is 100 per cent perfect in finding oil, gas and other minerals. He calls it a "Minimeter." It is a queer looking "Dingus," composed of two copper or brass rods, fastened together at one end, with an aperture for holding a flat magnetized disc. He has a disc for each of the more common minerals. If he wants to locate gold, for instance, he inserts the disc that is attracted by gold. Then he places one of the rods in his mouth, the other held tightly by both hands. Walking over the prospect grounds, the disc dips if mineral of that particular kind is beneath.

Locates Rich Oil Fields

Mr. Durow has been given credit for locating several of the richest oil fields in Texas, Oklahoma and Kansas. He also has located minerals in Missouri, Arkansas, Arizona, Nevada, Colorado and other states.

Durow is a great traveler. He likes to hit the trails where man seldom travels. In his car he went to Grand Canyon recently. He camped at a cabin with two other men. The auto road ended five miles from the cabin. The nearest town was 50 miles away. His two companions went for provisions one day and Durow went exploring. Seeing a tunnel-like formation, he entered and started walking, looking back occasionally to make sure the opening he had entered did not escape. After about a mile he saw a light the other way. Coming out in a deep well he looked upward hundreds of feet. The only egress was back thru the tunnel. Then he got scared. What if bears or cougars made this their den? He made haste that no 80-year-old man

would make, unless frightened. But the only sign of life he saw as a starved meadow lark. No wild animals infested that territory. There was nothing to eat--but rocks. Rocks of all colors and hues.

Escapes Barely With Life.

Recently he spent a night in a hotel at Belleville, Tex. It was a new hotel, open the first time that night. About midnight Durow was awakened by the smell of smoke. He awakened his companions and escaped just as the building fell in. It was burned to the ground. Another time he ran into a flooded region, drove 48 hours without sleep in order to keep an appointment some 50 miles away. Tired" He denies that the long drive affected him in the least, despite his 80 years.

Durow can tell interesting stories of his travels and of pioneer Kansas by the hour. He is an excellent storehouse of knowledge on many subjects. Mrs. Durow enjoys life with the same zest that she did 50 years ago when she married the then young blacksmith and most important artisan in the town.

As will be noted in the accompanying pictures, they look nearly alike. This similiarity often is noticed in couples, well mated, and who are of the same mental temperament.

Community Pays Tribute

The whole community of Big Springs pays tribute to Mr. and Mrs. Durow. They are the oldest inhabitants of the place, tho several others can almost equal their record.

Often Mr. and Mrs. Durow grow reminiscent. Their young neighbors gather about and listen, wide-eyed and breathless, to the hair raising tales of actual life in a new country, with none of the modern conveniences. Or they stand at the door of the little blacksmith shop and listen to the flaming forge and the anvil chorus as the veteran smithy adds finishing touches to a piece of machinery, the like of which was not in existence 50 years ago.

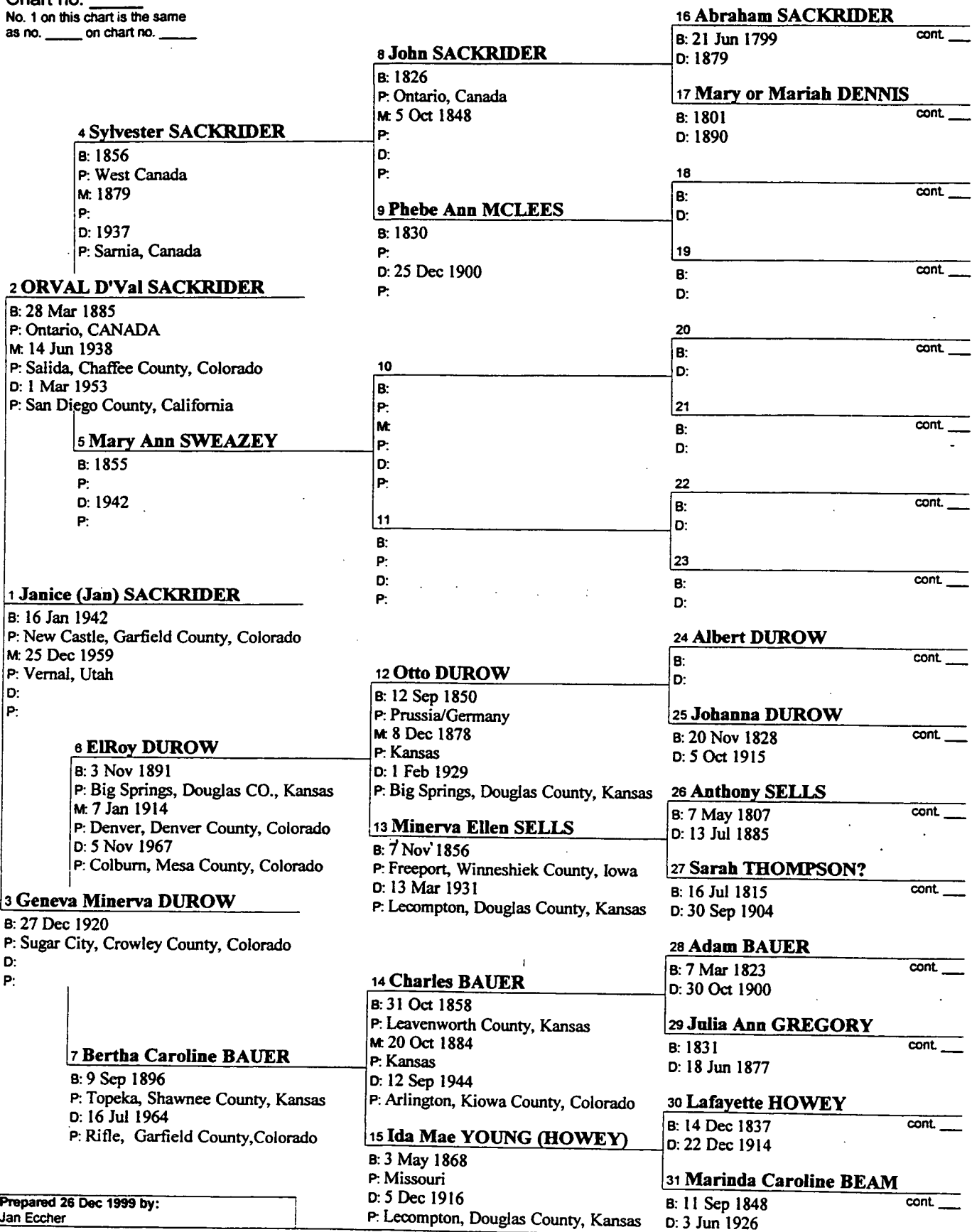
Note: The writer Mae Henry of this article was a teacher in this community. The old Durow home is still standing and liveable and is owned by one of her grandsons.

Another article on the history of Big Springs written by Wm. Franklin Spencer, also about the Big Springs Militia who fought in the Battle of the Big Blue October 22, 1864 at Westport against Sterling Price is published in the Spring 2000 issue, of the Lecompton Historical Society newsletter the Bald Eagle by Iona Spencer. It can be seen at Watkins Museum at Lawrence. More information can be had by calling 887-6637.

Pedigree Chart

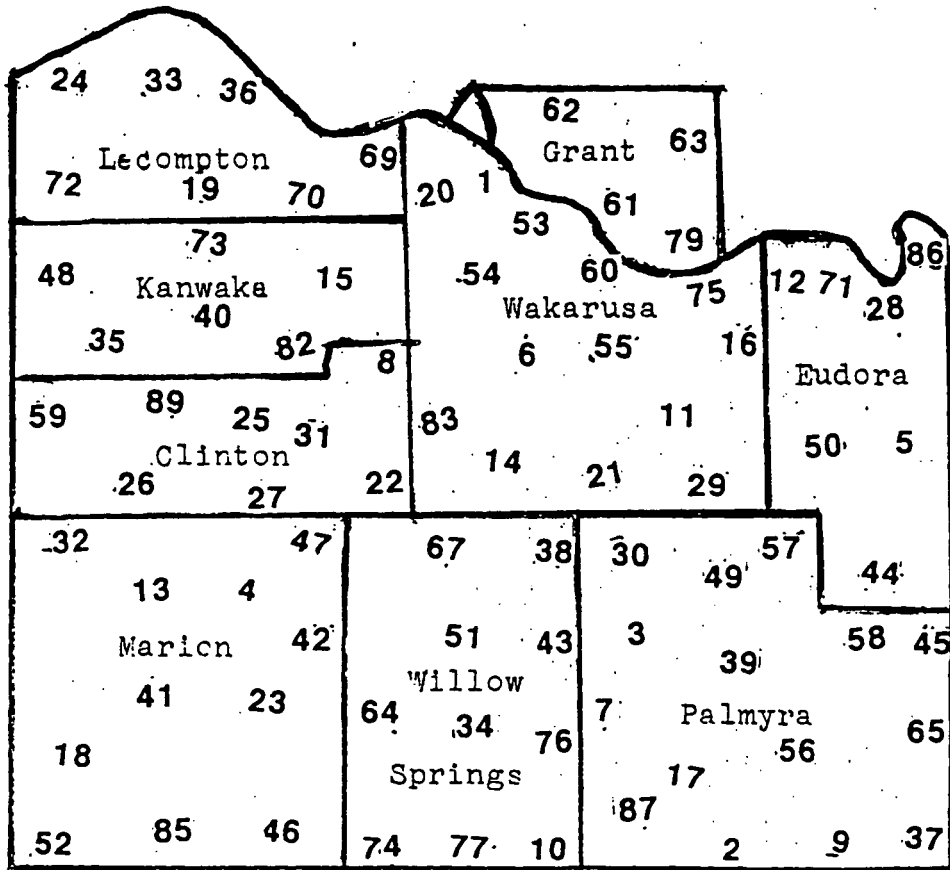
26 Dec 1999

Chart no. _____
 No. 1 on this chart is the same
 as no. _____ on chart no. _____



Prepared 26 Dec 1999 by:
 Jan Echer

DIRECTORY-DOUGLAS COUNTY PUBLIC SCHOOLS-1935-1936



Douglas County School Board Association
 President.....Francis G. Hughes
 Vice President.....Charles Banning
 Secretary-TreasurerL. G. McGee

Register of Deeds.....Harold Beck
 Coroner.....Dr. H. T. Jones
 Engineer.....E. E. Trueblood
 Health Officer.....Dr. H. P. Jones

Douglas County Teachers' Association
 President.....Mildred Brown
 Vice President Agnes Mary White
 Secretary.....Herbert Nunemaker
 Treasurer.....Wayne McMasters

COUNTY COMMISSIONERS
 First District.....Chris Schaake
 Second District.....Earl T. Black
 Third District, Chairman.....James F. Brass

Co. Board of Examiners, Harold C. Fisher, F. H. Olney, Nannie Gander

MEMBERS OF THE LEGISLATURE
 Senator

Truant Officer.....Mrs. Rachel Flory
 Red Cross Public Health Nurse.....Matie Neeley

Fifth District.....C. E. Friend
 Representatives

COUNTY OFFICERS

Treasurer.....A. M. Gardner
 Clerk.....U. S. G. Plank
 Attorney.....R. B. Stevens
 Superintendent.....Harold C. Fisher
 Sheriff.....Fred Vogler
 Clerk of District Court.....John Callahan
 Probate Judge.....L. H. Menger

Eleventh District.....George K. Melvin
 Twelfth District.....Carl Gerstenberger

OFFICIAL DIRECTORY

National and State, United States Officers

President, Franklin D. Roosevelt, salary \$75,000...
 New York
 Vice President, John D. Gardner, salary \$15,000....
 Texas

CABINET OFFICERS

State, Cordell Hull.....Tennessee
 Treasurer, Henry Morgenthau.....Pennsylvania
 War, George H. Dern.....Utah
 Attorney-General, Homer S. Cummings.....Con-
 necticut
 Postmaster-General, James A. Farley.....New York
 Navy, Claude A. Swanson.....Virginia
 Interior, Harold Ickes.....Illinois
 Agriculture, Henry Wallace.....Iowa
 Commerce, Daniel C. Roper.....South Carolina
 Labor, Frances Perkins.....New York
 (Salary of each, \$15,000)

SUPREME COURT OF THE UNITED STATES

Chief Justice, Charles Evans Hughes, salary
 \$20,000.....New York

The Associate Justices are: Harlan Fisk Stone,
 New York; Benjamin N. Cardozo, New York; William
 Van Devanter, Wyoming; James Clark McReynolds,
 Tennessee; Louis D. Brandeis, Massachusetts;
 George Sutherland, Utah; Pierce Butler, Minnesota
 Owen J. Roberts.

(Salary of each, \$20,000.)

MEMBERS OF CONGRESS

Senators

Arthur Capper.....Republican
 George McGill.....Democrat
 (Salary, \$10,000 and 20 cents Milage)

Representatives

First District, W. P. Lambertson.....Republican
 Second District, U. S. Guyer.....Republican
 Third District, Ed. W. Patterson.....Democrat
 Fourth District, Randolph Carpenter.....Democrat
 Fifth District, John M. Houston.....Democrat
 Sixth District, Frank Carlson.....Republican
 Seventh District, C. R. Hope.....Republican
 (Salary, \$10,000 and 20 cents milage)

President of Senate.....John D. Garner
 Speaker of House.....Byrns
 (Salary, \$15,000. Ratio of Representation,
 211,877)

U. S. DISTRICT COURT JUDGES

John C. Pollock.....Salary, \$6,000.
 Richard J. Hopkins.....Salary, \$6,000.

U. S. COMMISSIONER OF EDUCATION

John Ward Studebaker.....Iowa

STATE OFFICERS

Governor, Salary, \$5,000.....Alf M. Landon
 *Lieutenant Governor, Salary, \$900..... Charles
 Thompson

Secretary of State, Salary, \$3,000.....Frank J. Ryan
 Auditor, Salary, \$3,000.....Robb
 State Treasurer, Salary, \$3,000.....J. J. Rhodes
 Superintendent of Public Instruction,Salary
 \$3,000.....W. T. Markham
 Attorney General, Salary, \$4,000.....Clarence Beck
 Printer, Salary, \$3,000.....W. C. Austin
 Superintendent of Insurance, Salary, \$3,000.....

Chas. F. Hobbs

Bank Commissioner, Salary, \$4,000..... R. A. Haines
 Secretary of Agriculture, Salary, \$4,000.....

J. C. Mohler

*Lieutenant-Governor receives \$6.00 a day extra
 during sessions of Legislature.

STATE SUPREME COURT

Chief Justice.....Rosseau A. Burch

The Associates Justices are: Hugh Wedell, Wm.
 Easton Hutchinson, John S. Dawson, W. W.
 Harvey, Wm. A. Smith, Walter G. Thiele.

Salary of each \$6,000.

Clerk.....Earl E. Clark

The date below is given in the order following:
 District number, district name, district valuation (less
 intangible), mill levy; director's name and address;
 clerk's name and address; treasurer's name and
 address; Teacher's name and address; kind of
 certificate; years taught; salary and first weeks
 enrollment.

DISTRICT SCHOOLS

1. **LAKEVIEW**-\$342,962; 1.52
 Albert Brune, R. 1, Lawrence
 Owen Mitchell, R. 1, Lawrence
 Ida Hodson, R. 1, Lawrence
Hilda Jane Hunter, R. 1, Lawrence: Life; 1;
 \$60.00; 19
2. **SPRING CREEK**-\$153,820; 4.19
 Mrs. Frank Jardon, R.3, Baldwin
 A. E. Preston, R.3, Baldwin
 Claude E. Yackle, Wellsville
Mrs. Geo. Marquardt, Baldwin; 1st. Grade;
 14; \$60.00; 8
3. **STONY POINT**-\$137,351; 2.48
 H. H. Smith, R.3, Baldwin
 L. M. Craig, R.3, Baldwin
 H. E. Roe, R. 1, Vinland
Marian J. Madl, R. 3, Baldwin; 3 yr. St.; 2;
 \$55; 15

4. **WEYBRIGHT**-\$137,030; 3.00
Asa M. Postma, Lone Star
Clyde B. Hoover, R. 2, Richland
Chas. Weybright, Lone Star
Herschel Hemphill, Lone Star;
2nd. Grade; 3; \$62; 12
5. **HESPER**- \$321,542; 2.76
Mrs. Hazel Harris, R. 1, Eudora
Raymond Stanley, R. 1, Eudora
E. H. Grob, R. 2, Eudora
Irene Neis, R. 1, Eudora, N. Tr.; 6; \$80; 18
6. **NUMBER SIX** - \$476, 929; 2.59
Cleveland Dunnigan, R. 6, Lawrence
L. O. Armstrong, R. 6, Lawrence
W. N. Allison, R. 6, Lawrence
Johanna Griffiths, 1016 Ky., Lawrence; N.
Tr.; 10; \$87.50; 24
7. **HOPEWELL** - \$300,054; 1.82
R. E. Merchant, Baldwin
Mrs. Rena Vaughn, R. 2, Baldwin
Geo. W. Reynolds, Baldwin
Frances E. Bailey, R. 2, Baldwin; 3 yr. life;
2; \$62.50; 14
8. **SIGEL** - \$268,089; 2.00
Lee Cox, R. 4, Lawrence
Geo. W. Strahan, R. 4, Lawrence
Wm. M. Johnson, R. 4, Lawrence
Eunice O'Brien, R. 4, Lawrence; Life; 8;
\$55; 16
9. **BLACK JACK** - \$222,478; 6.00
Ralph I. Kalb, Wellsville
John F. Neis, Wellsville
John L. Hays, Wellsville
Enice Hammond, Vinland; 3 yr. St.; 2; \$60;
14
10. **OAKDALE** - \$147,783; 3.92
C. W. Detwiler, R. 1, Baldwin
Jerald H. Hobson, Baldwin
Millard B. Jackson, Baldwin
Ethel E. Deay, Vinland; 3 yr. St.; 3; \$60; 6
11. **WALNUT GROVE** - \$244,479; 2.50
E. L. Brown, R. 2, Lawrence
Chas. L. Shirar, R. 2, Lawrence
Mrs. Elmo Garrett, R. 2, Lawrence
Mrs. Clarine Beyer, 712 La., Lawrence;
Life; \$60; 6
12. **KAW VALLEY** - \$369, 934; 4.36
Francis G. Hughes, R. 2, Lawrence
Eugene McCabria, R. 1, Eudora
G. E. Schaake, R. 2, Lawrence
Josephine Foster, 1645 Ala., Lawrence;
N. Tr.; 4; \$75; 9
13. **ROCK CREEK** - \$109,210; 6.00
August Schalbar, R. 2, Overbrook
Robert Pardee, R. 2, Richland
Herman B. Schellhorn, Overbrook
Leatha Dillon, R. 2, Richland; 3 yr. St.; 1;
\$50; 12
14. **PLEASANT VALLEY** - \$193,933; 3.78
T. C. Richardson, R. 6, Lawrence
E. H. Illian, R. 6, Lawrence
Vernon W. Garratt, R. 6, Lawrence
Mae Kennison, 204 W. 12th.; Lawrence;
Life; 2; \$75; 19
15. **KANWAKA** - \$260,427; 2.60
Olin Button, R. 1, Lawrence
Carl Hird, R. 1, Lawrence
Frank W. Houk, R. 2, Lecompton
Marguerite Nunemaker, R. 5, Lawrence
1st Grade; 4; \$80; 28
16. **FRANKLIN**- \$189,907; 3.46
Arthur C. Oatman, R. 2, Lawrence
J. D. Martin, R. 2, Lawrence
W. K. Eisele, Lawrence
Erma Allison 643 Ind. Lawrence; Life;
7; \$60; 24
17. **BALDWIN** - \$1,078,634; 13.33 (Bonds &
Interest 5.63)
Wilson Counts, Baldwin
Mrs. A. A. LeMaster, Baldwin
Harold Guest, Baldwin
J. W. Wellborn, Supt.; Life; 17; \$170;
Grade-151; High-101
Nannie Gander, Prin. H. S., Baldwin;
Life; 17; \$125
Ethel Watkins, Baldwin; Life; 16, \$ 120.
Frances E. Lewis, Baldwin; Life; 4 1/2;
\$100.
Helen Deel, Baldwin; 3 yr, Life; 3; \$105.
Hubert Jackson, Baldwin; Life; 3; \$110.
W. V. Potts, Baldwin; Life; 10; \$120.
Madge Reynolds, Baldwin; Sp. Music; 14;
\$110.
Warren W. Wilcox, Baldwin; 3 yr, 3; 5;
\$120.

- Ethel Murray**, Prin. G. S., Baldwin; 1st. Grade; 17; \$95.
Cainie W. Steele, Baldwin; El. Life; 13, \$90.
Florence H. Strong, Baldwin; Per. Jr. Hi.; 11; \$90.
Phebe B. Gates, Baldwin; 3 yr. Life; 3, \$75.
Lucy E. Gordon, Baldwin; El. Life; 9; \$90.
Jessie K. Fenton, Baldwin; Life; 12; \$90.
Arietta Brown, Baldwin; 3 yr. Life; 2; \$75
Anna E. Lewis, Baldwin; 3 yr, 3; 13; \$90.
18. **ENTERPRISE**-\$257,889; 5.50
H. N. Desque, Overbrook
George Raible, Overbrook
J. P. Murphy, Overbrook
Mary Ross, Overbrook; 3 yr. Life; 6; \$65; 14
19. **YOUNG**-\$124,378; 3.82
Frank Walter, Lecompton
Sam Dark, Jr., R. 1, Lawrence
Pete Bahnmaier, R.1, Lecompton
Jessie Norwood, Lecompton; 2nd. Grade
2; \$50. 11
20. **BARKER**- \$146, 086; 5.64
Ambrose Bigsby, R. 1, Lawrence
Barr Gorrill, R. 1, Lawrence
Grant Johnson, R. 1, Lawrence
Mrs. Ruth Sawyer, R. 1, Lawrence; Per.
El.; 4; \$65; 19
21. **FAIRVIEW**-\$373,726; 2.27
S. T. Griffin, R. 2, Lawrence
Will Walker, R. 2. Lawrence
G. W. Hungsinger, R. 6, Lawrence
Mrs. Gladys Griffiths, 1425 N. J.
Lawrence; Life; 3 \$65.; 22
22. **WASHINGTON CREEK**-\$188, 858; 3.73
Hugo Schellhorn, R. 6, Lawrence
Fred Gray, R. 6, Lawrence
O. P. McNees, R. 6, Lawrence
Mary Anderson, 1340 Vt. Lawrence, Life;
4; \$65.; 15
23. **GLOBE**- \$225,506; 4.29
Walter G. Oehrle, R. I, Overbrook
J. N. Lyon, R. 1, Overbrook
Everett Kingery, Overbrook
Katherine Brass, Overbrook; Per. El.; 4;
\$70; 14
24. **GREENWOOD VALLEY**-\$252,675; 4.13
J. W. Geelan, Lecompton
Geo. H. Simmons, R. 1, Lecompton
B. O. Kellogg, Lecompton
Louise Clarke, Lecompton, 3 yr. St.; 2
; \$75.; 15
25. **CLINTON**-\$155,134; 4.42
Harry E. Unger, R. 4, Lawrence
Fred Torneden, R. 2, Richland
Walter Kampschroeder, Richland
Edith Moses, K. U. Lawrence; 1st. Grade;
17; \$70; 29
26. **OLD BELVOIR**-\$155,056; 4.45
Otis C. Heine, R. 2, Richland
J. B. Alexander, Richland
Pearl Thurber, R. 2, Richland
Loretta Shaw, R. 2, Richland; 2nd Grade;
10; \$70. 13
27. **APPLE PIE**-\$122, 960; 5.86
Mrs. Dorothy Fishburn, Lone Star
Fred Flory, Lone Star
Elbert Goff, Lone Star
Elizabeth Dunn, R. 6, Lawrence; Life; 3;
\$55.; 18
28. **EUDORA**-\$800,167; 6.30
Oscar Lathholz, Eudora
O. E. Westerhouse, Eudora
Fred Walker, Eudora
Gilmore Nichols, Prin, Eudora; Life; 7;
\$140; 97
Mary Miller, Eudora; Life; 8 \$90.
Bessie Ehrlich, Eudora, Life; 6; \$80.
Edna Perry, Eudora; Life; 8; \$90.
29. **BLUE MOUND**-\$279,131; 1.98
Earl S. Cowles, Vinland
Oscar T. York, Vinland
A. F. Weeks, R. 2, Lawrence
Esther M. Eckman, Vinland; 2nd Grade;
3; \$65.; 17
30. **WELCOME**-\$191,269; 2.33 (Bonds &
Interest .47)
Clifford E. Cooper, Vinland
Carbon L. Penny, R. 6, Lawrence
Mrs. Maggie Pratt, Vinland
Nellie D. Perkins, R.1, Eudora:
1st Grade: 27; \$52.50: 17

31. **BLOOMINGTON**-\$116,140; 4.13
Mrs. O. A. Bradley, R.4, Lawrence
Lewis Simpson, R.4, Lawrence
Arthur Jensen, R. 4, Lawrence
Laura Lou Miller, 538, Ind., Lawrence; 3
yrd. 3: 1: \$55.; 15
32. **TWIN MOUND**-\$218,483; 3.78
George Simmons, Richland
Elmer Thurber, Richland
Geo. Sullivan, Richland
Cordella Penn, Richland; Life; 15: \$60.; 8
33. **GLENN**-\$319,890; 3.40
Starr Glenn, Lecompton
Howard Sanford, Lecompton
J. E. Matney, Lecompton
Harold Summers, Lecompton, N. Tr.;
8; \$75; 20
34. **UNION**-\$152,205; 4.40
P. K. Beck, Baldwin
Roy Schwalm, R. 1, Baldwin
Charlie Pitts, Baldwin
Mrs. F. E. Ross, Baldwin; Permanent; 11
\$60; 13
35. **MOUND**-\$161,081; 4.27
August Walter, Lecompton
D. E. Rake, R. 1, Richland
T. F. Connole, Richland
Sara R. Slavens, Lecompton; 3 yr. Life;
3; \$60.; 13
36. **LECOMPTON**-\$450,575; 8.04
Dr. C. H. Maust, Lecompton
Ralph Traxler, Lecompton
A. Hildenbrand, Lecompton
Clarence Smith, Prin. Lecompton; 1st.
Grade; 20; \$75; 75
Naomi Edwards, Lecompton; 3 yr. Life; 5
1/2; \$65.
Teresa Anderson, Lecompton; Per. Jr
. Hi.; 5; \$65.
Dorothy Porterfield, Lecompton; 3 yr.
Life; 2: \$65.
37. **VESPERTINE**-\$259,700; 2.61
Carl Hughes, Wellsville
Ralph Mignet, Wellsville
A. F. Neis, Wellsville
Eula Secrest, Edgerton; Life; 11; \$60; 11
38. **PLEASANT GROVE**-\$163,334; 5.65
Ed Deay, R.6, Lawrence
Mrs. Jack Dillon, R. 6, Lawrence
John Daggett, R. 6, Lawrence
Lois Pontius, 605 Ala. Law; Per. Jr. Hi.; 9;
\$80.; 20
39. **COAL CREEK**-\$224,829; 5.19
John Rockhold, Baldwin
Robert Randel, Baldwin
Clarence Hagerman, Vinland
Margaret Everley, Vinland; 3 yr. st.; 1;
\$45; 29
Lorene Williams, Vinland; 3 yr. St.; 1; \$45.
40. **YARNOLD**, \$188,478; 1.80
Theodore Buchheim, R. 1, Lawrence
Harry Wulfkuhle, R. 2, Lecompton
J. I. Wilson, Lecompton
Agnes Stevens, R. 1, Lawrence; Per. Jr.
Hi; 10; \$50; 18
41. **BALDWIN**-175,275; 3.41
Fred Winters, Overbrook
G. A. Fawl, Overbrook
W. A. Simon, Overbrook
Gordon Melgren, Overbrook; 3 yr. St.; 2;
\$60; 16
42. **COLYER**, \$138, 696; 1.62
Otto Hack, Baldwin
Frank E. Lutz, Lone Star
W. H. Hornberger, Lone Star
Marzella Dwyer, Lone Star; 3 yr. St.; 1;
\$50; 17
43. **HIGH PRAIRIE**-\$145,663; 2.01
E. S. Heaston, R. 2, Baldwin
Loren M. Williams, R. 5, Baldwin
D. W. Johanning, R. 2, Baldwin
Agnes Laptad, R. 3, Lawrence; 3 yr. St.;
12 1/2; \$60; 18
44. **ROSCOE**-\$248,717; 2.57
Ellen Melville, Eudora
Earnest Milburn, Eudora
Homer H. Gerstenberger, Eudora
Nora Vitt, Eudora; N. Tr.; 13; \$75; 6
45. **PLEASANT OAK**-94,095; 5.34
Philip Brecheisen, Eudora
Chas. Baecker, Edgerton

- Teddy Brecheisen, Eudora
Marcy Bunnell, Edgerton; 3 yr. St.; 1;
 \$50.; 8
46. **BRUBAKER**-\$132,019; 6.00
 Orval N. Baker, Overbrook
 Mrs. Alice Crawford, Overbrook
 H. H. Fishburn, Overbrook
Wayne McMasters, Overbrook; 1st. Grade;
 4; \$65.; 18
47. **LONE STAR**-\$178,204; 3.81
 J. D. Flory, Lone Star
 Rudolph Dietz, Lone Star
 F. J. McKinney, R. 6, Lawrence
Mabel Shaw, R. 6, Lawrence; 3 yr. 3; 12;
 \$75; 25
48. **DEER CREEK**-\$282,977; 1.99
 Albert Hildenbrand, Lecompton
 Elmer Nichols, R. 1, Lecompton
 Henry Deister, Lecompton
Carrie Hanna, Lecompton; Per. Jr. Hi.; 15;
 \$70; 34
49. **VINLAND**-\$299, 852; 2.59
 W. E. Hoskinson, Vinland
 H. W. Miskimen, Vinland
 F. W. Cleland, Vinland
Esther Hird, Vinland; 3 yr.St.; 5; \$75; 21
50. **BELLVIEW**-\$326,050; 1.97
 Claude Landon, R. 3, Eudora
 Mrs. Grace Hadl, R. 2, Lawrence
 Clifford Ulrich, R. 1, Eudora
Milton Janicke, R. 3, Lawrence; 3 yr. St.; 4;
 \$75; 27
51. **WILLOW SPRINGS**-\$136,586; 4.41
 F. A. Deay, R. 2, Baldwin
 E. E. Churchbaugh, R. 5, Baldwin
 D. F. Beeghley, R. 2, Baldwin
Olive Brown, R. 3, Baldwin; N. Tr.; 9; \$75; 19
52. **CARGY**-\$174,085; 4.16
 Mrs. Eva Rundle, Overbrook
 Lawrence Steele, Pamona
 Marion Dodder, Overbrook
Ruth Davis, Overbrook; 2nd. Grade; 4;
 \$52.50; 16
53. **RIVERSIDE**-\$406,408; 1.80
 C. A. Spray, R. 1, Lawrence
 B. L. Hills, R. 1, Lawrence
 M. G. Robertson, R. 1, Lawrence
Mrs. Mildred Wilson, 342 Johnson Ave.,
 Lawrence; Life; 14; \$80; 16
54. **BRACKETT**-\$339, 292; 2.37
 H. D. Howland, Lawrence
 Wm. H. Martin, R. 4, Lawrence
 Wilbur Jeffries, Lawrence
Mildred Brown, 1312 R. I., Lawrence; 1st.
 Grade; 10; \$75; 18
55. **INDIA**-\$387,900; 4.65
 C. B. Hosford, Lawrence
 C. J. Knox, R. 2, Lawrence
 A. T. Hodges, R. 2, Lawrence
Emma Semple, 901 Ind., Lawrence; Per. Jr.
 Hi.; 7 1/2; \$98; .28
Margaret Fritzel, W. 23rd, Lawrence; 3 yr.
 Life; 1; \$50.
56. **PROSPECT**-\$148,437; 3.10 (Bonds &
 Interest 1.41)
 Martin Rohe, Baldwin
 J. F. Madl, R. 3, Baldwin
 Mrs. Ocia Kretsinger, Baldwin
Moleta Laughlin, R. 3, Baldwin; 3 yr. St.; 1;
 \$50; 12
57. **HARMONY**-\$177,988; 2.75
 Dale Crady, R. 1, Vinland
 H. N. Hoskinson, Vinland
 Clyde Nichols, Eudora
Mrs Argel Cochrun, R. 2, Lawrence; 2nd.
 Grade; 9; \$72.50; 16
58. **CLEARFIELD**-\$97,033; 7.50
 Wesley Deckwa, Eudora
 Dan. S. Setzer, R. 3, Baldwin
 W. W. Rodewald, Eudora
Katherine Kelley, Baldwin; 3 yr. Life; 2;
 \$62.50; 14
59. **WEST FAIRVIEW**-\$126,204; 4.68
 Albert Houk, Richland
 Dewey Benander, Richland
 H. L. Fitzpatrick, Richland
Glenn T. Colburn, R. 1, Richland; 2nd
 Grade; 8; \$55; 7

60. **CITY OF LAWRENCE**
61. **WHITE**-\$357, 110; 3.41 (Bond & Interest 1.81)
Roscoe Pine, R. 5, Lawrence
L. G. McGee, R. 3, Lawrence
E. W. Heck, R. 3, Lawrence
Agnes Mary White, 717 R. 1. St. Lawrence;
Per. Jr. Hi; 9; \$95; 17
62. **BURNETTE**-\$586,236; 1.96
A. C. Schaake, R. 3, Lawrence
Robert Laptad, R. 3, Lawrence
Julian H. Boener, R. 3, Lawrence
Ann Williams, 117 E. 11th, Lawrence; N.
Tr.; 11; \$70; 26
Vivian Shields, 1637 N. H., Lawrence; 1st
Grade; 6 1/2; \$70.
63. **OAK RIDGE**-\$321,933; 2.85
H. G. Van Neste, R. 5, Lawrence
Will H. Hayden, R. 5, Lawrence
F. H. Leonhard, R. 3, Lawrence
Jennie Sowash, R. 3, Lawrence; Life; 31;
\$75; 21
64. **CENTRAL**-\$189,042; 2.76
Andrew Elm, Baldwin
J. W. Breithaupt, R. 1, Baldwin
Lucas Fleer, Baldwin
Velma Deay, Vinland; 3 yr. St.; 1; \$60; 19
65. **ADALINE**-\$95,745; 6.00
Henry Brecheisen, Eudora
Dan H. Sturm, Eudora
Herbert H. Lawrenz, Eudora
Herbert Nunemaker, Eudora; 2nd Grade;
2; \$51; 7
67. **COLUMBIA**-\$119,428; 4.89
S. J. Markley, R. 2, Baldwin
E. H. Sanders, Lone Star
Chas. Brohammer, R. 2, Baldwin
Sylvia Shuler, R. 2, Baldwin; 2nd Grade; 1;
\$50; 8
69. **CROWDER**-\$232,047; 3.12
Jack Grimes, R. 1, Lawrence
L. H. Rogers, R. 2, Lecompton
J. M. Crowder, R. 1, Lawrence
Helen Norwood, Lecompton; 3 yr. St.; 5;
\$70; 16
70. **WINTER**-\$134,120; 5.27
Newt Hamlin, Lecompton
C. B. Winter, Lecompton
W. R. Colman, R. 1, Lawrence
Alice Mitchell, Lecompton; 3 yr. St.; 2;
\$55; 15
71. **FARMLAND**-\$456,371; .43
C. C. Perkins, Eudora
Ralph Davis, Eudora
J. W. Strong, Eudora
Bessie Brown, 1645 Ala. Lawrence; El.
St.; 12; \$75; 13
72. **BIG SPRINGS**-\$186,446; 4.18 (Bonds &
Interest 4.51)
C. W. Swecker, Lecompton
R. F. Buck, R. 2, Lecompton
Gus Hartman, Lecompton
Opal Shaw, R. 4, Lawrence; Life; 11; \$75;
25
73. **JONES**-\$158,777; 4.45
Samuel F. Buchheim, R. 1, Lawrence
J. F. Brass, R. 1, Lawrence
Theo. F. Walter, R. 1, Lawrence
Dorothy E. Williams, R. 1, Lawrence; 2nd
Grade; 1; \$45; 10
74. **RANGE LINE**-\$108,880; 3.62
John S. Watts, Baldwin
Charley Elm, R. 1, Baldwin
H. O. Gibson, Baldwin
Neoma Neis, R. 1, Baldwin; 3 yr. St.; 1; \$50
7
75. **OAK HILL**-\$317,989; 1.92
J. H. Corel, R. 2, Lawrence
R. R. McFarland, R. 2, Lawrence
W. E. Koehring, R. 2, Lawrence
No School - Pupils sent to Lawrence
76. **INDEPENDENCE**-\$170,376; 4.57
Charley H. Gale, Baldwin
B. L. Taul, R. 2, Baldwin
H. G. Seele, Baldwin
Marie Doherty, Baldwin; 1st. Grade; 6;
\$70; 16
77. **EXCELSIOR**-\$125,793; 6.00
Roy E. Shuler, R. 1, Baldwin
Glenn Flora, R. 1, Baldwin

G. Gastrock, Baldwin
Buena Vista Morgan, R. 1, Baldwin; 3 yr. 3;
 1; \$53; 26

79. **BISMARK**-\$398,664; 2.74
 F. D. Walter, R. 5, Lawrence
 G. E. Robinsin, R. 5, Lawrence
 Elmer B. Wise, R. 5, Lawrence
Mildred Springer, 939 1/2 Mass.,
 Lawrence; Life; 10; \$75; 7
82. **BARBER**-\$130,993; 3.26
 Theodore R. Wiggins, R. 1, Lawrence
 Mrs. Chas. Coffman, R. 1, Lawrence
 R. M. Harrell, R. 1, Lawrence
Mary N. Smith, Lecompton; 3 yr. St.; 1;
 \$52.50; 11
83. **MODEL**-\$167,256; 4.73
 A. E. Holcom, R. 6, Lawrence
 C. E. Banning, R. 6, Lawrence
 Geo. Lown, R. 4, Lawrence
Frances Metcalfe, R. 5, Lawrence; 1st.
 Grade; 12; \$85; 29
84. **BELVOIR**-\$152,515; 4.67
 Harry Murphy, Richland
 M. D. Connole, R. 1, Richland
 Fred W. Lobb, R. 1, Richland
Fay Brown, R. 1, Richland; 1st. Grade; 17;
 \$70; 11
85. **CENTENNIAL**-\$170,418; 3.36
 J. H. Button, R. 1, Overbrook
 O. A. Powell, Overbrook
 C. E. Simmons, Overbrook
Everett Simmons, Overbrook; 3 yr. St.; 2;
 \$52.50; 16
86. **WEAVER**-\$285,430; 1.40
 L. L. Kindred, Eudora
 Gideon Neis, Eudora
 Floyd Broers, Eudora
Maxine Schellack, Eudora; 3 yr. St.; 2;
 \$70; 8
87. **PRAIRIE CITY**-\$330,266; 2.67
 I. N. Rutherford, Baldwin
 W. E. Simpson, R. 1, Baldwin
 Earnest Butell, Baldwin
Gertie Deay, Vinland; Per. Jr. Hi.; 9; \$80; 17

RURAL HIGH SCHOOLS

1. **VINLAND**-\$864,375; 5.00 (Bonds & Interest.
 .87)
 Roy Jameson, Vinland
 Seth Fenton, Vinland
 H. A. Cowles, Vinland
E. R. Button, Prin, Vinland; Life; 12;
 \$166.66; 48
Mrs. Gwen Janzen, Vinland; Life; 8; \$100.
Nora L. Baird, Vinland; Life; 6; \$90.
Fred Ghrist, Baldwin; 3 yr. Life; 1; \$95.
2. **EUDORA**-\$2,506,429; 4.46
 W. W. Gerstenberger, Eudora
 Dr. C. B. Johnson, Eudora
 Benjamin Neis, Eudora
John Steiner, Prin., Eudora; Life; 12;
 \$156.75; 95
Mabel Campbell, Eudora; Life; 11; \$112.92
Clifford Olander, Eudora; Life; 4; \$112.92
Beatrice Mowrey, Eudora; Life; 13; \$93.75
Paul E. Blackwood, Eudora; 3 yr. Life; \$105.
C. L. Ruthrauff, Eudora; Life; 10; \$120.42
Leota L. Wagner, Eudora; 3 yr. Life; 3;
 \$93.75
3. **OVERBROOK JOINT RURAL HIGH
 SCHOOL**
4. **LECOMPTON**-\$1,623,333; 2.21 (Bonds &
 Interest 1.60)
 W. C. McClanahan, Lecompton
 Rev. F. W. Bertschinger, Lecompton
 Fred H. Nace, Lecompton
V. L. Cramer, Prin, Lecompton; Life; 13;
 \$163.79
Oma Louise Bishop, Lecompton, 3 yr. Life;
 1; \$100.
Katharine Weatherby, Lecompton; Life; 5;
 \$100.
Harold J. Smith, Lecompton; Life; 6; \$100.

SUMMARY

ONE TEACHER SCHOOLS

Number teacher, 74	Average Salary, \$64.81
Enrollment, 1179	Average Enrollment per teacher, 16

TWO TEACHER SCHOOLS

Number Teacher, 6	Average Salary, \$63.00
Enrollment, 83	Average enrollment per teacher, 14

**BEING CREATIVE WITH
TROUBLESOME KIN**

GRADED SCHOOL
Number teachers, 16
Enrollment, 323

Average salary, \$85.00
Average enrollment per
teacher 20

HIGH SCHOOLS
Number teachers, 24
Enrollment, 325

Average salary, \$116.25
Average enrollment per
teacher, 13 1/2

TOTALS

Elementary teachers 96	Elementary enrollment	
		1585
High School teachers <u>24</u>	High School enrollment	
		<u>325</u>
Total	120	1910

To the Citizens of Douglas County:

In the interest of economy your school directory is coming to you in different form this year. I hope the saving will more than balance the perfection and convenience found in our previous booklets.

Errors are inevitable. We cordially solicit your help in correcting them.

Sincerely
Harold C. Fisher
County Superintendent

You are working on your family genealogy and for sake of example, let's say that your great-great uncle, Remus Starr, a fellow lacking in character, was hanged for horse stealing and train robbery in Montana in 1889.

A cousin has supplied you with the only known photograph of Remus, showing him standing on the gallows.

On the back of the picture are the words:

"Remus Starr: Horse thief, sent to Montana Territorial Prison, 1885. Escaped 1887, robbed the Montana Flyer six times. Caught by Pinkerton detectives, convicted and hanged, 1889."

Pretty grim situation, right? But let's revise things a bit. We simply crop the picture, scan in an enlarged image and edit it with image processing software so that all that is seen is a head shot.

Next, we rewrite the text:

"Remus Starr was a famous cowboy in the Montana Territory. His business empire grew to include acquisition of valuable equestrian assets and intimate dealings with the Montana railroad.

Beginning in 1885, he devoted several years of his life to service a government facility, finally taking leave to resume his dealings with the railroad. In 1887, he was a key player in a vital investigation run by the renowned Pinkerton Detective Agency. In 1889, Remus passed away during an important civic function held in his honor when the platform upon which he was standing collapsed."

Dues paid now will be good through December 2000. Our dues year runs from January through December.

MEMBERSHIP APPLICATION

Name _____ Maiden Name _____

Street _____ Apt. # _____ Home Phone _____

City _____ State _____ Zip _____ Work Phone _____

E-Mail address _____ Renewal New

Would you be willing to receive the Pioneer by e-mail? yes no

Surnames you are searching _____

Amount enclosed _____ (Rates Individual \$15.00 per year, Family \$17.00 per year)

Mail to: DCGS
PO Box 3664
Lawrence, KS66046-0664

Make checks payable to: DCGS

Surname Index Volume 22, no.1 & 3

Adam 5,6	Brune 17	Craig 17
Alexander 19	Buchheim 20,22	Cramer 23
Allison 18	Buck 22	Crawford 21
Anderson 19,20	Bunker 5	Crosby 6
Armstrong 18	Bunnell 21	Crowder 22
Austin 6,17	Bunton 5,6	Cummings 17
	Burch 17	
Back 16	Burchill 2	Daggett 20
Baecker 20	Burke 7	Dark 19
Bahnmaier 9	Butell 23	Davis 5,7,8,21,22
Bailey 18	Butler 17	Dawson 17
Baird 23	Button 18,23	Dean 5
Baker 21	Byrns 17	Deay 18,20,21,22,23
Banks 6		Deckwa 2
Banning 16,23	Callahan 16	Deel 18
Barber 6	Camp 7	Deister 21
Bauer 15	Campbell 23	Delderfield 7
Beam 15	Capp 6	Dennis 15
Beck 17,20	Capper 17	Dern 17
Beeghley 21	Carlson 17	Desque 19
Begley 7	Carpenter 17	Detwiler 18
Beisecker 5,6	Case 4	Dicker 7
Benender 21	Chase 5	Dietz 21
Bertschinger 23	Churchbaugh 21	Dillon 18,20
Beyer 18	Clark 6,7,10,17	Dodder 21
Bigsby 19	Clarke 9	Doherty 22
Birch 7	Cleland 2	Dunlop 7
Bishop 23	Cochrun 21	Dunn 19
Black 16	Coffin 5,6	Dunnigan 18
Blackwood 23	Coffman 23	Durning 9
Boerner 22	Colburn 21	Durow 13,14,15
Bolton 7	Coldham 7	Dwyer 20
Bovee 2	Colman 6	Dyer 5
Boyer 7	Colman 22	
Bradley 20	Connole 20,23	Earle 5
Bradney 7	Conway 9	Early 8
Brandeis 17	Cook 7	Eaton 8
Brass 16,19,22	Cooper 19	Eckman 19
Brecheisen 20,21,22	Cordoza 17	Edwards 20
Breithaupt 22	Corel 22	Ehrlich 19
Brennan 5	Counts 18	Eisele 18
Broers 23	Court 5	Elm 22
Brohammer 22	Cowles 19,23	Everley 20
Brown 5,16,18,19,21, 22,23	Cox 18	
	Craday 21	Falley 7

Farley 17
Fawl 20
Fenton 19,23
Fishburn 19,21
Fisher 16,24
Fitzpatrick 21
Fleer 22
Flory 16,19,21,22
Fogler 6
Foster 5,18
Franklin 6
Freeman 5
Friend 16
Fritzel 21
Fuller 8

Gale 22
Gander 16,19
Gardner 5,7,16
Garner 17
Garratt 18
Garrett 18
Gastrock 23
Gates 19
Gebler 7
Geelan 19
Gerstenberger 16,20,23
Ghrist 23
Gibson 8,22
Glenn 20
Goff 19
Gordon 19
Gormley 4
Gorrill 19
Grafton 5
Grant 5
Gray 19
Gregory 15
Griffin 19
Griffis 18
Griffiths 19
Grimes 22
Grob 18
Gruver 10
Guest 18

Guyer 17

Hack 20
Hackett 8
Hadl 21
Hagerman 20
Haines 17
Hamlin 22
Hammond 18
Hanna 21
Harrell 23
Harris 18
Hartman 22
Harvey 17
Hayden 22
Hays 18
Heaston 20
Heck 22
Heine 19
Hemphill 18
Henry 12
Hereford 9
Hicks 5
Hildenbrand 20,21
Hills 8,21
Hird 18,21
Hobart 5
Hobbs 17
Hobson 18
Hodges 21
Hodson 17
Holcom 23
Hoover 18
Hope 17
Hopkins 6
Hopkkins 17
Hornberger 20
Hosford 21
Hoskinson 21
Houk 18,21
Houston 17
Howey 15
Howland 21
Hughes 16,17,18,20
Hull 17

Humphrey 6
Hungsinger 19
Hunter 17
Hussey 5,6
Hutchinson 17
Hutton 8

Ickes 17
Illian 18

Jackson 18
Jameson 23
Janicke 21
Janzen 23
Jardon 17
Jeffries 21
Jensen 20
Johanning 20
Johnson 8,18,19,23
Joliffe 7
Jones 6,16

Kalb 18
Kampschroeder 19
Keilman 5,6
Kelley 21
Kellogg 19
Kempthorne 2,3
Kennison 18
Kindred 23
Kingery 19
Knox 21
Koehring 22
Krause 11
Kretsinger 21

Lambertson 17
Landon 17,21
Laptad 20,22
Lathholz 19
Laughlin 2
Lawrenz 22
Lawton 8
Leffew 11
LeMaster 18

Leonhard 22
Lewis 5,18,19
Leynse 8
Libby 8
Lindenberger 6
Lobb 23
Lown 23
Loyd 8
Lutz 20
Lyon 9

MacLysaght 8
Madl 17,21
Magee 8
Markham 17
Markley 22
Marquardt 17
Martin 8,18,21
Mathews
Matney 20
Maust 20
McCabria 18
McClanahan 23
McFarland 22
McGee 16,22
McGill 17
McKinney 21
McLees 15
McMasters 16,21
McNealy 9
McNees 19
McReynolds 17
Meehan 8
Melgren 20
Melville 20
Melvin 16
Menger 16
Merchant 18
Metcalf 23
Mignet 20
Milburn 20
Miller 19,20
Miskimen 21
Mitchell 17,22
Mohler 17

Moore 6
Moran 6
Morgan 23
Morgenthau 17
Morrison 8
Moses 19
Mosher 5
Mott 5
Mowrey 23
Murphy 19,23
Murray 19

Nace 23
Nation 6
Neeley 16
Negles 8
Neis 18,20,22,23
Newell 4
Newlin 5
Nichols 19,21
Nichols 21
Norwood 19,22
Noyes 8
Nunemaker 16,18,22

Oatman 18
O'Brien 18
Oduirnin 9
Oehrl 19
Olander 23
Olney 16

Paddock 5
Palmer 5
Pardee 18
Patterson 17
Penn 20
Penny 19
Perkins 17,19,22
Perry 5,9,19
Phillips 6
Pine 9,22
Pinkham 6
Pitts 20
Plank 16

Pollock 17
Pontius 20
Porter 9
Porterfield 20
Postma 18
Potts 18
Powell 23
Pratt 19
Preston 17

Quantrill 6

Raible 19
Rake 20
Randel 20
Reed 4
Reynolds 18
Rhodes 6
Richardson 18
Ricketts 5,6
Robb 17
Robertson 21
Robinson 23
Robotti 8
Rockhold 20
Rodewald 21
Roe 17
Rogers 22
Rohe 21
Roosevelt 16
Roper 17
Ross 6,19,20
Rundle 21
Rutherford 23
Ruthrauff 23
Ryan 17

Sackrider 15
Sanders 22
Sanford 20
Savage 5
Sawyer 19
Schaake 16,18,22
Schalbar 18
Schelhorn 18

Schellack 23
Schellhorn 19
Schwalm 20
Scott 9
Secrest 20
Seele 22
Sells 15
Selzer 12
Semple 21
Shaw 19,21,22
Sheppard 6,9
Sherman 5,9
Shields 22
Shirar 18
Shuler 22
Shurtleff 9
Siewald 3
Simmons 19,20,23
Simon 20
Simpson 23
Sims 9
Simson 20
Slavens 20
Smith 17,20,23
Soule 8
Spencer 5,14
Spray 21
Springer 23
Stackpole 6,9
Stanley 18
Starbuck 5
Starr 24
Steele 19,21
Steiner 23
Stenton 9
Stevens 16,20
Stockham 5,6
Strahan 18
Strong 19,22
Studebaker 17
Sturm 22
Sullivan 20
Summers 20
Sutherland 17
Swanson 17

Sweazey 15
Swecker 22

Taul 22
Thacher 5
Thiele 17
Thompson 17
Thomson 15
Thurber 19,20
Tibbits
Torneden 19
Traxler 20
Treiuheller 6
Tripp 5
Trueblood 16

Ulrich 21
Unger 19

VanDevanter 17
VanNeste 22
Vaughn 18
Vitt 20
Vogler 16
VonEelking 9

Wagner 23
Waite 9
Walker 19
Wallace 17
Walter 19,20,22,23
Warner 5
Waters 9
Watkins 18
Watts 22
Webber 6
Wedell 17
Weeks 19
Weis 6,9
Weiss 10
Wellvorn 18
Wenrick 5
Westerhouse 19
Wetherby 23
Weybright 18

White 6,8,10,16,22
Whittier 5
Wiggins 23
Wilcox 18
Williams 20,22
Wills 5
Wilson 20,21
Wing 6
Winter 22
Winthrop 6
Wise 23
Wood 5,6
Woody 6
Wulfkuhle 20
Wurts 10
Winters 20

Yakle 17
York 19
Young 5,15

Douglas County, KS. Genealogical Society, Inc.
Publications Mail Order Form

Books & Publications

	Col. 1	Col. 2
Original Pre-Emptions in Douglas County, KS	9.18	8.65
Original Owners in the City of Lawrence, KS	11.10	10.45
Lawrence City Directory & Business Mirror 1860-61	6.35	6.00
Lawrence City Directory 1875-6	6.35	6.00
C. W. Smith Lawrence, KS Undertaker & Embalmer 1890-1907	8.45	8.00
Douglas County, KS Marriages 1854-1884	19.72	18.55
1875 Douglas County, KS Census	19.60	18.50
Index to Rural Schools & Schoolhouses of Douglas County, KS	4.21	4.00
Five Generation Ancestor Charts of DCGS Members-Vol. 1(1984)	8.41	8.00
Five Generation Ancestor Charts of DCGS Members-Vol. 2 (1992)	10.55	10.00
Complete Tombstone Census of Douglas County, KS Vol. 1 (HARD BOUND)	82.97	78.00
Complete Tombstone Census of Douglas County, KS Vol. 2 Sold by set Only (2 Sets left)	82.97	78.00
Complete Tombstone Census of Douglas County, KS Vol.1 (Spiral-soft bound)	37.07	35.00
Complete Tombstone Census of Douglas County, KS Vol.2 (Spiral-soft bound)	42.42	40.00
Douglas County, KS., Family Histories 1991-1992, Vol.1 <i>{Reduced Price}</i>	71.28	67.00
The House Building: My Search for Its Foundations by Carol Buhler Francis (Society earns \$6.78)	20.62	19.45

MAPS-All maps are folded flat for shipping

Douglas County, Kansas Territory Landowners 4 July 1857 Map & Index Set(Map 19" x 20)	6.35	6.00
Historic Map of Douglas County, Kansas (31" x 22")	6.35	6.00
Road Map of Douglas County, KS Cemetery Dist. (18" x 19")	2.64	2.50
Plan Map of Douglas County, KS (13 " x 12")	2.64	2.50

THE PIONEER- Quarterly

Back Issues	4.74	4.50
Contents Vol. I-XII	2.42	2.30
Contents XIII	.59	.57
Index Vol. I, II, III, IV	6.35	6.00
Index Vol. V	3.14	3.00
Index Vol. VI	3.14	3.00
Index Vol. VII	5.28	5.00

CHARTS

Our Family Tree-Six Generations (24" x 30") Color <i>(Folded Flat for shipping)</i>	3.67	2.65
Seven Generations-The Everton Publishers, Inc. 17" x 22" <i>(Shipping charge not included)</i>	3.74	3.50

Kansas residents use Col. 1. Libraries and Out of State Residents use Col. 2. Circle price to order.

Prices include postage/handling and KS. Sales Tax (6.9%). These prices supersede all previous prices. Make check payable to D.C. G. S.

NAME _____

ADDRESS _____

CITY _____ STATE _____ ZIP CODE _____

Send order form with remittance to:

Douglas County Genealogical Society Inc. P.O. Box 3664 Lawrence, KS. 66046-0664

The Pioneer
Douglas County, Kansas Genealogical Society, Inc.
P.O. Box 3664
Lawrence, Kansas 66046-0664

FORWARDING AND RETURN POSTAGE GUARANTEED
ADDRESS CORRECTION REQUESTED

