

The Pioneer Vol. XX No. 142 Jan. & April 1997

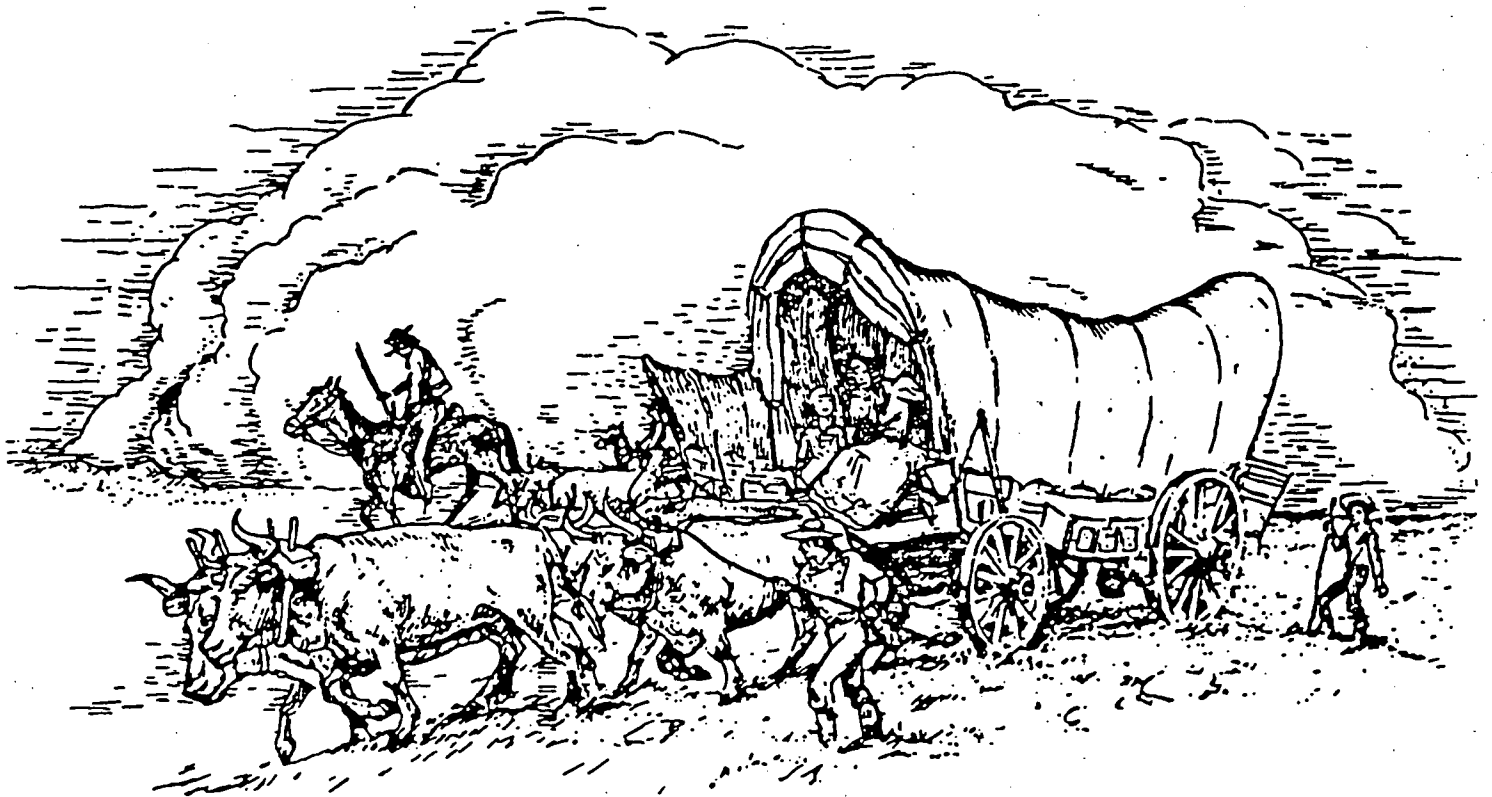
Original - Consolidated Index
to 1875 Census, Dglo., KS.

Compiled by Paul Jordan

Copied Oct. 30, 1999 for sale (individual)

Volume XX, No. 1 & 2
January & April, 1997

THE PIONEER



Published Quarterly By:

Douglas County Genealogical Society

P.O. BOX 3664

LAWRENCE, KS 66046-0664

THE PIONEER
Published Quarterly by
The Douglas County, Kansas Genealogical Society, Inc.
P.O. Box 3664
Lawrence, Kansas 66046-0664

ISSN 0739-4101

Volume XX, No. 1 and 2

January & April, 1997

| CONTENTS | PAGE |
|--|------|
| Open letter to Society Members | |
| Bible Records from American Bible Society----- | 1 |
| Shunganunga Boulder----- | 5 |
| 1893-1894 Lawrence Street Directory----- | 5 |
| Finding the cousinship----- | 9 |
| Instructions for copying bible & family records----- | 10 |
| Book Reviews----- | 11 |
| Windemuth Family----- | 11 |
| Douglas County Marriage Records----- | 13 |
| Fate of the 1890 Population Census----- | 14 |
| Consolidated index to 1875 census----- | 17 |
| Eudora lands of Paschal Fish----- | 39 |
| Index to Volume XX will appear in the next issue. | |

THE PIONEER welcomes articles and records for publication that are relevant to Douglas County family history, with the exception of published and copyrighted material. It is not necessary that articles be camera ready, but if you are typing for that purpose, be sure and leave enough margin space for binding. Send submissions to the PIONEER EDITOR at the address above, or submit to a Board member.

ADDRESS CORRECTIONS: If your PIONEER is returned to us by the Post Office for incorrect address and you have not filed an address correction with the Douglas Co., Kansas Genealogical Society's Membership Chairman, the PIONEER will be remailed to you ONLY UPON RECEIPT OF \$4.00 to cover Post Office charges to us.

OPEN LETTER TO SOCIETY MEMBERS

The Douglas County, Kansas, Genealogical Society was founded in 1975 and is in its twenty-second year. Many dedicated people have contributed to the success of the Society over the years.

During the last few years it has become increasingly difficult to find people to take on the various responsibilities of the group with the result that a committee has kept the society together. Now that committee is presenting a plan for at least the next year, 1998.

Our proposal is:

No meetings during 1998.

No Pioneer publication during 1998. You will receive all issues for 1997.

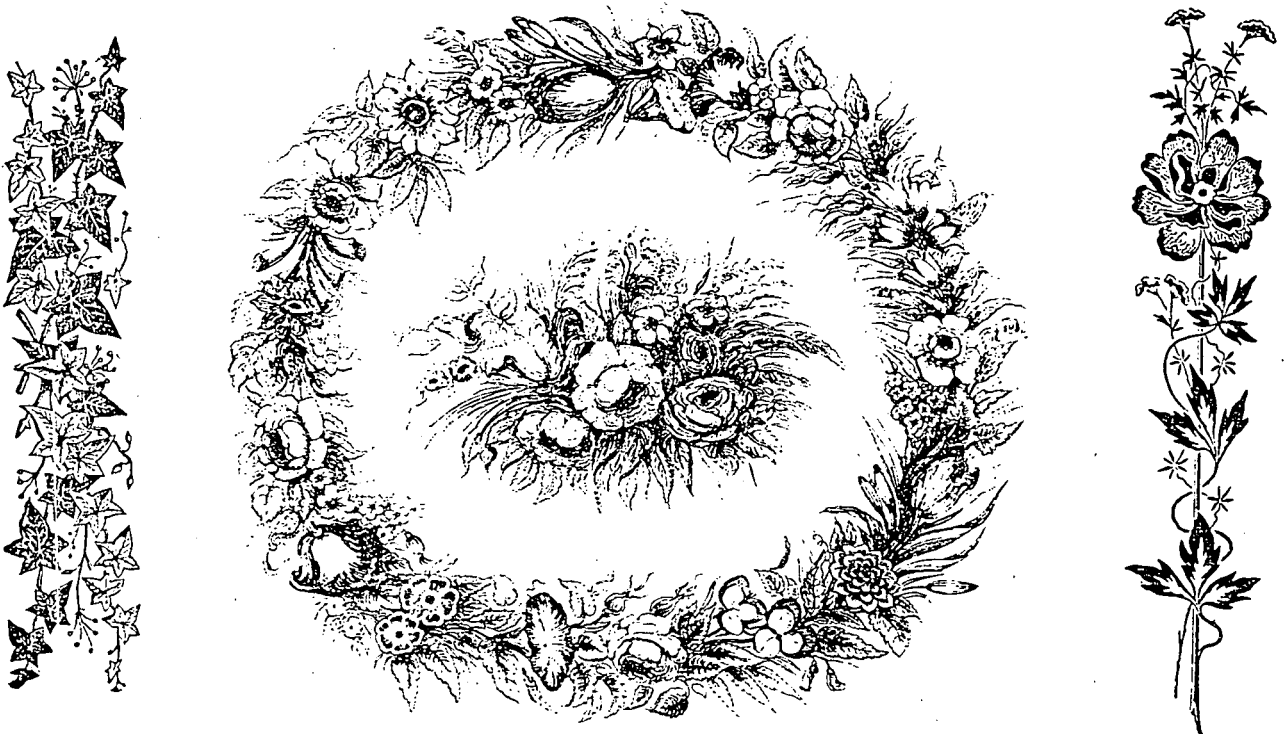
The Society Genealogist will continue to answer queries.

The Librarians will continue to look after the Osma Room in the Lawrence Public Library.

Dues will be at the members discretion. Donations of dues are welcome and appreciated. An audit of the Society's funds will appear in the next issue of the Pioneer.

The storage shed will be gone through, materials sorted and decisions made.

These are the remedies suggested by the committee and will become effective January 1, 1998. We are not disbanding but are becoming inactive for a year. We are hoping that some members will come forward to take over the Society at this time. We have a core of workers to help but we need new leadership.



Submitted by Zona Smith. Transcribed from Zerox copies of Bibles obtained from The American Bible Society.

F A M I L Y R E C O R D

DEATHS

DEATHS

William Titus
June 12th 1837

Laura Krin
November 21th 1837

Ellen Dortha
March 4th 1837

Titus Whitmore
August 27th 1878

Eliza D. Whitmore
November 23rd 1881

Richard Dart father of Daniel Dart
died Linden, Sept. 24th 1726
Ebenezer son of Daniel Dart Nov 17th
1777, Joseph son of Ebenezer May 5
1791, Migdal wife of Joseph, Mar. 25th
1835, Ashbel Nov. 5, 1844, Sarah
wife of Joseph, Jan 24th, 1806
Joseph son of Joseph. Nov. 6th 1842
August 21 1865
Sept. 18th 1865
Norman Dec. 19, 1869

FAMILY RECORD.

Births

Births

.....

Joseph Dart was born Sept. 1st 1770

Sarah Dart was born March 1st 1773

Joseph and Sarah were married, Oct. 5, 1792

Ashbel, born July 15, 1793, Monday, 10 A.M.

Russel, born June 12, 1795, 2 o'clock A.M.

Maria, born March 27, 1797

Joseph, born April 30, 1799

Norman, born Nov. 6, 1817, Friday, 12 A.M.

Eliza, born Feb. 2nd, 1804, Thursday

Clarissa, born April 27th, 1806, Monday 4 o'clock 30 mn.

Sally D. born July 24, 1808, Sunday, 6 o'clock, 30 mn. P.M.

.....

Sophia Amalia, born Dec. 23rd, 1811 Sunday 4 A.M.

Laura Ann born Nov. 30, 1812, Monday 8 o'clock P.M.

Harriet Nowell March 19th 1815, Sunday, 6 o'clock P.M.

Vienna born April 4th 1817, good Friday, 10 o'clock, 50 mn. P.M.

Prudence born March 2nd 1819 Thursday 11 o'clock 30 mn P.M.

Erastus born Thursday, April 5 1821, 2 o'clock 23mn, A.M.

Lizzie Himrod -- April 17th 1849

Bessie Lawton Whitmore August 29th, 1870

William Titus Jr. January 1st, 1872

Arthur Eugene November 28th, 1874

Raymond Dart, October 19, 1885

.....

FAMILY RECORD

| Births | Births |
|------------------------------------|---|
| Titus Whitmore Nov. 3rd, 1802 | Richard Dard of Linden 1635 Emigrated, new London Ct. about the year 1656. He was the father of Daniel Dart, who was born in New London, May 3, 1666 - - - - |
| Eliza Dart Feb, 12, 1804 | Ebenezer Dart, May 16, 1675 |
| Emma Eliza May 30th, 1829 | Thomas Dart, son of Ebenezer & Rebeca April 25, 1726 |
| William Titus August 25th, 1831 | Ebenezer, son of Rebecca, Feb 6th, 1726 |
| Ellen Dotha November 26th, 1837 | Rebecca, daughter of Ebenezer & Ruth Loomis, second wife, Nov. 23 1725 |
| Laura Ann November 26th, 1837 | Ruth March 6th 1731 Hannah Nov. 11, 1735 Joseph 1737 Ebenezer & Abiah Nov. 7th 1739 |
| Ellen Amelia Feb, 7th, 1841 | Cyrus, son of JOseph Dart and Abigail Himrod June 11 1764 Hannah, Dec. 6th 1765 Drusilla, Apr. 23rd, 1766 Joseph, Sept. 1st, 1770 Clarissa, Aug. 13th 1772 rilla, May 17th, 1781 etta, Jan y 18th 1785 |
| William Titus Sept. 29th, 1841 | |

FAMILY RECORD

Marriages

Marriages

Titus Whitmore
Eliza Dart
July 22, 1828

Emma Eliza & Woodruff T. Barnes
May 30th, 1850

William T. Whitmore
&
Lizzie Neimrod
Sept. 22nd, 1869

Lewis Austin Stovs
&

Bessie L. Whitmore
February 19th, 1895

- . Ebenezer Dart and Rebecca Moore
- . January 10, 1725
- . Ebenezer married 2nd time to Ruth
- . Loomis, June 26th 17 --
- . Joseph Dart & Abigail Brainard
- . July 1st, 1762
- . Joseph Dart & Sarah Hurd
- . Oct. 5, 1792
- . Maria & Joel Jones
- . Sept. 13, 1815
- . Maria, 2nd Marriage to M.P.
- . Armsby July 1827
- . Russel & Margaret Muli schonl
- . Dec. 18 182
- . Eliza & Titus Whitmore
- . July 22, 1825
- . Joseph & Dortha Denison
- . Dec. 1st, 1830
- . Clarissa & Wm. C. White
- . Aug. 11, 1832
- . Sarah Dow & Chester Humphry
- . Oct. 1st, 1832
- . 2nd marriage, Rich DeForest
- . Sept. 27, 1852
- . Nienna & Merrill E. Mack
- . Sept 2nd, 1861
- . 2nd Marriage, Wm.
- . July 27th 1869
- . Sophis & Benedict
- . Oct. 6, 1861
- . 2nd marriage, Henry Stryker
- . April 10, 1865
- . Norman & Harriet Denison
- . January 26, 1839
- . Louisa & A Hutchinson Ira
- . Jan. 12, 18 9
- . Harriet & Chester N. Case
- . Nov. 22, 1889
- . Prudence & Wm. H. Ovington
- . Nov. 5, 1851

Shunganunga Boulder ①

On May 30, 1854 the Kansas-Nebraska Act was signed by President Franklin Pierce creating Kansas Territory. Slavery was becoming a dividing wedge between the North and the South, the act left to those who would settle here the issue of whether Kansas would be with or without slavery. With the signing of the act began a flood of white settlers into the area. Many were connected to the New England Emigrant Aid Company. The purpose of the Company was to bring people with anti-slavery convictions to Kansas. It was important to Northerners that the new state, when it was received, be without slavery.

The first party sent west by the New England Emigrant Aid Company left Boston, Massachusetts on July 17, 1854 and arrived at the town site August 1, 1854. There were 29 men in the first party.

By September 11, sixty-seven additional members of the NEEAC and thirty-seven people who had joined *en route*, had arrived. On September 18, the first and second emigrant parties joined together to form a town association, adopted a constitution and planned and surveyed the town and started selling town lots and farm claims. This original plan is still obvious. Most of the streets running North and South still hold their original names.

1893-1894



For Reliable Information and Railroad Literature
Call at the **Santa Fe Ticket Office**, Lies Drugstore.
Tele. 135.

14

DIRECTORY OF LAWRENCE AND DOUGLAS COUNTY.

STREET DIRECTORY.

HOUSE NUMBERS.—Prior to the ordinance of May 1885 there was no uniform system of numbering the houses. But few houses were numbered and, in numbering the few each individual followed his own plan, usually making the house number the same as the number of the lot on which it stood.

The ordinance above referred to fixed a uniform system of numbering by hundreds, each block beginning with a hundred. By this ordinance the numbers begin at the north limit of the city, with one hundred, making Pinckney the six hundredth. The south end of each block 46 on the east, 47 on the west, in every block and on every street alike.

ADAMS, 10th south of river, from east to west limits.
ALABAMA, 9th west of Massachusetts, from north limits south to Warren street.
ARKANSAS, 12th west of Massachusetts, from north limits south to Warren street.
ASH, 1st north of river, from Maine east to Delaware (North Lawrence.)
BANKS, 14th south of river, from east to west limits.
BERKLEY, 5th south of river, from east to west limits.
BRIDGE, 4th east of river, from river north to limits (North Lawrence.)
CALIFORNIA, 16th west of Massachusetts, from Reed south to limits.

Go to **BRUCE** for **©OAL.**

The Oldest Coal Firm in Lawrence. 627 Mass. St. Tel. 113.

Wilder Bros.

Make Shirts for Dress Purposes a Special Feature.
ALWAYS HAVE A LARGE ASSORTMENT ON HAND.

1893-1894

The Atlas Land and Investment Company.

Farms for sale and rent in Kansas, Nebraska, Colorado, the Dakotas, Missouri, and throughout the Northwest.

DIRECTORY OF LAWRENCE AND DOUGLAS COUNTY. 15

- CEMETERY ROAD, from east city limits to Oak Hill Cemetery.
- CENTRE, 7th east of Bridge, from Maple north to Lyon (North Lawrence.)
- CHERRY, 3rd north of river, from Maple east to Delaware (North Lawrence.)
- CONNECTICUT, 3rd east of Massachusetts, from Mill to Adams.
- DANE, 4th north of Pinckney, from river west to limits.
- DELAWARE, 7th east of Massachusetts, from Quincy south to Adams.
- DELAWARE, 6th east of Bridge, from river north to limits (North Lawrence.)
- EAST, 9th east of Bridge, from river north to limits, North Lawrence.
- ELLIOTT, 2d north of Pinckney, from river west to limits.
- ELM, 2d north of river, from river east to limits, North Lawrence.
- EUCLID, 10th south of river, from New Hampshire west to Ohio.
- FLORIDA, 14th west of Massachusetts, from Reed south to Winthrop.
- GENEVA, 12th south of river, from Connecticut west to New Hampshire.
- GARFIELD, 9th south of river, from Delaware to Oregon.
- HANCOCK, 7th south of river, from east to west limits.
- HENRY, 3d south of river, from east to west limits.
- ILLINOIS, 8th west of Massachusetts, from north limits south to Berkley.
- INDIANA, 6th west of Massachusetts, from north limits south to Hancock.
- KENTUCKY, 2d west of Massachusetts, from Pinckney south to limits.
- LAKE, 9th n of river, from Pennsylvania east to limits (North Lawrence.)
- LEE, 8th south of river, from east to west limits.

Morris, THE LAWRENCE Photographer,

829 Mass. St. The Finest Cabinets in the city.

Wilder Bros.

Have a Large Assortment of Shirts for Neckties and Wearings. Embracing Patterns in very "Navy" designs.

WILDER BROS.

Make Dress Shirts, Night Shirts and Underwear FROM THE BEST GRADE OF MATERIAL.

COAL, ICE, LIME, CEMENT.

A. J. Griffin,

West of Lawrence National Bank.

16 DIRECTORY OF LAWRENCE AND DOUGLAS COUNTY.

- LINCOLN, 6th north of river, from river east to limits (North Lawrence.)
- LOCUST, 3d n of river, from river e to limits (North Lawrence.)
- LOUISIANA, 5th west of Massachusetts, from river s to limits.
- LYON, 8th north of river, from river east to west limits (North Lawrence.)
- MAINE, 10th west of Massachusetts, from n limits to Berkley.
- MAINE, 5th east of Bridge, from river north to limits (North Lawrence.)
- MAPLE, 4th n of river, from river e to limits (North Lawrence.)
- MARYLAND, 4th east of Bridge, from river north to limits (North Lawrence.)
- MASSACHUSETTS, running south through center of city, from Maple to limits.
- MECHANIC, 8th east of Bridge, from Maple north to Lincoln (North Lawrence.)
- MICHIGAN, 13th west of Massachusetts, from north limits south to Warren.
- MILL, 1st north of river, from Bridge east to New York (North Lawrence.)
- MISSISSIPPI, 7th west of Massachusetts, from north limits s to Adams.
- MISSOURI, 11th west of Massachusetts, from limits s to Warren.
- NEW HAMPSHIRE, 1st east of Massachusetts, from river south to Quincy, also from Lee south to limits.
- NEW JERSEY, 5th east of Massachusetts, from river s to Adams.
- NEW YORK, 4th east of Massachusetts, from north limit south to Adams.
- NORTH, 10th n of river, from river e to limits (North Lawrence.)
- OAK, 1st n of river, from Delaware e to limits (North Lawrence.)
- OHIO, 4th west of Massachusetts, from river south to limits.
- ONEIDA, 13th south of river, from Connecticut west to New Hampshire.
- ONTARIO, 11th south of river, from Connecticut w to Louisiana.

Wm. Booner For Good Cheap Groceries

734 Massachusetts Street.

1893-1894

H. L. STEVENS, Dealer in
Agricultural * Implements, * Hardware,
DEERING BINDERS AND MOWERS, WAGONS, BUGGIES, SURRIES, Etc.,
918 MASSACHUSETTS STREET.

DIRECTORY OF LAWRENCE AND DOUGLAS COUNTY.

17

- OREAD AVENUE, 6th west of Massachusetts, from Hancock southwest to Adams.
- OREGON, 8th east of Massachusetts, from Quincy s to Adams.
- PENN, 1st north of Pinckney, from river west to limits.
- PENNSYLVANIA, 6th east of Massachusetts, from north limits south to Adams.
- PERRY, 5th north of river, from river east to Maryland (North Lawrence.)
- PINCKNEY, 1st south of river, from Massachusetts w to limits.
- PLEASANT, 7th north of river, from Rhode Island east to Pennsylvania (North Lawrence.)
- QUINCY, 6th south of river, from east to west limits.
- REED, 3rd north of Pinckney, from river west to limits.
- RHODE ISLAND, 2d east of Massachusetts, from north limits south to Adams.
- RIVER, 3rd west of Bridge, from Lincoln north to Lyon (North Lawrence.)
- SENATOR, 15th south of river, from New Hampshire west to Louisiana.)
- TENNESSEE, 3d west of Massachusetts, from river s to limits.
- VERMONT, 1st west of Massachusetts, from north limits south to Quincy, also from Lee south to limits.
- WALNUT, 2d north of river, from Connecticut east to limits (North Lawrence.)
- WARREN, 4th south of river, from east to west limits.
- WINTHROP, 2d south of river, from New Jersey west to limits.
- WISCONSIN, 15th w of Massachusetts, from Reed s to Winthrop.



C. W. ALLENDORPH, Manufacturer of
Corn Meal, Corn Chop,
Corn & Feed Mill. Dealer in
GRAIN, FLOUR AND PRODUCE.
1021-1023 MASS. ST. TELEPHONE 23. LAWRENCE.

CULBERTSON & THOBURN, COAL AND SAND. Telephone 84.
MERCHANTS NATIONAL BANK BUILDING.

Does up Shirts, Collars and Cuffs with a Polish
EQUAL TO THAT OF NEW YORK.
Wilder Bros. Steam Laundry



DO NOT CROSS THE RIVER

To get to the Depot, (unless you are in North Lawrence).

18

DIRECTORY OF LAWRENCE AND DOUGLAS COUNTY.

WARD BOUNDARIES.

FIRST WARD.—The First Ward includes all that portion of the city south of the Kansas River, west of Massachusetts street, and north of Warren street.

SECOND WARD.—The Second Ward includes all that portion of the city west of Massachusetts street and south of Warren street.

THIRD WARD.—The Third Ward includes all that portion of the city east of Massachusetts street and south of Warren street.

FOURTH WARD.—The Fourth Ward includes all that portion of the city south of the Kansas River, east of Massachusetts street and north of Warren street.

FIFTH WARD.—The Fifth Ward includes all that portion of the city north of the Kansas River and west of Maryland street.

SIXTH WARD.—The Sixth Ward includes all that portion of the city north of the Kansas River and east of Maryland street.



Go to BRUCE for COAL.

The Oldest Coal Firm in Lawrence. 627 Mass. St. Tel. 113.

Page 7

Genealogical Society of New Jersey
Instructions for Copying Bible and Family Records

Your record should be placed on a good grade of bond paper. 8½ x 11 inches. Use a typewriter with black ribbon, or use non-fading ink. Leave margins of at least 1½ inches on the left, and ¾ inch on other sides. Please provide information in the sequence given below. After copying, CHECK BACK TO VERIFY ACCURACY. Photocopies, being exact copies, are especially welcomed, however, verify that ALL data is easily readable AND include the supplementary information listed below. Mail copies to Genealogical Society of New Jersey, P.O. Box 1291, New Brunswick, N.J. 08903.

1. Title: Head the record with a specific title: "John Smith Family Bible Record", or if not a Bible, "Family Record of John Smith", "Record from Mary Smith's Sampler", etc.
2. Copyist and Owner: Give name and address of the present owner of the record. Also give the name and address of the copyist, and the date of copying. Be sure to state whether your copy was made from the ORIGINAL record, or from a COPY. If your record is a copy of a copy, state when and by whom the earlier copy was made, and where you found this copy.
3. Description: Whether Bible, book, sampler, etc., fully describe the original source. For publications, give the following from the title page: (a) title of book or Bible edition, (b) author, (c) publisher, and publisher's address, (d) date of publication. Also note any figt inscriptions, owner's names, etc. printed or written on covers, title page or elsewhere within the volume.
4. Biographical Information: If possible, give a brief background sketch on the early owner(s) of the record, including family origin and relationships, places of residence, and any helpful personal information such as civic, military or professional service, burial places, etc.
5. Arrangement: Copy the records EXACTLY as they appear in the original, even though you may know that some errors exist. Copy exact wording, spelling, punctuation, etc. Do not abbreviate or use ditto marks, unless the original record does so. As nearly as possible preserve the original arrangement. If a group of entries (usually at the beginning) appears to have been recorded all at the same time, this fact should be noted, as this may indicate transcription from another record or from memory--leaving room for errors to occur.
Where you know the record to be in error, make a NOTE and give source of the correct information. Also note any missing, illegible or doubtful entries. Enclose all notes in square brackets[] so they cannot be misinterpreted as being part of the original record.
6. Loose papers: Copy all announcements, newspapers clippings, or other records which may be laid or pasted in the volume. Supply a suitable subtitle for this material so it can be distinguished from the written entries in the volume.

Bardell, Paul H., Jr.

Descendants of Joseph Bardell of Baltimore, Maryland circa 1750. Carmel, NY, Paul Bardell, 1996. 42p., illus, charts, footnotes, maps.

This self-published, soft-cover publication is the first edition of the genealogy of the descendants of Joseph Bardell who lived in Baltimore, Maryland in 1750. It begins with Josph Bardell "surfacing in colonial Maryland records about 1746 when he and his wife Jane registered the births of their sons at St. Thomas' Protestant Episcopal Church at Garrison Forest, Baltimore County (now near Owings Mills)". The author gives a short history of the Bardell surname and where others by that name are mentioned in early history. He gives marriages, deaths, birth moving through ten generations. This in depth information has been gleaned from tax lists, census records, historical magazines, testamentary proceedings, monographs, diaries, estate settlements, land patent records, etc.

In 1861 the family moves to Kansas and a brief history of the reasons for the move is given. Some rode with Jim Lane and experienced the "Missouri border ruffians". Some of the surnames, besides Bardell, are Saum, Trew, Barber, Benedict, McCune, Driggs, Robinson, and Tannehill. These are the names with Kansas connections.

The book is easy to follow through and will be a great help for those with these surnames. It was donated to the Society by the author and will be found in the Osma room of the Lawrence Public Library.

Reviewed by Mary D. Burchill

The Windemuth Family Heritage

The Windemuth Family Organization has completed their two-volume Windemuth Family Heritage and a limited number of copies are for sale. It as an update to the 1900 Wintermute Family History and includes all descendants who were included on the hundreds of genealogy forms that were returned to the Genealogy Committee. It is published in two volumes on 8 1/2" by 11" pape, is hard cover embossed in gold on both spines and covers; printed on 60# acid free paper, has reinforced binding, and is Smythe-sewn and casebound. Here are a few of the comments written to James W. Wintermute, editor: "It is fantastic!!!...I am very impressed with the staggering amount of research and time needed to produce these two volumes...I can't believe I have so many wonderful ancestors..Great reading, nice job...You did a marvelous job on the books." The Heritage includes fascinating details of the lives, interests, activities and experiences from 1694 to 1996. Many historical pictures are included. The index makes it easy to locate your own family ancestors and descendants. Cost is \$105 plus \$8 boxing and mailing costs.

To order the two volume set contact: Dick Wintermote, 2605 Princeton Blvd., Lawrence, KS 66049-1703.

Dick is a member of the Douglas County, Kansas, Genealogical Society.

Bremer, Ronald A.

Compendium of Historical Sources. Revised 1994 edition. Salt Lake, Progenitor Gen. Soc. Inc., 1994. 914p. Glossary, Index.

There are 30 chapters which cover; General Principles of Genealogical Research, Notekeeping, Correspondence, Public Library, Salt Lake City, Library of Congress, National Archives, Court Records, Land Records, Counties, WPA Inventories, Vital Records, Census Records, Immigration-Naturalization and Passenger Lists, Church Records, College and Universities pre 1900, Fraternal Societies and Alliances, Military Records, Insurance Companies, Railroad Records, Canada, Special Information, Museums, Sources and Repositories, Basic Reference Sources, Place Names in 1870's, American Townships and Minor Civil Divisions. The amount of information in this volume is staggering as you can see by the listing of the chapter names. Mr Bremer has attended several of the leading genealogical courses and visited every state in compiling this book. Information of this sort can be found separately in other publications but each compilation will have a different focus. This is a complete grouping of information and one which should be consulted.

It is on the shelves in the Osma Room at 300.01.

Reviewed by Mary D. Burchill

Utley, Lucile

Marion County South Carolina Abstracts of Deeds. volume 1, Books A-E 1800-1811. Charlotte, NC, Alita White Sutcliffe, 1996. 218p. index.

The deeds in this volume come from the Liberty County/Marion District Court House dating from 1800. There were a number of earlier deeds which were also recorded dating back to 1756. The bulk of the book is the abstracts of the deeds, covering Books A-D. The years covered are 1800-1811 with a few from the 1700's. Each abstract references to the page number and deed book where complete information can be found. An average abstract will be 8-10 lines and will include an average of ten names-buyers, sellers, slaves, witnesses, etc. There are an average of seven abstracts per page. There 4 indices include an inclusive index of names, an index of female first names. index of slave names and an index of place names. If you have people from this part of the country this book could be a goodsend.

It is on the shelves in the Osma Room at 506.56

Reviewed by Mary D. Burchill

GENTECH, Inc and
Allen County Public Library Foundation
invited you to

"Developing the Partnership:
Genealogy and Technology"

January 23 and 24, 1998
Ft. Wayne, Indiana

For more information on GENTECH contact: <http://www.gentech.org/>

or Allen County Public Library

900 Webster Street

PO Box 2270

Fort Wayne, IN 46801-2270

Fax: 972-495-1569

DOUGLAS COUNTY MARRIAGE RECORDS, A MEMORIAL TO THOMAS GORTON

Genealogists and researchers are quickly discovering the 16 microfilm reels of Douglas County Marriage Licenses, covering from 1863 to 1992. Charles Worley of the Douglas County Genealogical Society recently visited the Court House, and learned these valuable records were being filmed. He immediately made arrangements for a second set which was purchased by the Society and placed in the Osma Room.

The reels are 16mm so at present can only be used on the reader/printer. One index is done by the husband's last name; the second is by the wife's maiden name. Mr Worley, long a volunteer genealogist in the Osma Room, has made a printed index to these reels. He is hoping probate records soon will become available on microfilm.

From *Connections*, a monthly publication of the Lawrence Public Library

Thomas A. Gorton, formed Dean of the School of Fine Arts at the University of Kansas died 26 February 1997 in Lawrence. He was a member of the Douglas County Genealogical Society and had been the Society's Genealogist for many years. He is buried in Lancaster, PA and is survived by his wife, Catherine, of the home. The Society has purchased microfilm of the marriage records of Douglas County to places in the Society's library in the Lawrence Public Library. They are a memoriam to Dean Gorton.

THE FATE OF THE 1890 POPULATION CENSUS

Condensed by Paul Jordan from an article, "First in the Path of the Firemen: The Fate of the 1890 Population Census," by Kellee Blake, in the Spring 1996 issue (Vol. 28 No. 1) of Prologue: Quarterly of the National Archives. This condensation lacks much of the information and flavor of the original 18-page article which has 18 illustrations and 46 reference notes. The condensation omits all of the extensive information about the special enumeration of Union veterans and widows. It would be well worth the effort to find and read the complete article which is available in the Documents Library of the University of Kansas and at many other large libraries. Searchers of Kansas genealogical information are fortunate that state censuses are available for 1885 and 1895 at the Kansas State Historical Society and the University of Kansas, and that the Historical Society is in the process of indexing the 1895 census.

Reference sources routinely dismiss the 1890 census records as "destroyed by fire" in 1921. Examination of the records of the Bureau of Census and other federal agencies, however, reveals a far more complex tale. This is a genuine tragedy of records--played out before Congress fully established a National Archives--and eternally anguishing to researchers.

In March 1896, before final publication of all general statistics volumes, the original 1890 special schedules were badly damaged by fire and destroyed by Department of the Interior order. No damage to the general population schedules was reported at that time. Despite repeated ongoing requests by the secretary of commerce and others for an archives building where all census schedules could be safely stored, by January 10, 1921, the schedules could be found piled in an orderly manner on closely placed pine shelves in an unlocked file room in the basement of the Commerce Building.

At about five o'clock on that afternoon, building fireman James Foster noticed smoke and immediately reported it to the desk watchman, who called the fire department. After some setbacks from the intense smoke, firemen gained access to the basement. While a crowd of ten thousand watched, they poured twenty streams of water into the building and flooded the cellar through holes cut into the concrete floor. By 9:45 P.M. the fire was extinguished, but firemen poured water into the burned area past 10:30 P.M. Disaster planning and recovery were almost unknown in 1921. With the blaze extinguished, despite the obvious damage and need for immediate salvage efforts, the chief clerk opened windows to let out the smoke, and except for watchmen on patrol, everyone went home.

The morning after was an archivist's nightmare, with ankle-deep water covering records in many areas. The 1890 census was stacked outside the vault and was, according to one source, "first in the path of the firemen." That morning, Census Director Sam Rogers reported the extensive damage to the 1890 schedules, estimating 25 percent destroyed, with 50 percent of the remainder damaged by water, smoke, and fire. Salvage of the watersoaked and charred documents might be possible, but saving even a small part would take a month, and it would take two to three years to copy off and save all the records damaged in the fire.

The still soggy, "charred about the edges" original and only copies of the 1890 schedules remained in ruins. At the end of January, the records damaged in the fire were moved for temporary storage. Over the next few months, rumors spread that salvage attempts would not be made and that Census Director Sam Rogers had recommended that Congress authorize destruction of the 1890 census. Prominent historians, attorneys, and genealogical organizations wrote to new Secretary of Commerce Herbert Hoover, the Librarian of Congress, and other government officials in protest.

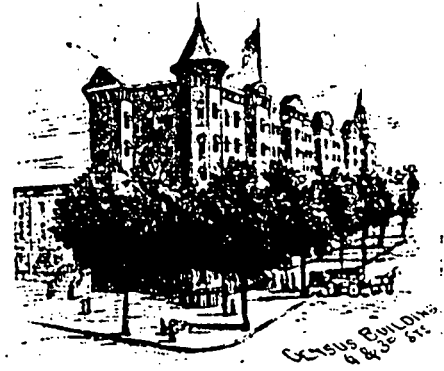
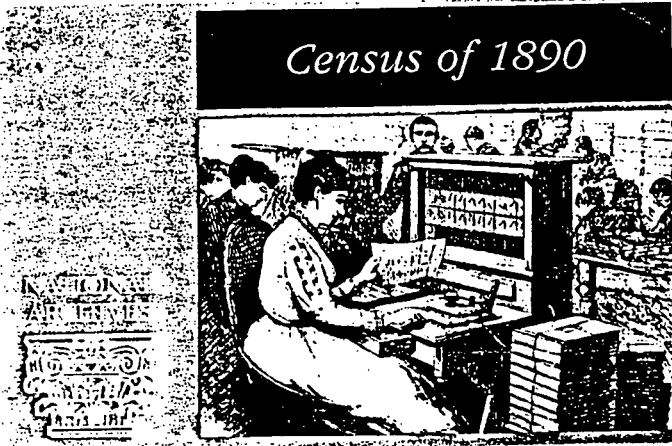
By May of 1921 the records were still piled in a large warehouse where, complained new census director William Steuart, they could not be consulted and would probably gradually deteriorate. Steuart arranged for their transfer back to the census building, to be bound where possible, but at least put in some order for reference.

The extant record is scanty on storage and possible use of the 1890 schedules between 1922 and 1932. In December 1932, in accordance with federal records procedures at the time, the Chief Clerk of the Bureau of Census sent the Librarian of Congress a list of papers no longer necessary for current business and scheduled for destruction. He asked the Librarian to report back to him any documents that should be retained for their historical interest. The Librarian identified no records as permanent, the list was sent forward, and Congress authorized destruction of February 21, 1933. Ironically, just one day before Congress authorized destruction of the 1890 census papers, President Herbert Hoover laid the cornerstone for the National Archives Building.

In 1942 the National Archives accessioned a damaged bundle of surviving Illinois schedules as part of a shipment of records found during a Census Bureau move. At the time, they were believed to be the only surviving fragments. In 1953, however, the Archives accessioned an additional set of fragments. These sets of extant fragments are from Alabama, Georgia, Illinois, Minnesota, New Jersey, New York, North Carolina, Ohio, South Dakota, Texas, and the District of Columbia and have been microfilmed as National Archives Microfilm Publication M407 (3 rolls). A corresponding index is available as National Archives Microfilm Publication M496 (2 rolls).

The loss of the 1890 schedules and absence of part of the special veterans enumeration are especially painful information losses for which there is no real balm. However, all of the federal census (pre-1920) might have been destroyed in that 1921 fire, especially if it had consumed the entire Commerce Building. The tragedy of the 1890 census remains a constant reminder of the necessity for a vigorous National Archives and unrelenting vigilance about the historical record.

* * *



| | Number of Bundles | | |
|-------------------|-------------------|--------------------------------|---------|
| | Originally | After fire of Jan. 10, 1921 | On file |
| UNITED STATES | 41,597. | 8,992. | |
| Alabama | 854. | 854. | |
| Arizona | 42 | 42. | |
| Arkansas | 752. | 752. | |
| California | 983 | 983. | |
| Colorado | 240. | 240. | |
| Connecticut | 397. | 397. | |
| Delaware | 79 | 79 | |
| Dist. of Columbia | 139. | 139. | |
| Florida | 194. | 194. | |
| Georgia | 870. | 1,701. | |
| Idaho | 72. | - | |
| Illinois | 2,513. | - | |
| Indiana | 1,863. | - | |
| Iowa | 1,603. | - | |
| Kansas | 1,544. | - | |
| Kentucky | 1,225. | - | |

Part of a Census Bureau list compiled after the fire shows no Kansas schedules remaining.

Consolidated Index to 1875 Census, Douglas County, Kansas.

Compiled by Paul Jordan

This index is a consolidation of separate indexes for townships and wards in 1875 Douglas County Kansas Census published by The Douglas County Genealogical Society, 1985. This index includes some corrections made by using the 1985 publication and a microfilm copy of the 1875 census (filmed in 1945 by the Kansas State Historical Society) in the Documents Library of the University of Kansas. Most of the microfilm is clearly readable, with the exception of Clinton Township for which the writing is faded making most of it difficult to read and some nearly impossible to read, Kanwaka Township for which the copy is clear but the handwriting is difficult to interpret, and part of page one of Willow Springs Township which is faded.

Page numbers are for the original census, as listed in the last column on each sheet of the 1985 typescript (first column for Eudora Township). Thus this index may be used either for a microfilm copy of the original census or for the 1985 typescript version. The 1985 typescript has Lawrence Ward 5 and Grant Township in alphabetical order rather than the order of the original enumeration.

The 1985 publication omits some columns of the 1875 population schedule--Dwelling House, numbered in the order of visitation; Families, numbered in the order of visitation (included for Eudora only); Value of Real Estate; Value of Personal Property; Attended school within the year; and nine columns relating to illiteracy.

The 1985 publication was typed from the original book made available by the Kansas State Historical Society. The compilers also used a copy of the Lawrence City Directory of 1875-6 as an aid in reading some of the difficult writing; in many instances the names from each source are given in that publication.

When using this index, search all conceivable spellings and misspellings of the name in order to compensate for misspellings and poor handwriting in the original census and other errors. For example, not just Pierce, Peirce, and Pearce but also Biggs and Riggs; Eudall, Udall, and Yewdall; Danen and Dauen; Chouteau and Showtow. Also remember that a page of the census may have two or more occurrences of a particular surname separated by other surnames.

An index for the entire State of Kansas (157 reels of microfilm) is available at the Kansas State Historical Society, Topeka.

Proofreading of this index was by Paul and Carolyn Jordan.

Abbreviations (in the order shown in the census):

LW1 through LW6 = Lawrence Wards 1 through 6
CL = Clinton Township
EU = Eudora Township
GR = Grant Township
KA = Kanwaka Township
LE = Leecompton Township
MA = Marion Township
PA = Palmyra Township
WA = Wakarusa Township
WI = Willow Springs Township

Abbie LW2--11
 Abbott LW1--4
 LW2--23, 29
 Abdelal LW2--28
 Abramace LW3--33
 Abramace LW3--33
 Abrams LW3--33
 Achning LW4--10
 Ackerman LW1--38
 Adair EU--1
 Adams LW1--11, 30, 35
 LW2--3, 32
 LW3--5, 35
 LW4--9
 LW5--13
 EU--5
 GR--4, 10
 MA--23
 WA--25, 44,
 47, 48
 Adwers LW4--17
 Agust WA--60
 Ahlstrom CL--15
 Aitkin PA--46
 Akers LW5--2
 LW6--17
 WA--60
 Akirs LW6--7, 8
 Albach LW2--15
 WA--44
 Albin CL--2
 Albright EU--33
 PA--39
 Albritten EU--31
 Alcorn PA--14
 Alder LW2--34
 WI--1
 Alexander LW1--17, 35
 LW3--24
 LW6--3
 Algair CL--3
 Allen LW2--4, 6
 LW3--3, 8
 LW6--15
 CL--7, 19
 EU--20, 21
 GR--1, 10
 WA--12
 Allford LW2--7
 Allison LW3--44
 Allstot LW3--28
 Allstron LW4--21
 Altenbernd EU--12, 13
 Altman LW1--38
 Ambler LW1--24
 Amend EU--34
 American EU--40
 Anderson LW1--3, 6, 11,
 19, 21, 25,
 31, 32,
 40, 41
 LW2--20, 31
 LW3--7, 18, 22,
 23, 43
 LW4--4, 11, 13
 LW5--12
 LW6--1, 11
 CL--3, 7, 11
 EU--15
 KA--14, 18,
 19, 20
 MA--5, 6
 PA--6, 15
 WA--13, 28, 38,
 39, 41, 51,
 59, 61

Andrews LW2--6, 28
 LW3--31
 LW4--25
 CL--14
 PA--14, 15
 WA--29, 44
 Anglam MA--24
 Anthony LW3--15
 LW4--2
 EU--1
 PA--36
 Anton LW2--29
 EU--18
 Apitz LW1--18
 Applegren LW4--12
 Applewhite KA--7
 Aquest WA--60
 Argo LW1--19
 Arms LW6--16
 Armstrong LW1--13
 Arnes LW1--17
 Arnold LW2--15
 EU--27
 GR--7
 MA--5, 15
 Ashby LW1--33
 EU--2
 PA--24
 Asher LW3--1
 Ashmeal WI--6
 Ashton LW2--22
 WA--52, 53
 Assman LW1--31
 LW2--14
 WA--58
 Atcheson LW3--37
 Atchinson LW5--11
 LW6--15, 16
 Atchison LW5--11
 Atherton LW1--4
 Atwater LW1--24
 Aungst PA--28
 Austadt PA--34
 Austin LW1--3, 35, 37
 LW4--24
 LW5--13
 CL--2
 Avery LW1--16
 CL--2
 WA--58
 Ayer WA--43
 Babcock LW2--20
 Bac LW3--40
 Bach MA--18, 19
 Bachelor LW4--14
 Bacon LW5--6
 Badger MA--9, 10
 Badskey EU--32
 Bagelman LE--18, 19
 Bahmeir LW2--25, 28
 Bailey LW3--13
 CL--12
 WA--44
 WI--14
 Bailie LW2--25
 WA--57
 Bainter LW6--17
 Bair EU--8
 Baker LW1--21, 39
 LW2--24, 25
 LW6--15

Baker EU--23
 MA--6, 17
 PA--37
 WA--36, 44
 WI--5
 Baldwin LW1--5
 CL--2
 KA--11
 MA--18
 WA--7, 50
 Bales EU--14
 Ballard LW5--5
 Bane PA--5
 Bangs LW1--35, 42
 Banhifle LW2--4
 Banker MA--21
 Banks LW1--2
 LW3--20
 CL--18
 LE--11
 MA--3
 WA--4, 48
 Bannister LE--21
 Banta PA--14
 Barber LW2--29, 30
 LW4--18
 LW5--6
 KA--14
 Barclay EU--13
 GR--3
 Bardell GR--9, 11
 Bardwell LW2--11
 Baricklow LW1--27
 Barker LW1--16, 19, 40
 LW2--9
 LW3--19, 27, 29
 LW6--9, 19
 LE--17
 WA--7
 Barley GR--5
 Barnard LW3--9
 Barnes LW2--10
 CL--2
 GR--8
 PA--8
 Barnett LW3--14
 EU--16, 30
 Barnhart MA--15, 22, 23
 WI--9
 Barnhisel WA--4
 Barnum PA--51
 Barret GR--12
 Barriclow PA--45
 Barrielow PA--15, 18
 Barry LW1--29
 LW4--15
 Barteaux LW1--36
 Barteldes LW4--3
 Bartheldes LW4--21
 Bartholow LW2--29
 Bartleman LW3--22
 Bartlett LW2--29
 LE--22
 CL--17
 MA--8
 PA--18, 38, 39
 Bartusch EU--32
 Baruck LE--18
 Baskervale LW5--8
 Bass LW3--9
 Basset LW2--35
 Bast KA--4

| | | | | | |
|--------------------|-----------------|--------------------|-------------|--------------|----------------|
| Batdorf | WA--16 | Bierman | WA--2 | Bowen | CL--14, 15, 16 |
| Bates | LW4--7 | Bigelow | LW2--30 | | MA--22 |
| Baum | CL--12 | Biggs | LW3--17 | Bower | EU--32, 36, 39 |
| Baxter | LW6--1 | | LW6--11 | Bowers | LW1--12, 13 |
| Baylor | LW3--8 | Bilderback | MA--1 | | MA--12, 13 |
| Bazil | EU--23 | Billings | LW3--42 | | WI--1, 8, 9 |
| Beach | LW1--13 | Bingamon | PA--19 | Bowes | LW1--4 |
| | KA--1 | Bininger | KA--6 | Bowing | LW4--3 |
| | WA--46 | Binkley | LW4--11 | Boyce | KA--2 |
| Beal | LW1--37 | Birmingham | LW4--17 | Boyd | LW1--6 |
| Beam | LW2--2 | Bishop | CL--11 | | LW3--42 |
| | LW3--43 | | WA--27 | | CL--14 |
| Beamen | MA--23 | Bisknell | LW1--19 | | KA--4, 16, 18 |
| Bean | LW6--10 | Bivens | LW3--31 | | LE--26 |
| Bear | LW1--2 | Bjorklund | CL--11 | | WA--15 |
| Beard | LW2--9 | Black | LW6--20 | | WI--4 |
| | WI--11 | | EU--4 | Boyer | LW2--5, 7 |
| Beattie | LW2--14 | | PA--16, 17, | | LW4--11 |
| Bebee | LW1--38 | | 19, 20 | Boyle | LW4--16 |
| Beber | WA--1 | | WI--12 | | CL--16, 17 |
| Beck | EU--32 | Blackburn | LW5--8 | Boynton | PA--46 |
| Becktal | PA--50 | Blackledge | LW2--6 | Brack | LW4--10 |
| Bedale | LW3--24 | Blackman | LW3--8 | Brackett | WA--11 |
| Bedele | LW3--24 | | GR--1 | Bradley | LW1--20 |
| Bedgood | CL--16 | Blackner | LW4--7 | | LW2--6 |
| Bedinger | LW4--3 | Bladen | PA--24 | | LW3--15 |
| | KA--6 | Blair | MA--9 | | LW4--4 |
| Beeks | PA--43 | Blakely | LW1--16 | | CL--19 |
| Beels | GR--13 | Blanchard | LW1--27 | | GR--11 |
| Beezeley | GR--8 | Bland | LW3--35 | Bradshaw | MA--22 |
| Beezley | WA--31 | Blaney | LE--11 | Brady | LW2--18 |
| Beggerly | EU--4 | Blankenship | KA--13 | | LW4--2 |
| Beibee | MA--16 | Blanton | WA--30 | | PA--4 |
| Beirsaw | LW2--13 | Blechel | EU--38 | Brandon | LE--10 |
| Belinger | LW4--13 | Bleckel | LW4--10 | Brangan | EU--15 |
| Bell | LW2--7, 18 | Blew | LW4--19 | Branin | LW1--13, 27 |
| | LW4--10, 12 | Blish | LW1--33 | Brannon | LW3--33 |
| | LW5--1 | Blocker | WI--7 | Brass | LW2--8 |
| | LW6--1 | Blodgett | LW4--9 | | KA--12 |
| | KA--19, 21 | Blood | LW2--16, 23 | Brauer | LW2--31 |
| | PA--19, 34, 37, | Bloom | PA--8 | Bravens | LW6--12 |
| | 39, 40, 42 | Blue | LE--22 | Brawly | KA--19 |
| | WA--23, 41 | Blunt | LW2--5 | Bray | LW2--22, 23 |
| Bellamy | LW3--36 | | KA--11 | Brayton | LW1--43 |
| Benas | LW4--16 | Boardees | LW1--7 | Brecheisen | EU--26 |
| Benedict | LW4--15 | Boardman | LW1--4 | Breckheisen | PA--30, 31 |
| Benidict | LW2--3 | | PA--47 | Breckinkin | LW4--14 |
| Benjamin, | KA--3, 13, | Bodwell | PA--16, 24 | Breeze | PA--17 |
| Benjman | 18, 19 | | WI--11 | Breithaupt | PA--30 |
| Bennett | LW3--6 | Bolger | WI--9 | Brende | EU--32 |
| | CL--1 | Bolton | PA--13 | Brendman | LW1--17 |
| | LE--7, 8 | Bond | LW3--35 | Brett | WA--53 |
| Benson | LW1--31 | | CL--10, 11, | Brewer | PA--4 |
| | MA--11 | | 15, 17 | Brewington | PA--29, 30 |
| | PA--8 | Bonner | MA--4, 24 | Brichtehsaur | LW4--10 |
| | WA--20 | Booker | EU--33 | Brickley | LW2--22 |
| Benton (or Boulon) | CL--1 | Booth | LW5--2 | | LW3--4 |
| Bercaw | LW2--13 | | KA--20 | | PA--37 |
| Bergen | LW3--8 | | PA--18 | Bricourt | PA--46 |
| Berger | LW3--33 | Border | LW2--2 | Bridges | LW1--11 |
| Bergman | LW2--1 | | WI--12 | | LW2--18 |
| Bernitz | EU--3 | Borer | EU--11, 36 | Brichtehsaur | LW4--10 |
| Berry | LW2--16 | Borgolthaus | LW2--15 | Briggs | LW3--9 |
| | LW3--4, 28 | Bossler | WA--20 | | WA--30 |
| | LW5--13 | Boswell | LW1--35 | Brigham | LW2--6 |
| | LE--16 | Bosworth | LW3--27 | Brindel | LW1--40 |
| | PA--19 | Boughtan | LE--23 | Brindman | LW1--17 |
| Bettridge | WA--39 | Boughton | LW3--10 | Brink | LW4--15 |
| Bew | LW3--11 | | WA--57 | Brisbon | LW4--8, 10 |
| Bickerton | KA--13 | Boulden | GR--13 | Briscow | WA--49 |
| Bicknow | LW1--19 | Boulon (or Benton) | CL--1 | Briskow | LW3--30 |
| Biebush | LW4--4 | Bounce | LW3--40 | | LW6--10 |

| | | | | | |
|------------|-----------------|------------|-----------------|-------------|-----------------|
| Bristol | LW1--17 | Bucking | LW3--25 | Campbell | LW5--7 |
| Britnall | LW1--35 | Buckingham | LW2--6 | | LW6--5 |
| Brittian | WA--11, 58 | Buckler | KA--14 | | GR--6, 11, 13 |
| Brittin | WI--7 | Buckley | LW2--22 | | PA--14, 49 |
| Britton | LW2--3 | Bucklin | LW1--4 | | WA--47 |
| Brockelsby | LW1--12 | Buckman | PA--9 | Canovan | LW5--33 |
| | LW3--32, 33 | Buckmaster | WA--51 | Cansdell | WI--1 |
| Brocks | LW1--39 | Buckner | LW3--29 | Cantrell | PA--51 |
| | KA--2 | | LW4--16 | Carey | LW1--14 |
| Brockway | PA--18 | Buk | LE--14 | Cargay | MA--23 |
| Broipar | LW4--7 | Bulk | LE--20 | Carlos | LW1--41 |
| Bromelsick | LW3--16, 18 | Bullean | WA--46 | | LW6--15 |
| Brookins | WA--14 | Bullene | LW4--15 | Carlson | LW3--12 |
| Brooks | LW1--13, 39 | Bullock | CL--1 | Carmean | LW1--43 |
| | LW2--30 | Bunton | LW3--24 | Carmen | LW1--27 |
| | LW3--10, 15, | | WI--7 | Carmichael | CL--12 |
| | 27, 28 | Burber | LW3--14 | Carnahan | MA--6 |
| | LW4--20 | Burdshuh | LW2--1 | Carnes | LW4--17, 18 |
| | LW5--3, 4 | Burer | LW2--23 | Carney | LE--23 |
| | CL--2 | Burgen | GR--5 | Carpenter | LW2--12, 17 |
| | KA--2 | Burgen | LW4--3 | | LW3--3 |
| | WA--25, 57 | Burgoon | WI--12 | | PA--26 |
| | WI--11 | Burgoon | LW3--4, 10 | | WA--55 |
| Brosman | PA--51 | Burke | LW4--2, 21 | Carper | LW4--10 |
| Brosson | LE--5 | Burlingame | LW1--25 | Carr | LW4--19 |
| Brotherton | LW1--36 | Burlingame | WA--14 | | LW6--2 |
| Brown | LW1--4, 10, 21, | Burlington | LW5--15 | | EU--25 |
| | 22, 23, | Burmean | WA--43 | | MA--18 |
| | 33, 37 | Burnet | WA--56 | Carrius | LW2--20 |
| | LW2--5, 12, 16, | Burnett | LW3--32 | Carroll | GR--3 |
| | 26, 33 | | LW6--1 | Carson | LW1--32 |
| | LW3--14, 33, 35 | | GR--2 | | WA--17, 32 |
| | LW4--12, 22 | | LE--3 | Carter | LW1--2 |
| | LW5--15 | | PA--34 | | LW2--25 |
| | CL--5, 8 | Burns | LW1--9 | | GR--8, 11 |
| | EU--2 | | LW2--1, 21 | | PA--46 |
| | GR--5 | | LW3--21, 33 | | WA--25, 26 |
| | KA--8 | | EU--38 | Cartwright | LW6--11 |
| | LE--6, 22 | | LE--26 | | CL--1 |
| | MA--12 | | WI--7 | | WA--34 |
| | PA--16, 27, 44 | Burroughs | WA--45 | Caruth | LW2--24 |
| | WA--19, 21, 22, | Burton | LW3--12, 14 | Caruthers | LW4--9 |
| | 23, 43 | Bushman | LW1--21 | Carver | LW5--6, 7 |
| | WI--7 | Busse | LW2--28, 29 | Cary | GR--3 |
| Browning | LW4--12 | Bussel | LW5--14 | | WI--6 |
| | LE--13 | Bussell | LW5--14 | Casaiger | WA--34 |
| Brubake | LW1--21 | Buswell | WA--38 | Case | LW5--9 |
| Brubaker | MA--15 | Butel | PA--22 | Cased | LW3--3 |
| | WI--6 | Butler | LW2--2 | Casper | LW5--8, 10 |
| Bruce | LW5--14 | | LW5--14 | Cassad | LW3--3 |
| | WA--14 | | EU--28 | Casway | LE--17 |
| Brueggen | EU--39 | Buttermore | LW3--2 | Caswell | WA--10 |
| Bruening | PA--46 | Byerly | LW6--7 | Catharin | LW3--29 |
| Bruggen | LW4--1 | | PA--10 | Causer | KA--16 |
| Bruke | LW2--35 | | WI--8 | Cavanaugh | LW3--6, 26 |
| Brumbaugh | PA--16 | Byers | PA--50 | | GR--12 |
| Brundage | GR--4 | Byrd | WA--12 | | PA--48 |
| | WI--5 | | | Cavaness | PA--48 |
| Brune | LW3--20 | Cade | LW1--38 | Caylor | CL--1, 2, 9, 10 |
| Brungan | LW2--20 | | GR--8 | Cednburg | LW3--39 |
| Bryant | LW2--3 | | WA--3, 7, 34 | Ceiver | LW3--5 |
| | PA--18 | Cadwell | LW4--14 | Cewgill | PA--50 |
| | WA--7 | Cady | GR--9 | Chadbourne | PA--45 |
| Bryson | WA--35 | Caldwell | LW3--7 | Chadwick | LW1--21 |
| Buch | LW3--18, 19 | Callahan | LW3--34 | | LW3--27 |
| | LW4--19 | | LW4--1 | | EU--20 |
| Buchanan | LW4--7 | Callan | WI--11 | Chaffee | LW5--3 |
| Buchheim | KA--3, 6 | Callaway | LW3--37 | Chaffer | LW5--3 |
| Buck | CL--19 | Cameron | WA--1 | Challis | MA--10 |
| | EU--408 | Campbell | LW1--10 | Chamberlain | LW1--21 |
| | PA--47 | | LW3--21, 26, 42 | | PA--43 |
| | WA--33, 34 | | LW4--17 | Chambers | WA--37 |
| | | | | Chandler | LW1--8, 9 |

| | | | | | |
|--------------|------------------|-------------|--------------|-------------|----------------|
| Chaple | LW3--13 | Clayborn | LW5--5 | Cook | LE--23 |
| Chapman | LW1--41 | Claybourne | LW5--5 | | MA--5 |
| | LW2--8 | Claypool | WA--46 | | WA--52 |
| | LW3--37 | Clayschultz | CL--18 | Coon | EU--38 |
| | LW4--20 | Clayton | PA--48 | Cooper | LW5--10 |
| | CL--3 | Clifford | CL--2 | Coory | LW4--12 |
| | PA--47 | Cline | LW2--7, 10 | Coote | LW2--6 |
| Charles | LW3--34 | | LW5--2 | Copp | EU--40 |
| | EU--27 | | WI--2, 8 | Cora | WI--4 |
| Charlotte | LW3--6 | Clinn | LW2--10 | Coral | WA--54 |
| Charlton | LW1--13, 26 | Clinton | LW5--11 | Corbin | LW4--18 |
| | WA--45 | Clock | LW3--27 | | PA--42 |
| Cheaney | PA--2 | Cloud | LW4--6 | Corder | MA--4 |
| Cherry | LW2--22 | Clymonts | LW2--26 | Cordley | LW1--6 |
| Chesholm | LW4--7 | | WA--43 | Corel | LW6--11, 12 |
| Chester | LW1--21, 33 | Coarse | LW2--33 | Corey | LW1--31, 41 |
| Chevalier | WA--37 | Cobbin | LW1--3 | Corkhill | PA--28 |
| Childers | LW3--3 | Coble | LW6--17 | Cormack | EU--22 |
| Childs | LW1--41 | Cochran | LW3--12 | Cornelius | WA--31 |
| | LW5--13 | Cockins | LW2--25 | Cornwell | LW4--21 |
| | EU--2, 29 | | LW3--33, 34 | Corporal | LW6--15 |
| Chishum | LW4--7 | | WA--45 | Correll | LW4--1 |
| Chitzer | LW3--30 | Cockland | LW1--4 | Coryell | LW2--32 |
| Chockley | WI--5 | Cockreham | WA--22 | Cosgrove | LW3--33 |
| Chollai | WI--5 | Coe | PA--27 | Cosley | LW1--24 |
| Christ | LW1--10 | Coffey | LW4--11 | | LW2--19 |
| Christenson | LW3--42 | Coffin | LW2--18 | | KA--12 |
| Christian | LW2--16, 31, 32 | | LW3--29 | | LE--17 |
| | LW6--2 | | GR--5 | Cosway | LE--17 |
| | CL--8 | Coger | LW1--32 | Coton | LW6--19 |
| | MA--7 | Cogle | LW1--41 | Cotte | LW2--6 |
| Christianson | LW4--6 | Cohn | EU--44 | Cotterman | MA--19 |
| Christison | LW4--6, 7 | Coker | LW6--1 | Cotton | LW6--19 |
| Christy | KA--17 | | GR--10 | | PA--15 |
| Chrizer | LW2--17 | Colbert | LW1--37 | Coulter | LW3--22 |
| Chrowell | WA--5 | Cole | LW1--37 | | LE--10, 25 |
| Chruther | CL--13 | | LW2--1, 12 | Coursen | MA--17 |
| Chrysler | LW1--38 | | LW3--13 | Coursey | GR--3 |
| | LW2--17 | | LW5--9 | Couse | LW2--33 |
| Church | LW4--9, 15 | | LW6--8 | Covey | LW1--31 |
| | LW5--3 | | EU--7, 8, 29 | | LW5--9 |
| Churchbaugh | WI--9 | | MA--1 | | GR--8 |
| Churchfield | WA--22 | Coleman | LW2--8 | Cowan | KA--13 |
| Churchill | LW1--31 | | CL--16 | Cowgill | PA--25, 50 |
| | WA--10, 27 | Colliers | PA--5 | Cowhart | LW2--9 |
| Cidenburg | LW3--39 | Collins | LW1--19 | Cox | LW3--24, 28 |
| Cillip | LW6--12 | | LW3--30 | | LW6--19 |
| Ciseness | LW4--4 | Colman | LW6--4 | | EU--10, 11, 20 |
| Civer | LW3--5 | | KA--12 | | MA--5 |
| Clark | LW1--3, 11 | Colsin | WA--46 | | WA--26, 56 |
| | LW2--16 | Colton | LW1--36 | Coy | LW2--7 |
| | LW3--13, 15, 21, | | WA--35 | | GR--2 |
| | 28, 30, 42 | Colwell | LW4--17 | Cracklin | LW1--13 |
| | LW4--24 | | WA--31, 55 | Cradit | PA--26 |
| | LW5--13 | Colyer | LW3--14 | Craft | MA--17 |
| | LW6--1, 13, 14 | Comer | LW4--14 | Craig | LW1--6 |
| | EU--2, 5, 34 | Comstock | LW3--44 | | LW5--11, 12 |
| | LE--4 | Conant | CL--17 | | LW6--1 |
| | MA--14, 15 | Cone | LW4--8, 9 | Craigmile | LW1--23 |
| | PA--5, 15, 24, | Conelly | EU--41 | Craigmiller | LW1--1 |
| | 29, 32, | Conger | EU--30 | Cramer | LW1--24 |
| | 36, 37 | Conneill | LW4--18 | | LW2--10 |
| | WA--9, 15, 20, | Conner | LW1--34 | | LW3--28 |
| | 37, 40, | | LW2--9 | | LW5--14 |
| | 45, 56 | | LW6--14 | | WA--29 |
| | WI--5 | | EU--15 | Crandell | LW1--40, 41 |
| Clarke | LW2--34 | Conns | LW5--15 | | LW6--20 |
| | LW3--21 | Conut | KA--18 | | KA--2 |
| Clast | KA--20 | Conut | KA--20 | Crater | PA--13 |
| Clay | LW4--2 | Conway | MA--11, 18 | Crawford | WA--28 |
| | LW5--4 | Cook | LW1--4, 5 | Creel | CL--15 |
| | LW6--7 | | LW5--11 | Crew | LW2--5 |
| | | | | Criely | LW1--17 |

| | | | | | |
|--------------|------------|--------------|-----------------|------------|-----------------|
| Criely | LW4--24 | Davenport | EU--27 | Doak | WA--47 |
| Crily | LW1--17 | Davidson | LE--7, 19, 22 | Dobbin | GR--13 |
| Crippen | LW1--33 | Davis | LW1--5, 8, 25, | Dobbins | LW1--38 |
| Crisp | EU--1, 34 | | 28, 32 | | PA--44 |
| Criss | LE--14 | | LW2--26 | Dodd | LW6--17 |
| Cristian | LE--21 | | LW4--1, 7, | Dodder | MA--17 |
| Criter | LW1--31 | | 10, 20 | Dodge | LW2--17 |
| Crites | LW3--38 | | LW6--11 | | LW5--2 |
| | MA--23 | | CL--17 | | LW6--17 |
| Croo | WI--11 | | EU--13, 24, | | PA--51 |
| Crosby | LW1--3 | | 25, 29 | Dodridge | LW5--3 |
| | PA--46, 49 | | PA--19, 35, 37 | Dolan | WA--12, 42 |
| Crouch | LW2--27 | | WA--21, 23, 24, | Dolbee | MA--19 |
| | LW5--7 | | 43, 47, 59 | Dolisi | EU--17 |
| | LW6--12 | Davy | EU--3 | Dollinger | EU--38 |
| | GR--14 | Day | LW1--21 | Donahue | LW1--38 |
| Crow | LW2--21 | | LE--22, 24 | | LW3--2 |
| Crowder | LE--11 | Deal | LW5--15 | Donaldson | LW5--15 |
| Cruezan | WI--2, 13 | Dean | LW6--2, 8 | | PA--49 |
| Crumbaker | WI--7 | | CL--5, 6, | | WA--26 |
| Crummett | LW3--18 | | 13, 14 | Donnelly | LW2--16 |
| Crump | LW3--30 | | PA--23, 44 | | LW3--43 |
| | WA--56 | Deay | EU--25, 27 | | LW4--9 |
| Crumrine | EU--30 | | PA--36, 38 | Donovan | LW2--20 |
| Crusor | LW3--16 | Dee | LW3--43 | | LW3--42 |
| Culbertson | LW3--14 | Deering | LW5--11 | | WA--19 |
| Cummings | LW5--9, | Deheck | WI--1 | Doolittle | WA--33 |
| | KA-18 | Deichtman | LW4--12, 13 | Doom | PA--45 |
| | LE--12 | Delahunty | LW3--11 | Dorrance | LW4--14 |
| Cummins | MA--20 | Delesdennaen | WA--44 | Dorsey | LW4--23 |
| Cunningham | LW2--34 | Delesdernier | LW3--1 | | WA--2, 53 |
| | GR--1 | Demery | LW1--37 | Dougherty | EU--23 |
| | LE--1 | Demming | PA--48 | | WA--10 |
| Cunnington | LW4--3, 16 | | WA--30 | Douglass | LW1--9 |
| Curlett | | Denehou | KA--10 | | KA--20 |
| Currier | WA--22 | Denland | LW2--13 | | WA--36 |
| Curry | GR--5 | Dennison | LW3--23 | Dow | PA--10 |
| Curtis | LW2--25 | Dennweiler | KA--10 | Downing | LW5--2 |
| | LW5--10 | Deppe | PA--42 | Doyle | LW4--9 |
| | CL--5 | Dersham | LW3--5 | Drake | LW2--27 |
| | WA--46 | Deskins | KA--18 | | LW5--12 |
| Curtiss | LW1--41 | | WI--4, 5, 6 | | LW6--2, 4 |
| | LW4--14 | Dessery | LW4--8 | Draper | LW1--4 |
| | LW5--10 | Devereaux | LW1--43 | | KA--18 |
| | WI--3 | Devereux | LW3--44 | | WA--50, 60 |
| Cushingberry | LW6--19 | Devine | LW2--35 | Dresden | LW2--7 |
| Custard | LE--1 | | WA--25 | Dresser | LW2--27 |
| Cutler | LW1--18 | Deweese | PA--47 | | CL--4 |
| Cutter | PA--5, 9 | Dey | LW2--30 | | WA--59 |
| | | | LW3--2 | Drew | WA--61 |
| Dailey | LW4--15 | Dibert | PA--50 | Drisbach | LW2--29 |
| Dale | WA--2 | Dick | EU--37 | Driscoll | LW2--17 |
| Dalee | LW2--27 | Dickenson | PA--45 | Drisdome | WA--48 |
| DaLee | WA--59 | Dicker | LW6--7 | Duck | CL--7 |
| Dallas | PA--48 | Dickins | LW4--22 | DuFee | KA--14 |
| Dalston | LE--16 | Dickson | WA--58 | Duff | PA--10 |
| Damm | LE--3 | Diggins | LW4--24 | Duffee | WA--61 |
| Damuth | WA--37 | | LW5--10, 11 | Duke | KA--18 |
| Daniels | LW1--41 | Diggs | LW3--34 | Duley | EU--10 |
| | LW6--2, 10 | | LW4--20 | Dullenbeck | WA--24 |
| | PA--42 | Dillard | LW1--33 | Dumars | PA--10 |
| | WA--7 | Dillon | LW6--21 | Dumm | LE--3 |
| Darling | LW6--18 | Dime | LW1--20 | Dummer | LE--6 |
| | EU--43 | Dimera | LW3--15 | Dunbar | LW1--12, 18 |
| Darmie | GR--5 | Dimery | LW3--15, 24 | | WA--38 |
| Darnell | PA--49 | Dinsmoor | LW4--3 | Duncan | LW2--3, 35 |
| Darno | LE--20 | Dinterman | EU--32 | | LW4--6, 24 |
| Darsey | WA--53 | Disbrow | CL--11, 12 | | LW5--7 |
| Dart | LW3--26 | Dix | LW1--19 | | LW6--20 |
| Dauen | KA--1 | Dixon | LW3--22 | | LE--1, 6, 7, 16 |
| Daven | KA--1 | | MA--3 | | WA--45 |
| Davenport | LW1--36 | Doak | LW1--26 | Dungan | PA--45 |

| | | | | | |
|-----------|-----------------|------------|----------------|-------------|-----------------|
| Dunlap | LW3--4 | Ellis | WA--19 | Faxon | LW3--14 |
| Dunn | LW2--33 | Ellison | LW5--2 | Fearing | WA--26 |
| | LW3--33 | Elston | WI--12 | Fearor | PA--37 |
| | MA--13, 18 | Elwell | PA--1 | Feass | WA--11 |
| | PA--8, 13 | Ely | LW2--9 | Featherston | MA--7 |
| | WA--15 | Embold | LW4--10 | | WI--2 |
| Dunnivan | LW2--20 | Emerson | LW4--2 | Feggins | LW1--8 |
| Duno | LE--8 | | LW6--10 | Feil | LW2--28 |
| Durby | KA--8 | Emery | LW1--37 | Feldhoff | EU--43 |
| Durgin | PA--48 | | KA--20 | Fendt | EU--37 |
| Durland | LW3--36 | Emiley | WA--19 | Fenoughty | PA--23 |
| Durr | EU--39 | Emmett | LW1--13 | Fenton | PA--13 |
| Duster | KA--3 | Emory | LW1--7 | Ferguson | LW3--43 |
| Dutton | LW3--27 | English | LE--11 | | LW6--19 |
| | WA--5 | Engstrom | WA--55 | | WA--8 |
| Duval | PA--36 | Eno | WA--52 | Ferrill | LW3--19 |
| Duvell | GR--11 | Enos | WA--54, 55 | Ferris | LW4--10 |
| Duyer | PA--34 | Eppley | WA--53 | | LE--23 |
| Dwyer | PA--37 | Epperson | LW4--1, 3 | Fettors | LW6--10 |
| Dyer | LW2--1, 29 | Epple | LE--16 | Fiedler | LW1--22 |
| | PA--26 | | LW4--6 | Field | W1--39 |
| | | | EU--40 | | LW4--9 |
| Eads | LW2--15 | Erdemiller | LW2--18 | Fields | LW1--41, 42 |
| Eager | WA--52 | Erickson | LW1--6 | | EU--8 |
| Earl | WA--40 | Ernst | EU--8 | | WA--9, 18, 61 |
| Earle | LW1--31, 38 | Esick | WA--26 | Figgins | LW1--8 |
| | LW2--20 | Esldruff | LW1--22 | Filmore | LW1--23 |
| | LW4--16 | Essex | EU--8 | Filpel | MA--2 |
| Earnshaw | WA--32, 33 | Essie | LW2--31 | Fincher | LW5--13 |
| Eastman | LW5--6 | Esson | GR--2 | Finchers | LW6--3 |
| Eaton | EU--12 | Esterly | LW3--17 | Fingerly | MA--24 |
| | PA--19 | Etson | LW1--9 | Finley | LW3--8 |
| Eberhart | KA--3 | Eubanks | WI--13 | | KA--20 |
| | PA--4, 10, 11 | Evall | CL--12 | Finney | LW1--30, 40, 42 |
| | WI--2, 4 | Evans | LW1--40 | Fisdale | LW1--34 |
| Eberly | EU--42 | | LW2--15 | Fish | LW6--16, 17 |
| Ecke | LW2--17 | | LW4--8 | Fishbaugh | MA--21 |
| Eckillies | LW2--23 | | LW5--12 | Fishburn | MA--15 |
| Eckman | WA--7 | | GR--1 | Fisher | LW1--30 |
| Edards | LW5--7 | | KA--11, 12 | | LW3--15, 27 |
| Eddy | LW1--12 | | LE--4 | | LW4--6, 14 |
| Eder | EU--3, 38 | | PA--20 | | LW5--6 |
| Edham | LW3--22 | | WA--14, 18, | | EU--37 |
| Edhom | LW3--22 | | 19, 57 | | LE--2 |
| Edmund | WA--48 | | WI--4, 6, 8 | | MA--4, 5, |
| Edmundson | WA--16 | Everett | LW4--16 | | 16, 19 |
| Edridge | WA--55 | Evetts | WA--43 | | PA--28 |
| Edson | CL--9 | Evilsisor | PA--19 | | WI--2 |
| | WA--33 | Ewing | LW1--28 | Fitch | LW4--4 |
| Edwards | LW1--10, 32, 39 | | LW2--2, 11, 21 | Fitton | LE--21 |
| | LW2--16 | Eyre | LW3--5 | Fitzgerald | PA--49 |
| | LW3--29 | | | Fitzhue | LW6--12 |
| | LW4--8, 14 | Fagana | LW4--18 | Fitzhugh | LW3--19 |
| | LW5--7, 8 | Fager | LW2--20, 21 | | GR--13 |
| | EU--24, 42 | | WA--52 | Fitzler | LW2--19 |
| | WA--55 | | WI--11 | Fitzpatrick | LW3--2 |
| Eggers | EU--26, 39 | Fall | WA--61 | | LW6--8 |
| Eggert | LW1--16 | Falley | WA--41 | | KA--1 |
| | WA--31, 32 | Fallwell | CL--18 | | LE--8, 20 |
| Eggleston | LW3--1 | Faltz | KA--2, 7 | Fix | KA--5 |
| Eisele | EU--5 | Faris | LW1--42 | Flang | LW2--3 |
| | | | KA--1 | Flare | PA--33 |
| | | Farley | LW1--40 | Fleer | WI--6 |
| | | Farmer | EU--11 | Fletcher | LW1--40 |
| | | Farnsworth | LW1--34 | | LW4--7, 8 |
| | | Farris | WA--28 | | WI--14 |
| | | Farriss | LE--13 | Flinn | LW1--43 |
| | | Farwell | LW4--9 | | LW4--10, 18 |
| | | Fawcett | PA--1 | | WA--38 |
| | | Fawl | MA--2 | Flint | LW1--18 |
| | | Faxon | LW1--10, 12 | Flinton | LW1--19 |
| | | | LW2--8 | Flintum | LW1--19 |

| | | | | | |
|--------------|-----------------|----------------|----------------|----------------|-----------------|
| Flora | WI--9 | Fuller | WA--52 | Gillespie | LE--18 |
| Flory | MA--6 | Fullerton | PA--32, 33 | Gillett | LW4--8 |
| | WI--2, 3, 5, 8, | Fulton | LW6--8 | Gillette | GR--6 |
| | 9, 10, 12 | Funk | WI--8 | Gilley | LW1--2 |
| Fluke | LW2--30 | Funkhouse | LE--20 | Gillham | LW1--36 |
| Fogle | WI--1 | Funnel | LW4--3 | Gilliland | WA--26 |
| Foley | LW3--7 | Furness | LW2--7 | | WI--6, 8 |
| Follitt | LW4--8 | Furze | KA--2 | Gillman | LW2--18 |
| Fontor | LW3--18 | | | | WA--25 |
| Foote | LW1--9, 31 | Gabriel | LW3--27 | Gillmore | LW1--13, 32 |
| Force | LW6--16 | | EU--11, 25, 30 | | LW2--27 |
| Ford | LW4--2, 11, 12 | Gaddis | WI--3 | | LW4--10 |
| Forlin | LW5--3 | Gage | LW2--31 | Gilman | PA--18 |
| Forsyth | LW3--3, 30 | | LW6--2 | Gillmore | EU--31 |
| Forsythe | WA--30 | Gail | LW3--11 | | GR--13, 14 |
| Fortner | EU--5, 33, 34 | Gainer | LW1--3 | Gilson | WA--27 |
| Fortson | WA--8 | Gaines | LW1--30 | Gingerich | WA--58 |
| Forward | LW3--13 | Galagher | WI--10 | Gingerick | WI--4 |
| | LW6--6 | Gale | WI--3 | Givens | LW2--16 |
| Foster | LW1--23 | Gall | LW1--19 | | LW6--16 |
| | PA--21 | Gallegher | LE--17 | | LW4--8, 12, 16 |
| | WA--14 | Galletly | PA--35 | | EU--14 |
| Foutor | LW3--18 | Gamble | WA--49 | Gladden | LW3--38, 39 |
| Fowell | LW2--21 | Ganmer | WA--31 | Glaser | PA--31 |
| Fox | LW2--13 | Ganner | WA--16 | Glass | WA--61 |
| | CL--9 | Gardner | LW3--12 | Glassor | LW3--17 |
| | EU--36, 37 | | LW4--8, 18 | Glathart | LW4--21 |
| | KA--2, 9 | | EU--29 | Gleason | LW2--34 |
| | WA--19 | | MA--12 | | GR--1 |
| Foxen | KA--17 | Garin | WA--26 | | WI--10 |
| Frame | PA--45 | Garrett | LW2--25 | Gleed | LW2--30 |
| Francis | LW1--19 | | GR--7 | | LW3--6 |
| | LW6--1 | | LE--17 | Glen | LE--15, 17, 19 |
| Frank | LW2--3 | | WA--32, 46 | Glesby | KA--17 |
| Franklin | LW1--22 | Garrill | LE--6 | Glidden | WI--8 |
| | LW4--8 | Garvin | EU--31 | Gluyas | EU--8 |
| | LW5--5 | Gaskell | LW1--18 | Goit (or Gert) | PA--8 |
| | WA--39 | | GR--2 | Good | LW1--29 |
| Frazer | LW1--17 | Gaume | LW5--13 | Goodman | LW2--17 |
| | LW6--1 | Gaumer | EU--18 | Goodrich | LW2--17 |
| Frazier | GR--13 | Gause | EU--29 | Goodwell | LW6--18 |
| | MA--9 | Gaver | LW3--11 | Gordon | PA--49 |
| Frederickson | LW3--36 | Gavin | WA--26 | Gormeley | LW1--31, 41, 42 |
| Fredrickson | WA--59 | Gay | LW2--20 | Gormely | LW2--27 |
| Freeman | LW1--20 | Geelan | LE--1 | Gormerley | LW1--41 |
| | KA--16 | Gellman | LW1--29 | Gorrula | WA--44 |
| | PA--38 | Gemmell | LW1--9 | Goslin | LW2--32 |
| Freese | WI--1 | Gentry | LW3--9 | Goss | WA--49 |
| French | LW1--17 | | LE--11 | Gossman | EU--12 |
| | PA--46 | George | KA--6 | Gould | LW3--7 |
| | WA--60 | | MA--11 | | WA--33 |
| Fricker | LW4--7 | | WA--9 | Graeber | LW4--5, 18 |
| | LW6--17 | Georgii | PA--11 | Graf | EU--42 |
| Frisbie | LW4--19 | Geria | KA--19 | Graham | LE--5 |
| Frishie | LW4--19 | Gerstenberger | EU--23 | Granger | LW1--29 |
| Fritchie | LW6--17 | Gert (or Goit) | PA--8 | Grant | LW2--21 |
| Fritz | LW1--43 | Getker | EU--41 | | LW3--2 |
| | LW5--16 | Geyer | CL--13 | | WA--5 |
| | PA--10, 51 | Gibbs | WA--33 | Graoeley | LW3--29 |
| Frost | PA--48 | Gibson | EU--5 | Graton | LW4--17 |
| Fruin | MA--17 | | WA--38, 39 | Graveley | LW3--29 |
| Fry | LW1--30 | Giffin | LW2--33 | Gray | LW1--20, 43 |
| | LW3--12 | | WI--7 | | LW3--2, 5 |
| | EU--8 | Gilberg | LW1--28 | | LW6--15 |
| | KA--1 | Gilbert | WA--30 | | GR--9 |
| | PA--20 | Gilges | WI--13 | | WA--59 |
| | WA--40, 41, 61 | Gill | LW1--3, 19 | Green | LW2--13, 16, 25 |
| Fuell | LW1--3 | | LW3--20 | | LW3--3, 33 |
| Fulkerson | WA--61 | | LW4--15 | | LW5--12 |
| Fuller | LW1--42 | | PA--4, 14, 51 | | LE--24, 25 |
| | MA--23 | | WA--21 | | PA--26 |
| | PA--41 | Gillberg | LW1--28, 29 | | WA--24 |

| | | | | | |
|------------|--------------|------------|-----------------|------------|------------------|
| Greenle | EU--41 | Hagerty | LW3--37 | Harper | WA--36 |
| Greer | LW2--16 | Hagglent | WA--39 | Harfell | CL--6, 7 |
| Gregg | LW1--31 | Hagon | WA--29 | Harries | PA--28 |
| | LW2--2 | Hague | LW3--17 | Harrington | LW2--8 |
| Greggs | LW1--9, 25 | | PA--51 | | WA--53 |
| Gregory | LW2--1 | Haines | WI--14 | Harris | LW1--15, 19, 20, |
| Greiner | EU--17, 34 | Halburt | MA--13 | | 21, 29 |
| Gren | LW2--16 | Halderman | MA--7 | | LW2--10 |
| Gress | KA--9 | Hale | LW1--17 | | LW3--22, 25, 32 |
| Greswold | LW1--2 | | LW4--16 | | LW4--24 |
| Grew | LW2--33 | | WA--39 | | LW5--6, 10 |
| Grey | LW6--15 | Haley | EU--42 | | LW6--3, 5, 6, 12 |
| Griebel | EU--38 | Hall | LW1--6, 10 | | EU--3, 12, 33 |
| Griener | MA--14, 18 | | LW2--8, 9 | | KA--9 |
| Griffin | LW2--12, 28 | | LW3--20 | | LE--12, 16, 19 |
| | EU--28 | | LW5--4, 5 | | PA--20 |
| | WA--19 | | LW6--2 | | WA--58 |
| Griffis | PA--10 | | KA--16 | | WI--5 |
| Griffith | LW1--14 | | WA--3 | Harrison | KA--17 |
| | LW2--12 | | WI--3 | | WA--8 |
| | LW3--10, 37 | Hallmark | CL--12 | Harshman | WI--11 |
| | PA--22, 43 | Halms | WI--3 | Hart | LW1--34 |
| | WA--49 | Halsing | WA--3 | | LW4--11 |
| | WI--3 | Ham | EU--27 | | LW5--1 |
| Griffiths | WA--21 | Hamich | WA--47 | Hartig | GR--3 |
| Griggs | LW3--1 | Hamilton | WA--1 | | EU--41 |
| | LW4--23 | | LW3--12, 20, 31 | Hartman | LW3--40 |
| Grischow | EU--25 | | LW4--22 | | MA--23 |
| Grisham | EU--7, 12 | | GR--10 | | WA--48 |
| Grissette | LW3--7, 8 | | WA--22 | | WI--8 |
| Grisso | MA--22 | | WI--2, 14 | Hartsman | KA--3 |
| Grissom | LW2--24 | Hamlin | WA--53 | Hartup | LE--3 |
| Grissorn | LW2--17 | Hammond | LW2--20, 23, 24 | Harvey | LW3--10 |
| Griswold | LW1--2 | | KA--10, 16 | | LW5--6 |
| | LW3--16 | | WI--12 | | LW6--13, 19 |
| Groh | LW1--30 | Hampdon | LW1--37 | | EU--5 |
| Gromley | LW1--30 | Hampton | LW1--37 | | WA--36 |
| Grone | CL--9 | Hancock | LW2--21 | Harvin | LW1--38 |
| Grose | LW6--21 | | PA--21 | Harwood | EU--7 |
| Grosheider | LW1--13 | Hanee | LW3--25 | Hase | LW4--9 |
| Groshider | LW1--13 | Hanes | WA--11 | | MA--20 |
| Gross | LW2--6 | Haney | LW5--1 | Haskell | LW4--5 |
| | PA--25 | | PA--28 | | WA--46, 60 |
| Grostoff | WA--40 | Hannam | PA--41 | Haskins | MA--21 |
| Grovenor | LW3--43 | Hannold | LW4--19 | Haslett | LW3--29 |
| Grover | WA--12 | Hanscom | WA--39, 40 | Hastie | PA--12, 13 |
| Grow | LW5--7 | Hanscon | WA--40 | | WA--17 |
| Guam | LW6--8 | Hansom | LW2--15 | Hatch | LW1--26, 27 |
| Guest | WA--59 | Hanson | LW2--15 | | LW4--13 |
| Guffin | LW2--28, 33 | | PA--35 | | WA--47 |
| Gufler | EU--42 | Harbrick | LW1--39 | Hatcher | CL--12 |
| Guinn | EU--11 | Harbour | WI--8 | Hathaway | LW5--10 |
| Gunn | LW1--6, 7 | Hard | LW2--29 | Hatton | LW4--17 |
| | LW2--35 | Hardin | LW5--14 | Hatz | LW4--24 |
| Gunter | LW3--28 | Harding | LW2--13 | Haure | EU--17 |
| Gutknecht | EU--27 | | LW5--14, 15 | Haus | EU--27 |
| Gutsmuthel | EU--41 | | MA--20 | Hauter | LW4--24 |
| | | | WI--10 | Havens | PA--17 |
| Haas | PA--36 | Hardterfer | MA--13 | Haver | CL--17 |
| | WI--1, 2, 13 | Hardwick | WA--60 | Hawk | KA--9 |
| Haberlein | LW4--1 | Harford | PA--46, 47, 48 | Hawkins | LW1--10 |
| Hackley | GR--10 | Hargus | PA--28 | | LW3--9, 10 |
| Haddock | LW2--22 | Harlan | PA--18 | | LW6--20, 21 |
| Hadley | LW1--30 | Harley | WA--13 | Hawthorne | LW1--32 |
| | LW2--25 | Harlow | LW4--4 | Hay | WA--11 |
| | LW4--5 | Harmon | LW6--6, 7 | Hayben | LW4--2, 13 |
| Hadlond | EU--4 | | CL--7 | Hayden | LW4--2, 13 |
| Haelig | LW4--4 | | GR--7 | | LW6--14 |
| Haelig | EU--42 | | WA--20 | | LE--18 |
| Haelsig | EU--41 | Harpell | WA--7 | Hayes | LW1--4, 11, 24 |
| Hafer | LE--2, 16 | Harper | LW1--19 | | LW3--2, 18 |
| Hagan | LW3--39 | | LW4--12, 19 | | LW6--20 |
| | WA--56 | | | | |

| | | | | | |
|-----------------|---------------|-------------|-----------------|------------|-----------------|
| Haynes | LW6--8 | Higgle | LW2--32 | Hoopes | PA--28 |
| Hays | PA--36, 38 | Hiland | WA--13 | Hoover | MA--4, 19 |
| Hayslett | WI--2 | Hilderbrand | KA--5 | | WI--6 |
| Hayworth | LW1--25 | Hilkey | PA--16 | Hope | LW3--15 |
| Heathman | CL--9 | Hill | LW1--12 | | WI--9 |
| Hecox | MA--19 | | LW2--12 | Hopkins | CL--11 |
| Hefner | MA--6 | | LW4--6 | | GR--1 |
| Heiffner | WI--1 | | EU--29 | | PA--6 |
| Heinrich | EU--40 | | KA--7, 8 | | WA--8 |
| Heise | LE--4 | | LE--2, 4 | Hopper | GR--4 |
| Heisey | LE--15 | | WA--9, 10, 17 | Horn | LW1--7, 32, 41 |
| Heldstrom | CL--10 | Hilt | EU--34 | | LW3--27 |
| Heley | EU--32 | Hilton | EU--32 | Hornbarger | WI--1 |
| Hellstrom | CL--10 | Himoe | LW1--26 | Hornsby | LW1--24 |
| | WA--18, 19 | | WA--48 | Horrell | WI--3, 12 |
| Helm | PA--33 | Hindman | WI--10, 12 | Horton | LW1--15, 33, 34 |
| Helstrom | MA--19 | Hine | CL--6 | Houak | LW3--40 |
| Heming | KA--15 | Hines | LW3--26 | Houghtelin | LW1--12 |
| Hemphill | PA--12 | | LW4--18 | Houks | LW3--31, 32 |
| Henan | PA--22 | | WI--7, 9 | House | LW2--2 |
| Henderson | LW4--5, 6 | Hinman | CL--6 | Houseman | PA--33 |
| | EU--6 | Hitchcock | LW1--2 | Houser | WI--5 |
| | KA--15 | | WA--5 | Houston | LW1--11, 38, 43 |
| | PA--47 | Hitzinger | LW1--22 | | LW6--7 |
| | WA--16 | Hoadley | LW2--24 | | CL--12 |
| Hendman | WI--4 | Hoag | LW2--10, 18, 19 | Hover | LW3--6 |
| Hendricks | LW4--15 | | LW3--3 | Hovey | WA--48 |
| | KA--7 | | LE--15 | Howard | LW2--19, 20 |
| Hendry | LW3--10, 11 | | WA--36 | | LW5--8 |
| | WA--17, 42 | Hoagg | EU--29 | | LW6--7 |
| Heney | LW5--1 | Hobbs | EU--10, 31 | | CL--17 |
| Henley | LW2--9 | Hocken | LW2--17 | | LE--18 |
| | LW6--18 | Hodge | LW3--31 | | PA--16, 28 |
| Henly | EU--28 | Hodges | LW2--23 | | WA--34 |
| Henne (or Hume) | LW3--27 | Hodgman | LW1--7 | Howe | LW2--34 |
| Hennesey | LE--3, 20 | Hofer | KA--14 | | CL--12 |
| Henniss | LW2--9 | Hogan | LW3--34 | | GR--7 |
| Henry | LW2--2, 3, 27 | | WI--8 | Howell | LW1--18 |
| | LE--5 | Hoge | CL--15 | | LE--25 |
| Henshaw | EU--4, 24, 29 | Hogh | LW1--11 | | WA--20 |
| Hensleman | KA--17 | Holbert | CL--10 | Howland | EU--10 |
| Henson | LW1--23, 39 | Holbrener | WI--13 | Howlett | WA--12 |
| Heone | LW1--38 | Holcom | WA--17, 18 | Hoysradt | LW5--4 |
| Herard | PA--37 | Holen | LW1--32 | Hoyt | LW1--27 |
| Herbert | LW1--20 | Holland | LW1--41 | | LW6--10 |
| Herbs | LW1--20 | | LW3--23 | | WA--45 |
| Hernell | EU--38 | Hollenberg | LW3--31 | Hubbard | CL--6 |
| Herning | PA--4 | Hollenberry | LW3--31 | Hubble | LW4--21 |
| Herold | EU--1 | Hollinger | LW6--16 | Huber | EU--38 |
| Herondon | GR--11 | Hollister | LW1--24 | Hubert | WA--38 |
| Herr | WA--54 | Hollow | WA--44 | Huck | LW3--18 |
| | WI--10 | Holloway | LW2--25 | | EU--23 |
| Herrick | LW3--30 | | WA--19 | Huddleston | CL--12 |
| Herrington | LW1--43 | Hollowell | EU--24 | | WA--41 |
| | LW2--28 | Holman | LW5--6 | Hudson | LW2--1 |
| | LW3--26 | Holmes | LW1--6, 23 | Hugenot | PA--41, 42 |
| | LW4--23 | | EU--8 | Huggard | LW2--13, 14 |
| Herron | LW3--25 | | PA--12, 17 | Hughenet | WA--45 |
| Hershall | KA--2 | | WI--3 | Hughes | LW4--1 |
| Hertzler | WI--10 | Holms | LW1--22 | | LW5--13 |
| Heskinson | PA--7 | | WI--3 | | EU--11 |
| Hess | LW4--1 | Holsburg | WI--11 | | GR--6 |
| Hestman | WI--8 | Holstein | LW2--25 | | LE--10 |
| Hettick | LW2--30 | Holt | LW1--3 | | PA--37 |
| Hewitt | LW1--2 | Holum | CL--13 | Hughs | LW1--35 |
| | LW5--6 | Honak | LW3--40 | | LW2--13 |
| Hiatt | MA--10 | Hone | LW3--25 | | LE--23 |
| Hibbard | LW2--16 | Hones | WA--46 | | PA--40, 42 |
| Hicks | LW4--8, 10 | Honnald | LW4--19 | Hughson | WA--11 |
| | LW6--9 | Hood | LE--24 | Hulbert | LW2--3 |
| Hidden | LW3--30 | Hook | KA--13 | Hull | CL--17 |
| Higgins | LW2--30 | | WA--13 | | KA--7 |

| | | | | | |
|-----------------|------------------|-----------|-----------------|------------------------|-----------------|
| Hume (or Henne) | LW3--27 | Jaeschke | WA--28 | Jones | MA--3 |
| Humphrey | PA--46 | Jaescphs | LW1--20 | | PA--1, 7, 9, 29 |
| Hunsiker | EU--11 | Jager | LE--2 | | WA--5, 18, 32, |
| Hunt | LW1--24 | Jais | LW2--25 | | 46, 47, 60 |
| | LW3--7 | James | LW6--21 | | WI--1, 9 |
| | LW5--16 | | EU--21 | Joseph | PA--40 |
| | LW6--18 | | LE--13 | Jourdon | PA--21, 22 |
| Hunter | LW1--5, 38, 40 | | PA--24 | Journey | PA--28 |
| | LW3--10, 24, 29, | Jamison | LW1--21 | Jours (or Joy or Jury) | EU--17 |
| | 33, 37, 39 | | LW5--9, 15 | | LW5--9 |
| | LW5--7 | | PA--4 | Joy | EU--8, 17, |
| | PA--45 | Janes | LW2--27 | | 19, 23 |
| | WA--24, 47 | Jarrett | PA--5 | | PA--1 |
| Hurd | GR--13 | Jeans | LW1--8 | Juchemich | EU--20 |
| Hurder | GR--3 | Jefferson | LW4--5 | | WA--4, 5 |
| Hurlbut | WI--1 | | PA--49 | Judson | LW1--5 |
| Huson | LW1--11 | Jefferys | LW1--7 | | WA--46, 47 |
| Hutchings | LW4--21 | | WA--61 | Junberg | LW1--33 |
| Hutchinson | LW3--5, 34 | Jeffrey | EU--26 | Junebaugh | WA--58 |
| | CL--11 | Jeffries | PA--40 | Junkins | PA--45 |
| | MA--14 | Jenke | EU--8 | | WA--15, 32 |
| | PA--35 | Jenkins | LW1--38 | Jury (or Jours or Joy) | EU--17 |
| Hutchison | LW3--5 | | LW2--3, 32 | | LW2--15 |
| | LW4--4 | Jennings | LW4--6, 22 | Justiss | WA--57 |
| Huwlett | WA--12 | | MA--21 | | |
| Huzett | CL--5 | | LW1--26 | Kaegi | EU--43 |
| Hyde | LW3--26, 34 | | LW4--6 | Kaiz | LW1--29 |
| Hydel | LW2--3 | | EU--24 | Kane | LW1--20 |
| Hyland | LW2--33 | | GR--7 | | EU--16 |
| | WI--12 | | PA--9 | Kansas | LW1--17 |
| | | | WA--4 | Karnes | PA--1 |
| Ice | KA--9 | Jet | WA--13 | Kassinger | PA--8 |
| Ijams | LE--5 | Jim | KA--5 | Katherman | WI--7 |
| Ilesby | KA--17 | Johanning | WI--5 | Katsenstein | LW4--11 |
| Iliff | LE--7, 8, | Johns | LW4--8, 20 | Katzenstein | LW2--2 |
| | 10, 20 | Johnson | LW1--2, 3, 10, | Katzman | LW1--40 |
| | PA--1, 9 | | 11, 16, 17, | Kaufman | LW5--15 |
| Ingalls | LW1--14 | | 18, 19, 25, | Kaumer | LW3--20 |
| | LW2--14 | | 31, 33, 34 | Kaylor | WI--10 |
| | LW6--14 | | LW2--3, 19, 34 | Kearns | PA--29 |
| Ingersoll | KA--10 | | LW3--5, 10, 20, | Keaton | WI--14 |
| Ingle | WI--3, 13 | | 21, 23, 27 | Keaumer | LW3--20 |
| Ingstram | LW2--21 | | LW4--2, 5, | Kedward | WA--50 |
| Inks | LW6--16 | | 21, 23 | Keefe | LW3--6 |
| Innes | LW1--27, 30 | | LW5--2, 6, 8, | Keefe | WA--35 |
| | LW2--7 | | 11, 13 | Keeler | LW1--33 |
| Irvin | LW2--7 | | LW6--7, 11, | | LW2--1 |
| | LW4--11 | | 13, 14 | | LW3--35 |
| | LW6--1, 2 | | CL--11, 13, 16 | Keeny | CL--17 |
| Irwin | MA--2 | | EU--34 | | WI--8 |
| | WA--36 | | LE--2, 11, 13 | Keenz | CL--17 |
| | | | MA--11, 12 | Keiffer | PA--44 |
| Jack | MA--6 | | PA--44 | Keinson | LW1--36 |
| | WA--26 | | WA--17, 29, 37, | Keith | LW5--13 |
| Jackson | LW1--17 | | 43, 46, 50, | Kelchingman | CL--8 |
| | LW2--34 | | 51, 52 | Kellar | LW4--18 |
| | LW3--32 | Johnston | LW1--18, 41 | Keller | KA--1 |
| | LW4--9 | Johnstone | PA--6 | Kellerman | EU--35, 42 |
| | LW5--1 | Jones | LW1--5, 11, 12, | Kelley | KA--17 |
| | LW6--2, 7, | | 42, 43 | Kellogg | LW1--14 |
| | 14, 20 | | LW2--6, 15, 20, | | LW3--42 |
| | EU--7, 24 | | 27, 32, 35 | Kelly | LW2--17, 18 |
| | GR--4 | | LW3--9, 16, 17, | | LW4--14 |
| | MA--10 | | 33, 37, | | MA--12, 15, 16 |
| | WA--32, 55, 56 | | 38, 42 | | PA--14 |
| | WI--8 | | LW4--2, 8, | | WI--11 |
| Jacobs | LW1--39 | | 13, 16 | Kelsey | PA--1 |
| | CL--7 | | LW5--7 | Kelso | WA--15 |
| | WA--38, 40 | | LW6--10 | Keltner | PA--7 |
| Jacobson | LW5--10 | | CL--18 | Kendall | LW2--19 |
| Jacot | WI--5 | | GR--6, 7 | | |
| Jaedicke | LW1--28 | | KA--6, 11 | | |

| | | | | | |
|-------------|-----------------|------------|-----------------|------------------|-----------------|
| Kendall | EU--28 | Koons | LW2--14 | Lawson | LW3--1 |
| Kennedy | LW1--5, 21 | Koys | LW1--8 | | MA--20 |
| | LW2--24 | Kramer | PA--42, 43 | | PA--21 |
| | LW3--14, 15, 23 | Kraus | EU--6, 14 | Lawyer | WA--60 |
| | LW6--18 | Kretsinger | PA--34 | Layers | MA--19 |
| | KA--15 | Kristenger | LW2--23 | Layton | LW4--16 |
| | PA--23, 36 | Kritsinger | WI--13 | Leach | WI--3 |
| | WA--5, 6, 25, | Kubitschex | EU--35 | Leamer | EU--12 |
| | 53, 54, 57 | Kuhne | LW3--1 | Leary | LE--21 |
| Kenzie | KA--14 | | | Lebengier | WA--15 |
| | MA--15 | Labarriere | PA--12 | Lee | PA--22 |
| Kern | LW2--30 | Lacey | LW1--8 | | LW1--15 |
| | EU--39 | | LE--22 | | LW3--21, 35, 40 |
| Kerns | PA--22, 28, 29 | Lacy | KA--12 | | LW5--8 |
| Kersey | EU--4, 29 | Ladd | WA--21 | | EU--33 |
| Kesler | WI--11 | Laffreane | GR--7 | | GR--7 |
| Kester | MA--5 | Lafthouse | GR--12 | | LE--10 |
| Kesting | LW1--6 | Lagerquist | LW2--1 | | WA--22 |
| Kettles | LW2--27 | Lahay | LW3--11 | Leeka (or Lorha) | CL--4 |
| Keys | LW1--8 | Lahue | LE--9 | Leenox | LW3--21 |
| Kibbe | LW5--5 | Lahy | PA--11 | LeFebre | LW2--31 |
| Kidward | LW1--26 | | LW3--11 | Leiby | LW1--28 |
| Kiefe | LW4--17 | Laidlaw | PA--46 | Leigh | WA--45 |
| Kiefer | LW2--26 | Lain | LW1--8 | | WI--12 |
| Killam | LW4--9 | Laird | KA--7 | Leis | LW1--31, 41 |
| Killworth | LW2--11, 21, 22 | Lamb | WA--30 | | LW2--34 |
| Kimball | LW1--18, 37 | Lambers | CL--7 | Leiser | PA--47 |
| Kimbell | LW2--2 | Lamberton | LW6--9 | Lemming | WA--5 |
| Kincade | PA--11 | Lambertson | LW3--30 | Lendell | LW3--23 |
| King | WA--49 | Lamborn | WA--49 | Lenell | LW3--21 |
| | LW2--30 | Lammer | WA--6 | Lenix | LW3--21 |
| | LW3--7 | Lamon | LW1--21 | Lentweller | EU--39 |
| | LW4--14 | | LW1--15 | Leonard | EU--39 |
| | LW5--3 | | LW2--27 | | LW1--19 |
| | LW6--12 | | WA--57 | | LW2--18 |
| | CL--3 | Lampson | EU--18 | | WA--7 |
| | EU--2, 41 | Landon | PA--6 | Leoscch | LW1--11 |
| | PA--16 | Lane | PA--6 | Lescher | LW2--6 |
| | WA--3, 25 | | LW1--27 | | LW3--40, 43 |
| Kinzer | LW2--21 | | LW3--5 | Leslie | LW4--14 |
| Kinzler | LW2--8 | | LW5--8 | | PA--20 |
| Kirby | LW5--3 | | EU--11 | Letcher | LW6--1, 13 |
| | LW6--20 | | GR--9 | Levantine | LW3--6 |
| Kirchner | WA--24 | LaNell | PA--13 | Levi | LW2--17 |
| Kirk | LE--6, 14 | Langhston | LW3--21 | Lewis | LW1--31 |
| Kirkland | EU--11 | Langren | WA--7 | | LW2--24 |
| Kirkpatrick | LW2--24 | Laptad | EU--16 | | LW3--1, 12 |
| | MA--6 | | LW5--8 | | LW4--2, 5, 25 |
| Kiscree | WA--32 | Larson | GR--3 | | LW6--1, 8, 19 |
| Kiser | KA--13 | | LW1--24, 25, 26 | | EU--19, 44 |
| Kiseree | WA--32 | | LW3--43 | | GR--9 |
| Kitchen | WA--45, 52 | Larue | WA--45, 52 | | KA--8, 14, |
| Kizer | PA--19 | Lary | PA--51 | | 15, 16 |
| Klaus | KA--21 | Laster | WA--7 | | PA--25, 29 |
| Klein | LE--13 | Lathan | LW3--36 | | WA--8, 56, 59 |
| Kling | PA--34 | Lauber | PA--33 | Lexander | LW1--17 |
| Kneale | WI--7 | Laughlin | LW5--15 | Liggett | EU--19 |
| Kneappel | WA--35 | Laura | LE--4 | | PA--26, 33, |
| Knight | PA--24 | Lauson | LW3--11 | | 49, 50 |
| | LW5--7 | Lauten | WA--60 | Lightfoot | WA--7 |
| | MA--23 | Lava | PA--46 | Lightwiller | WA--7 |
| Knipp | WA--6 | Lavin | PA--59 | Likens | LW2--29 |
| Knipper | LW4--4 | Lavo | GR--3 | Limo | LW3--13 |
| Knittle | LW3--22 | Law | EU--40 | Linberry | LW3--16 |
| Knizer | LW2--21 | Lawler | LW5--8 | Lind | LW1--22 |
| Knoettell | LW2--19 | Lawrence | LE--19 | Lindburgh | MA--9 |
| Knowles | GR--9 | | LW2--30 | Lindell | LW1--22 |
| Knox | PA--46 | | GR--8 | Lindell | LW3--23, 34 |
| Knudsen | WA--4 | | KA--2, 3, 4 | Lindemood | EU--30 |
| Knudson | LW4-- | | WA--34, 37 | Linden | WA--45 |
| Koch | LW2--15 | | CL--8, 18 | Lindley | LW5--5, 7 |
| Kohler | LW1--12 | Laws | KA--15 | | LW6--14 |
| | EU--37 | | WI--5 | | EU--29 |
| | KA--4 | Lawson | LW2--35 | | WA--29 |
| Koogle | MA--10 | | | | |

| | | | | | |
|------------------|-------------|------------|-------------|------------|-------------|
| Lindsay | LW4--16 | Lyman | LW3--4, 5 | McDonald | LW2--12 |
| Lindsey | LW2--11 | | WA--47 | | LW5--3 |
| Linn | LE--10 | Lymon | LW3--4 | | EU--7 |
| Linter | LW2--35 | Lynch | LW1--24 | | WA--61 |
| Lions | CL--12 | | LW2--10 | | WI--5 |
| Lippe | LE--24 | | GR--11 | McDonnal | KA--11 |
| Lipscomb | WA--61 | Lynn | LW2--29 | McDougall | LW5--1 |
| Litchfield | LW1--2 | Lyon | LW1--31 | McDowell | LW1--27 |
| | EU--20 | | EU--18 | McEdoy | LW3--42 |
| | WI--1 | | LE--12 | McElroy | PA--19 |
| Little | LW3--34, 35 | Lyons | LW3--2, 8 | McEvoy | LW3--42 |
| Livermore | LW4--25 | | LW5--5 | McFarland | LW1--21, 2 |
| Livingston | EU--19 | | CL--12 | | EU--10 |
| | WA--41 | | | | PA--36 |
| Livingstone | LW4--6 | McAllaster | LW2--6 | | WA--28 |
| Loach | LW1--21 | | LW4--14 | McGee | CL--7 |
| Lobdell | EU--2 | McAllister | WA--59 | | WA--24, 25 |
| Lockhart | WA--24 | McBride | MA--12 | McGim | LW4--22 |
| Lockhead | KA--9 | McBryant | LW6--7 | McGinley | PA--43, 50 |
| Lockwood | LW5--15 | McButcher | KA--20 | McGinnis | LW6--10 |
| Loesch | EU--8 | McCabrey | GR--13 | McGowen | PA--41 |
| Loftien | LW1--18 | McCager | LW6--4 | McGrade | LW6--14 |
| Loftieus | LW1--18 | McCain | LW1--26 | McGrady | LW2--8 |
| Logan | LW1--2 | | LW2--1 | McGrath | LW2--17 |
| | LW2--12 | | CL--13 | McGruder | LW3--19 |
| | LW6--9 | McCall | LW1--8 | McIntre | LW3--2 |
| | WA--53 | | LE--10 | McIntyre | WI--10 |
| Logul | LW1--10 | McCandles | PA--11 | McKay | PA--25 |
| Lohor | KA--8 | McCandless | WA--18 | McKee | LW1--32 |
| Loit | GR--10 | McCaney | LE--23 | | LW5--4 |
| Lonebrake | LE--5 | McCann | LW1--38 | McKenna | LW5--16 |
| Long | LW1--38 | McCarroll | LW2--23 | McKennon | LW2--1 |
| | PA--51 | McCarthy | LE--9 | McKenzie | MA--7, 9, |
| | WI--8, 10 | McCarty | EU--8 | | 11, 15 |
| Longer | LW4--19 | McCauley | WA--10 | McKey | KA--18 |
| Longfellow | LW1--15 | McClanahan | LE--17, 18 | McKim | LW2--16 |
| | LW3--37 | McClellan | WA--61 | McKinney | KA--8, 18 |
| | WA--21 | McClemmand | LW1--39 | | LE--21 |
| Longinecker | CL--15, 16 | McClintock | EU--26 | | PA--16 |
| Loomis | LW3--31 | | WA--32 | McKnight | EU--25 |
| Looney | LW1--8 | McClure | LW2--15 | McLain | CL--13 |
| Lorha (or Leeka) | CL--4 | | LW4--16 | McLvain | KA--19 |
| Losch | EU--10 | McCoach | CL--9 | McMillan | LW3--5, 10 |
| Losey | MA--11, 12 | McComber | LW2--5 | | LW4--20 |
| Loss | LW4--12 | McCombs | LW1--8 | | WA--49 |
| Lossin | WA--33 | McConnel | CL--9 | McMillen | MA--24 |
| Lotholz | EU--44 | | GR--6 | McMillian | LW1--41 |
| Lothrop | PA--11 | McConnell | LW1--15 | | PA--17 |
| Loudinback | MA--6 | | LW2--23, 26 | McNair | LW5--14 |
| Louis | LE--9 | | LW3--15, 16 | McNare | LW6--19 |
| Love | LW1--16, 39 | | LW5--9 | McOmbs | LW1--8 |
| Lovejoy | PA--13 | McCord | PA--32 | McPherson | LW6--6 |
| Lovelace | EU--22 | McCoy | LW2--28 | | EU--29 |
| Lovell | LW5--5 | | LW4--20 | McPheters | EU--17 |
| Lovett | PA--17 | | LW6--5 | McQueen | PA--14 |
| Lovewell | LW5--5 | | WA--49 | McQuestion | LW2--17 |
| Lowe | LW3--34 | McCrackin | WA--40 | McQuisten | LW2--17 |
| | LE--4 | McCuin | LW1--26 | McTarret | KA--20 |
| Lowry | PA--28 | McCullough | LW1--6, 21 | McVay | PA--14 |
| Loyd | LW2--6 | | LW3--19 | McWhorter | LW3--27 |
| Lucas | WA--2 | McCune | MA--8 | McWilliams | LW3--32 |
| Lucton | WA--5 | McCurdy | LW1--27 | | |
| Ludington | LW1--41, 42 | | LW2--5 | Maberly | EU--15 |
| | LW4--24, 25 | | LW3--30 | Macauley | LW3--37 |
| Lugton | LW4--24 | | LW4--15 | MacDonald | LW1--40 |
| Lum | LW1--18 | | LW6--3 | Mack | LW4--1 |
| | LW4--4 | | WA--55 | | LW5--12, 39 |
| Lupping | WA--14 | McCure | LW1--43 | Mackland | LW3--14 |
| Luther | LW2--22 | McDaniels | LW1--36, 39 | Macomber | LW2--5 |
| Lutz | EU--26 | | LW4--8 | | LW5--5 |
| | LE--22 | McDogall | LW5--1 | Macy | CL--2 |
| | WI--1 | McDonald | LW1--6 | Madden | LW1--8, 10 |

| | | | | | |
|------------|------------------|--------------|------------------|------------|---------------|
| Madden | LW6--20 | Mason | CL--4 | Miller | LW3--2, 5, 2 |
| | PA--33 | Mateney | LW2--3 | | 26, 36 |
| Maddox | LW3--33 | Mathena | WA--61 | | LW4--10, 11, |
| | LW4--19, 22 | Mathews | LW1--7 | | 14, 15 |
| Maffetty | LE--8 | | LW3--32, 33 | | LW5--8, 9, 1 |
| Maher | LW6--2 | | LW6--3, 18 | | LW6--6, 7, 1 |
| Maihel | MA--18 | | WA--55 | | GR--7, 12 |
| Main | LW1--4 | Matney | WI--3, 7 | | MA--5, 21 |
| | LW2--20 | Matson | WA--61 | | PA--27, 52 |
| | LW6--6 | Mattee | PA--22 | | WA--8, 9, |
| | WA--50 | Matter | WA--34 | | 10, 40 |
| Majors | LW3--34 | Mattison | LW5--16 | | WI--10 |
| Makimson | PA--38 | Maxfield | LW6--18 | Millner | LW6--4, 5 |
| Mallard | LW2--21 | May | LW3--12 | Mills | LW1--34 |
| Mallison | LW6--3 | | LW6--19 | | EU--29 |
| Malone | PA--12 | | EU--30 | Milner | LW4--18 |
| Mandel | LW1--17 | | GR--2 | Milton | WA--7 |
| Manhard | LW4--11 | Mayberry | LW1--19 | Mine | LW1--34 |
| Manix | MA--18 | | LW5--8 | Miner | LW1--31 |
| Mann | LW3--24 | Mayer | MA--7, 8 | Minner | PA--32 |
| | EU--16 | Mayers | LW1--17 | Minor | LW1--8 |
| Manning | LW3--39 | Mayes | LW6--2 | | LW3--4 |
| | EU--31 | Mead | LW1--13 | Mitchel | LW6--5, 15 |
| Manor | WA--9 | | LW2--20 | Mitchell | LW1--16, 39 |
| Mansfield | WA--39 | | LW4--10 | | LW2--8 |
| Manson | WA--51, 52 | Meador | PA--25, 29 | | LW6--15 |
| Manter | LW1--19 | Meairs | WA--1 | | KA--19 |
| | LW4--7 | Means | WA--37 | | MA--3 |
| | WA--42 | Meeder | PA--31 | | PA--47 |
| Manwarring | WA--10, 11 | Meek | MA--8 | | WI--4, 10 |
| Maphet | PA--51 | Melber | LW3--37 | Moak | LW4--19 |
| March | W3--43 | Meloin | LW5--14, 15 | Mock | PA--32 |
| | EU--8 | Melven | WA--49 | Modine | LW1--41 |
| Mardel | PA--31 | Melver | WA--49 | | LW2--10 |
| Marfilius | EU--40 | Melville | LW1--11 | Mohler | MA--13 |
| Mark | LE--12 | | LW3--37 | Molher | MA--13 |
| Markle | CL--13 | | LW4--20 | Moman | WA--1 |
| Markley | WI--1 | Melvin | LW5--14, 15 | Monk | WA--49 |
| Marks | LW2--25, 26 | Mendenhall | LW6--17 | Monroe | LW3--27 |
| | LW3--40 | | EU--42 | | CL--4 |
| | PA--34 | Menet | W3--26 | | EU--3, 42, 43 |
| | WA--43 | Menger | LW3--21, 39 | | GR--12 |
| Marley | PA--17 | Menning | KA--14 | Montgomery | LW1--40 |
| Marple | WA--27 | Mensam | LW3--22 | | LW2--8 |
| Marsh | LW1--32 | Mercer | GR--10 | | LW4--16, 17 |
| | LW4--11 | Meridey | GR--6 | | KA--17 |
| | WA--53 | Merrill | LW5--15 | | MA--15 |
| Marshall | LW2--10, 32 | Merritt | LW3--21 | | PA--44 |
| | GR--1 | Mertz | EU--37 | Moon | EU--8 |
| | LE--19 | Messenhaimer | MA--1, 2 | Moore | LW1--1, 20, 2 |
| | PA--27 | Messer | LW3--31 | | 25, 39, |
| | WA--16 | | WA--59 | | LW2--29, 31, |
| | WI--1 | Messinger | KA--18 | | LW3--14, 25 |
| Martin | LW1--12, 26, 27, | Metcalf | LW4--2 | | LW5--5 |
| | 32, 38 | Metsker | MA--2, 3, 4, 18 | | LW6--18 |
| | LW2--5 | Metzler | LW1--20 | | CL--8 |
| | LW3--8, 12, | Meye | EU--6 | | EU--25 |
| | 13, 40 | Meyer | EU--6, 23 | | LE--8, 19 |
| | LW4--7, 12, 15 | | PA--11 | | PA--12, 26 |
| | LW6--4 | Micheal | KA--6 | | WA--38, 58 |
| | KA--11, 17 | | MA--23 | | WI--14 |
| | LE--3, 12 | Mickell | KA--19 | Moran | LW3--26 |
| | MA--19, 22 | Mickey | LW2--14 | Morey | WA--55 |
| | PA--20, 47 | Miegler | LW4--23, 24 | Morgan | LW2--8 |
| | WA--13, 27, | Mifflin | MA--6 | | LW3--17, 18 |
| | 43, 47 | Migliario | LE--2 | | LW6--5, 17 |
| Marven | LW1--28 | Mignet | PA--37, 38 | | EU--44 |
| Marvin | LW2--23, 24 | Miles | LW3--8 | | GR--6 |
| Mason | LW2--9 | Millard | LW4--9 | Morison | EU--15 |
| | LW5--3, 6, | Miller | LW1--19, 31 | Morlan | LE--10 |
| | 12, 14 | | LW2--10, 11, 13, | Morris | LW1--16 |
| | LW6--9 | | 20, 33 | | LW6--6, 8 |

| | | | | | |
|------------|---------------|--------------|----------------|-----------|---------------|
| Morris | LE--10 | Naddlehoffer | LW3--35 | Ogden | LW3--35 |
| Morrison | WA--2, 29, 30 | Nadlehoffer | LW3--35 | O'Herron | LW3--19, 20 |
| Morrow | LW1--42 | Nailer | LW3--12 | O'Leary | LW1--43 |
| | LW2--34 | | LW6--8 | Olin | PA--9 |
| Morse | WA--54 | Natson | KA--2 | Oliver | LW1--36 |
| | LW2--6 | Neal | LW2--16, 24 | | LW2--14, 29 |
| | LW3--44 | | LW3--19 | | LW5--11 |
| Mortinson | LW3--23 | | LW4--17 | | LE--3, 6 |
| Morton | LW3--44 | | WA--28 | | MA--17 |
| | LW6--13 | Negley | LW1--11 | Olleny | CL--2 |
| | PA--9 | Neiff | LW5--15 | Olman | KA--14 |
| | WA--23 | Neill | KA--15 | Olson | LW1--3 |
| Moseby | LW3--10 | Neis | EU--4 | | LW3--24 |
| Mosely | LW5--6 | Nelligan | LE--17 | | CL--10 |
| Mosenbrink | LW4--19 | Nelo | LW5--1 | O'Neal | LW2--19 |
| Mosher | LW3--26, 35 | Neloe | LW5--1 | | PA--41 |
| | PA--28 | Nelos | LW5--1 | O'Neil | LW2--14 |
| Mosley | LW2--22 | Nelson | LW1--8, 16, 28 | Ordh | PA--31 |
| | PA--15, 18, | | LW2--2 | Oren | MA--21 |
| | 46, 48 | | LW4--6, 20 | Orender | EU--3 |
| Moss | LW1--34 | | GR--1 | Orm | LW6--3 |
| | CL--7, 8 | | PA--2 | Osborn | LW2--34 |
| | MA--7 | Nenns | LE--4 | | LW3--26 |
| Mott | LW2--19 | Nesbit | GR--13 | | LW5--5 |
| | CL--1, 5 | Nesburgh | LW6--1 | Osborne | LW1--16 |
| | LE--23 | Neuman | LW1--20, 21 | | PA--38 |
| | MA--12 | Neustifter | EU--38 | Oswalt | WA--22 |
| | WA--30 | Nevison | LW2--15 | Oswatt | WI--12 |
| Mottram | LW1--22 | Newcomb | LW3--8 | Otland | EU--28 |
| Moys | LW1--23, 24 | Newitts | LW1--2 | O'Toole | LW3--36 |
| Mugan | WA--42 | Newlin | WA--30 | Ott | EU--12 |
| Mugler | WA--54 | Newman | LW2--21 | Ottman | LW2--7 |
| Muir | LW4--1 | | LW3--8, 12, 39 | Ottoway | MA--17 |
| Mull | LW4--17 | | LW4--21 | Ouslin | CL--13 |
| Mulso | PA--26 | | WA--26 | Overton | WA--59 |
| Mulvain | LW6--19 | Newmark | LW2--17, 20 | Owen | WA--21 |
| Mumford | LW1--20 | Nicholas | WA--37 | Owens | MA--1 |
| | GR--11 | Nichols | LW1--11, 40 | | |
| Munay | LW1--13 | | EU--18 | Packard | LW1--41 |
| Mundt | LW4--13, 14 | Nicholson | LW4--1 | | LW5--15 |
| Munger | LW2--5 | | LW6--8 | Paddock | KA--6 |
| | LW4--14 | Ninns | LE--4 | Painter | LW6--17 |
| | LE--6 | Noacker | LW5--1, 2 | Paits | LW1--20 |
| | PA--23, 47 | Noaker | LW5--1, 2 | Palen | EU--8 |
| Munk | LW1--26 | Noe | LE--6 | Palm | LW2--27 |
| Murch | LW2--9 | Nojes | WA--42 | | WA--44, 51 |
| Murdock | LW1--35 | Nolan | LW1--19 | Palmer | LW1--10 |
| | LW4--16 | | LW3--43 | | LW2--14 |
| Murphy | LW1--35 | Northent | GR--12 | | EU--2 |
| | LW2--15, 16 | Northrup | CL--3 | Pardee | PA--2 |
| | LW3--29 | Northway | LW1--27, 29 | | WA--15 |
| | LW4--7 | Norton | LW1--17, 22 | | WI--4 |
| | KA--5 | | EU--126 | Parish | LW1--40 |
| Murray | LW1--13 | | WA--47, 55 | Parker | LW4--16 |
| | LW5--11 | Nottingham | LW5--2 | | EU--12 |
| | PA--47 | Noyes | WA--42 | | GR--6 |
| Muse | LW2--28 | Nuffer | KA--4, 10 | | WA--4, 36 |
| Mussey | LW6--12 | Nye | LW4--3 | Parks | LW2--25 |
| Mustard | LW2--11 | | | | LW4--2, 5, 11 |
| | WA--52 | Oaks | PA--2, 3 | | PA--15 |
| Myer | LW1--6 | O'brien | EU--42 | Parry | LW1--29 |
| Myers | LW1--39 | O Bryon | WA--33 | Parsons | LW5--8 |
| | LW3--17 | O'Conner | LW1--10 | | PA--30 |
| | LW4--4 | | LW3--11, 12 | Paschall | PA--22 |
| | LW6--5 | O Conor | WA--45 | Patrick | WA--55 |
| | CL--17, 18 | Odell | PA--10 | Patterson | LW1--40 |
| | GR--3, 12 | | WA--16 | | LW3--27 |
| | MA--4, 8, 16 | Oehrle | MA--8 | | LW4--9 |
| Myrick | CL--16 | Oehrly | LW4--4 | | LW6--21 |
| Myton | LW1--20 | Oesch | LW2--3 | | PA--18, 27 |
| | | Offner | WA--9 | | WA--32 |
| Nace | LE--12 | Ogden | LW1--19 | Patty | LW3--20 |

| | | | | | |
|------------|-------------------|--------------------|-------------|--------------|-----------------|
| Paul | LW1--2 | Phillips | LW2--17 | Prentiss | WA--42 |
| Payne | LW2--3 | | EU--3, 31 | Prescott | LW2--9 |
| | CL--1 | | PA--47, 48 | Preston | KA--11 |
| | WI--5 | | WI--13 | Price | LW2--11, 33, 34 |
| Peabody | LW2--28 | Phillipps | LW1--1, 2 | | MA--8 |
| | WA--44 | Phorese | LW2--24 | | PA--47, 49 |
| Peak | WA--4 | Piatt | CL--15 | Priestly | WI--10, 12 |
| Peake | WA--4 | Pickard | WI--13 | | PA--25, 26 |
| Pearce | LW3--35, 36, 37 | Pickens | LW3--9 | Prince | LW6--5 |
| Pearson | LW2--22 | Pieratt | WA--16 | Prior | WA--2 |
| | LW3--12, 35 | Pierce | LW1--16 | Prisach | LW2--1 |
| | LW4--7 | | CL--5 | Pritchett | WA--27, 33 |
| | EU--10, 21, 30 | | WI--3 | Proper | LW3--38 |
| | PA--5, 6, 22, | Pierson | KA--13 | Propper | LW2--30 |
| | 23, 51 | | WA--13 | Prosser | WA--1 |
| | WA--8, 28, | Pifer | KA--2 | Pruett | WA--27, 28 |
| | 42, 52 | Pigott | WA--56 | Pryor | LW1--40 |
| Pease | LW2--20 | Pike | LW1--12 | | WA--16 |
| | WA--33 | Pikens (or Pikins) | LE--6, 7 | Puckett | PA--17 |
| Peck | LW1--28 | Pilla | EU--43 | | WA--25, 28 |
| | WA--41 | Pinchard | LW5--1 | Puger | LW2--32 |
| Peebles | EU--31 | Pine | GR--7 | Pugh | WA--18, 29 |
| Peer | PA--13 | Pinger | EU--26 | Pulvermuller | LW3--25 |
| Peffly | WI--5 | Pingree | MA--16 | Purcel | LW6--6 |
| Peirce | LW1--16 | Pinson | GR--5, 6 | Purington | WA--28 |
| | WA--60 | Piper | LW3--24 | Putman | LW5--4 |
| Peirson | LW1--42 | | PA--50 | Putney | LW4--3 |
| | LW4--15 | Pitchard | LW1--33 | Pyle | LW2--9 |
| Pekham | LE--14, 15 | | LW3--17 | | |
| Pells | WA--34 | Pitcher | LW4--24 | Quiggle | LW4--7 |
| Pendleton | LW1--20 | Pitts | EU--28 | Quigley | CL--16 |
| | LW4--17 | Place | LW4--16 | Quinley | LW6--7 |
| Penery | WA--61 | Plants | LW3--8 | Quinn | LW2--22 |
| Penney | LW4--9 | | KA--16 | | |
| Pennington | EU--7 | Plasket | PA--25 | Raber | CL--5, 6 |
| | LE--18 | Platt | LW3--25 | Rafe | WA--20 |
| Peper | LW4--10 | Platts | LW3--26 | Rahskoph | LW2--32 |
| Peppard | WI--13 | Platz | CL--16 | Raimond | LW3--27 |
| Perce | LW3--35, 36, 37 | Pleasant | KA--10 | | LW4--14 |
| Perdell | WA--61 | Plochel | EU--37 | Rake | KA--4 |
| Perkins | EU--5 | Plum | LW2--14 | Ralston | WA--32 |
| Perot | PA--36 | Plumer | LE--4 | Ramah | PA--51 |
| Perry | LW1--27, 35 | Plummer | LE--4, 19 | Ramphendall | LW2--29 |
| | LW4--10 | Poehler | LW1--12, 35 | Ramsdell | LW5--10 |
| | LW6--5, 16 | Poke | LW3--29 | Ramsey | LW1--35 |
| | EU--38 | Polson | LW1--32 | | LW3--22 |
| | GR--13 | | LW3--12 | | WI--12 |
| Persing | EU--19 | Pope | LW3--28 | Rand | LW2--21 |
| Pete | LE--5 | Porter | LW1--41 | Randall | LW6--17 |
| Petefish | CL--13, 14 | | LW2--11 | | PA--15, 19 |
| Peterson | LW3--39, 42, 44 | | KA--18 | | WA--9 |
| | LW4--4, 8, 12, 17 | | WA--46, 52 | Randell | WA--6 |
| | LW5--3 | Postma | MA--5 | Randolph | WA--10 |
| | KA--11 | | WI--6 | Rankin | LW1--7, 30 |
| | PA--8 | Potter | LW1--17 | | WA--54 |
| | WA--45, 46 | | LW4--12 | Rannady | WA--13 |
| Petit | PA--42 | | WA--14 | Ranphendall | LW2--29 |
| | WA--17 | Potts | GR--1 | Ransen | KA--20 |
| Petrie | LW3--42 | Potwin | LW2--27 | Ransom | LW4--24 |
| | LW5--8, 10 | Powell | LW6--10, 19 | | GR--14 |
| Pettengill | PA--22 | | PA--19 | Rappard | WI--1 |
| Pettibone | LW4--21 | | WI--13, 14 | Rarick | MA--22 |
| | LW5--14 | Powers | WA--55 | Rate | EU--14 |
| Pettiford | LW2--4 | Powey | LW5--13 | Rauch | LE--6 |
| Petty | LW5--3 | Prang | EU--36 | Raumm | EU--40 |
| Petz | LW3--31 | Prater | LE--20 | Rausen | KA--20 |
| Pfeiffer | EU--37 | Prather | LW1--1 | Ray | LW2--16 |
| Phelps | LW1--15 | Pray | MA--16 | | CL--9 |
| Phelps | LW1--15 | Prentice | LW3--11 | | EU--2, 5 |
| Phenicie | EU--3 | Prentiss | LW1--41, 53 | | MA--1, 2 |
| Philbrick | LW5--7 | | LW2--11 | Raymond | LW3--26, 27 |
| Phillip | KA--8 | | LW3--10, 11 | Rayson | EU--21 |

| | | | | | |
|-------------|------------------|--------------|----------------|-----------|-----------------|
| Read | LW1--34 | Ridley | WA--10 | Rothrock | WI--2, 6, 10 |
| | LW4--11 | Riggs | LW1--42 | Rothwell | LW4--21 |
| | LW5--10 | | LW3--10, 44 | Rottman | LW1--18 |
| Redding | EU--30 | | CL--14 | | LW3--16 |
| Redington | LW1--32 | | PA--2 | Rottstein | LW4--19 |
| Redmond | EU--8 | | WA--53, 57 | Rouse | PA--47, 50 |
| Redward | WA--50 | Riley | LW4--23 | Rouselot | PA--42 |
| Ree | LW2--14 | | LW5--1, 11 | Rousey | PA--42 |
| Reece | WA--14, 17, 35 | Riling | MA--14 | Rowley | LW2--13 |
| Reed | LW1--19 | | WI--14 | | LW6--12 |
| | LW3--5 | Riner | LW1--14, 15 | Roy | MA--17 |
| | LW5--10 | Ring | WA--25 | Royer | WI--7 |
| | PA--29, 50 | Rinley | PA--19 | Rud | LW5--10 |
| | WA--15 | Rishar | CL--19 | Rudd | LW1--20 |
| Reeder | WI--5 | Ritchard | LW1--33 | Rudinger | LW1--35, 36 |
| Reefer | WA--35 | Ritches | LW6--5 | Rudy | LW4--5 |
| Reeher | MA--7 | Ritzman | LW5--8 | Rufert | GR--12 |
| Reel | EU--40, 43 | River | LW1--15 | Ruhart | LW6--6 |
| Reems | LW3--21 | Rivers | LW4--14 | Rulan | LW5--10 |
| Reese | LW1--26 | Roberts | LW1--5, 6, 22, | Ruse | LW1--26 |
| | LW5--4 | | 40, 41 | Rush | GR--8 |
| Reeves | LW4--16, 23 | | LW2--1, 4, 22 | Rushmar | LW1--33 |
| Rehm | EU--4 | | LW3--16, 43 | Russell | LW2--7, 28 |
| Reid | LW1--9 | | LE--1, 25 | | LW3--10 |
| Reiner | LE--13 | | PA--2, 19 | | GR--3 |
| Reinert | PA--27 | Robertson | LW2--25 | | WA--51, 56 |
| Reinheimer | LW5--11 | Robinnet | WI--10 | Ruthfield | LW1--1 |
| Reinshild | LW3--40 | Robinett | LW1--42 | Rutter | EU--3 |
| Relso | WA--15 | Robinson | LW1--13, 15 | Rutz | LW4--1, 2 |
| Remick | KA--12 | | LW2--12, 23 | Ryder | PA--34 |
| Renow | PA--36 | | LW3--27 | | |
| Reser | LW2--19 | | LW5--14 | Saganta | CL--14 |
| Reusch | EU--18 | | EU--7 | Saile | MA--18 |
| Revelo | PA--39 | | GR--13 | Salvader | KA--10 |
| Reynolds | LW2--16, 19, | | MA--20 | Samons | LW1--5 |
| | 29, 33 | | PA--35 | | WA--46 |
| | KA--13 | Roby | LW3--43 | Samples | LE--25 |
| | PA--29, 51 | | CL--9 | Sampson | LW3--25 |
| | WA--15, 38, | Rockstroh | WA--23 | Sander | LW6--11 |
| | 45, 54 | Rodell | PA--2 | Sanders | WI--1 |
| | WI--2 | Rodgers | LW6--10 | Sanderson | LW1--24 |
| Rheschild | LW3--40 | | PA--44 | Sandhover | LW3--23 |
| Rhinehart | LW4--4 | Rodman | PA--2 | Sands | LW1--34 |
| Rhineheimer | LW5--11 | Roe | PA--8, 14 | Sanford | LW2--12 |
| Rhoades | PA--40, 41, 42 | Rogan | LW2--22 | Saniter | MA--11 |
| Rice | LW1--37 | Rogers | WA--4, 6 | Sargent | LW2--19 |
| | LW3--38 | Rohe | LW4--25 | | LW3--36 |
| | CL--1 | | EU--4 | Sartoris | LW3--40 |
| | LE--6 | | PA--31 | Saule | LW5--13 |
| | PA--23 | Rokilan | LW3--12 | Saum | GR--11 |
| | WA--2, 6, 22, 61 | Roller | KA--9 | Saunders | LW1--1, 9 |
| Rich | LW3--32 | Roons | PA--38 | | LW2--19, 22 |
| | PA--16, 51 | Root | LW1--5 | | LW3--26, 27, 33 |
| Richards | LW1--38 | | WA--49, 50 | | LW4--7 |
| | LW3--8, 9, 17 | | WI--9 | | PA--29 |
| | LW5--2, 3, 8, 19 | Rose | LW3--18 | | WA--28 |
| | EU--39, 42 | | LE--12 | Savage | LW2--10, 13 |
| | KA--16 | | WA--37 | | WA--12, 30, 55 |
| | WA--14 | Rosebaugh | PA--38 | Savier | CL--4 |
| Richardson | LW1--18, 28 | Rosecrans | LW1--3 | Sawin | PA--11, 12 |
| | LW3--34 | Rosenau | EU--32 | Sawyer | CL--9, 18 |
| | CL--8 | Rosenburg | LW3--20 | | MA--19 |
| | EU--27 | Ross | LW1--33, 37 | | PA--45 |
| | KA--7 | | LW2--7, 34 | Saxton | WA--31 |
| Richey | KA--18 | | LW5--13 | Schaffer | EU--35 |
| Ricker | LW6--12 | | PA--32 | Schehrer | EU--22 |
| Rickman | EU--39 | | WA--61 | Schendell | PA--33 |
| Riddle | LW1--28 | Rossell | WA--57 | Scheorer | WA--48 |
| Ridell | LW2--26, 27 | Rossi | CL--6 | Scheurer | LW2--27 |
| Ridenour | WA--44 | Rostentrader | WA--37 | Schilling | LW2--12, 17 |
| Rideour | LW6--3 | Rote | LW3--35 | | EU--43 |
| Ridgway | LE--24 | Roth | KA--8 | Schimmons | LW1--27 |

| | | | | | |
|-------------|-------------|-----------|-----------------|----------|-------------------|
| Schirle | EU--6 | Shalms | LE--18 | Sinclair | LW2--5 |
| Schlegel | LW2--27 | Shanhan | LW2--17 | Sissley | KA--11 |
| | EU--13, 22 | Shank | WA--20 | Sitzler | WI--4 |
| Schlesinger | LW4--3 | Shankland | WA--57 | Sively | MA--10 |
| Schmeltz | MA--21 | Shanklin | LW2--35 | Skaggs | WA--5 |
| Schmidt | EU--19 | Shann | LW3--34 | | WI--3, 4 |
| Schmiller | EU--21 | Shannon | LW1--33 | Skeene | LW2--1 |
| Schmucker | LW3--6, 7 | | LW6--5 | Skiff | LW1--41 |
| Schnebly | PA--49 | Sharp | MA--20 | Skinner | LW1--21, 25 |
| Schneider | WA--59 | Shaw | LW1--37 | | LW4--13 |
| Schoenhofer | EU--6 | | LW5--12 | | WA--50 |
| Schofield | LW1--8 | | GR--4 | Skofstad | LW3--16 |
| Schoper | PA--30 | | KA--3 | Slater | LW4--23 |
| Schort | LW2--12 | | WA--27 | Sloan | PA--22, 40 |
| Schott | LW3--34 | Shearer | LW3--12, 40 | Slorms | LE--12 |
| | LW4--10 | | GR--4 | Slosson | LW2--5 |
| Schrieber | EU--35 | | WA--3 | Slough | MA--19 |
| Schroeder | EU--39 | Sheets | CL--3, 15 | Slusher | WA--61 |
| Schuerer | LW2--12 | Shepard | GR--7 | Smart | LW3--24 |
| Schugaro | LW3--30 | Shepherd | LW2--18, 22 | | LW4--11 |
| Schwabe | LW4--4 | | LW3--12 | Smith | LW1--1, 2, 3, 15, |
| Schwartz | WI--2 | | LW4--22 | | 30, 35, 39, |
| Schwartz | WI--2, 13 | | KA--13 | | 41, 42 |
| Scott | LW5--5 | | WA--14, 19 | | LW2--5, 6, 7, |
| | LW6--10, 13 | Sheppard | WI--5 | | 11, 21, 22, |
| | PA--44 | Shepperd | PA--27 | | 23, 25, 33, |
| | WA--38, 58 | Sherwood | LW1--39 | | LW3--3, 22, 35, |
| | WI--4 | | LW5--6 | | 37, 38, 42 |
| Scouten | KA--16 | Shields | EU--7, 8, 31 | | LW4--8, 9, |
| Scraggs | LW4--5 | | KA--19 | | 10, 23 |
| Scribner | KA--16 | | PA--40, 48 | | LW5--4, 5, 10 |
| Scriggs | LW1--29 | Shirar | WA--31 | | LW6--4, 9, 13, |
| Scrubbs | LW5--13 | Shirley | LE--20 | | 14, 15, 18 |
| Scruggs | LW5--13 | Shively | MA--9, 10 | | CL--4, 7 |
| Seamons | WA--30 | Shiver | KA--14 | | EU--4, 17, 21 |
| Searing | LW5--11 | Shodder | LW3--19 | | GR--11, 12 |
| | CL--7 | Sholes | LW1--35 | | LE--3, 4 |
| Searl | LW1--2 | Sholl | LW1--10 | | MA--3, 12, 22, |
| Sears | EU--22 | Shook | PA--23, 24 | | 23, 24 |
| | WA--1 | Shoop | LW5--15 | | PA--3, 5, 35, |
| Seaton | LW1--6 | Shores | PA--28 | | 36, 48 |
| | LW5--5 | Short | WA--52 | | WA--3, 5, 45, |
| | LW6--1 | Shothes | LW1--8 | | 49, 52, 61 |
| | GR--6 | Shotow | LW6--15 | Smoot | GR--3 |
| | KA--12 | Shott | MA--13 | Snead | LW2--27 |
| Seaver | LW5--15 | Shugaro | LW3--11, 32 | Snediger | WA--55 |
| Seavin | LW5--15 | Shugart | EU--14 | Sneed | LW2--27 |
| Sebley | WA--14 | Shuk | LE--21 | Snefkow | LW3--11 |
| Secrest | KA--3 | Shultz | LW1--12 | Snidder | LW1--38 |
| | LE--22 | | WA--35 | Snider | LW1--36 |
| Sectin | WA--28 | | MA--8 | | LW2--33 |
| Sedgwick | KA--16 | Shutt | WA--34, 35 | | LW3--16, 31, 40 |
| Seetin | WA--28 | Sibley | LW4--4 | | LW4--18 |
| Seewir | LW3--5 | Siefel | EU--15 | | CL--18 |
| Seitz | PA--34 | Siegmund | LE--8 | | PA--18, 45 |
| Seiwald | EU--7 | Sills | EU--36 | | WA--19 |
| Selaven | LW6--9 | Silsby | LW3--19 | Snillen | LW6--5 |
| Selby | MA--22 | Silvert | LW2--34 | Snoddy | LW4--22 |
| Selig | LW2--14 | Simmons | GR--8 | Snodger | LW3--22 |
| Sellars | LE--24 | | MA--17 | Snow | LW1--6 |
| Selle | LW3--23 | | PA--13 | Snowder | LW2--23 |
| Sells | PA--52 | | WA--40 | Snyder | LW3--31 |
| Selser | PA--33 | Simon | MA--6, 21 | | EU--14, 33 |
| Selvey | MA--6 | Simpson | LW1--40 | Soach | LW1--21 |
| Senger | LW1--37 | | LW2--3, 27 | Sommer | EU--17, 43 |
| Serber | MA--19 | | LW3--7, 19, 32, | Sowers | MA--14 |
| Sergent | LW2--18 | | 36, 37 | | WI--6 |
| Sering | LW5--5 | | CL--18 | Sowna | LW1--28 |
| Service | LW4--21, 22 | | WA--55, 56, | Soxman | MA--13 |
| Seybold | EU--40 | | 57, 58 | | WI--1 |
| Shack | WA--56 | Sims | LW4--19, 20, 23 | Spangler | LW5--4 |
| Shaffer | WI--2 | | WA--25 | | PA--39 |

| | | | | | |
|--------------|---------------|--------------|-----------------|-------------|----------------|
| Sparks | EU--7, 15 | Stewart | KA--15, 16 | Supple | LW1--6 |
| Sparr | LW4--21 | | PA--44 | | LW4--16 |
| | GR--7 | | WI--6 | Sutarieus | LW1--40 |
| Spaulding | LW1--40 | Stickney | PA--33 | Sutherland | LW3--12 |
| | LW2--20 | | WA--44 | Sutliff | LW1--21, 42 |
| Speers | WA--53 | Stiefel | LW4--13 | Sutter | WI--4 |
| Speery | WA--26 | Stifel | LW4--3 | Sutton | LW4--20 |
| Speitz | EU--42 | Still | EU--39 | | CL--4 |
| Spellman | MA--22 | | PA--52 | | WI--4 |
| Spence | LW1--31 | Stillwell | PA--20, 21 | Swan | LE--7 |
| | PA--18 | Stimson | LW2--19 | Swanson | WA--13 |
| Spencer | LW1--10 | Stine | GR--11 | Swarts | WI--2 |
| | LW3--2 | Stockflesch | KA--10 | Swedenbaugh | LE--17 |
| | LW4--19 | Stockwell | LW4--9 | Swederland | LW2--26 |
| | CL--8 | Stodard | EU--11 | Sweedland | LW4--20 |
| | LE--7, 14 | Stoebner | WI--5 | Sweeldand | LW4--4 |
| | PA--6, 15 | Stokes | CL--19 | Sweeney | LW5--11 |
| Speraw | PA--11 | Stoll | EU--33 | Sweetzer | WA--4 |
| Spicer | LW1--1, 10 | Stoltenburg | LE--10, 19 | Sweezy | WA--43, 44, 56 |
| Spidley | LW3--1 | Stone | LW1--14 | Sweezy | LW2--28 |
| Spitler | CL--2, 5, 17 | | LW3--15 | Sweezy | LW3--1 |
| | MA--3 | | LE--16 | Swift | LW3--38 |
| | WI--7 | | PA--4 | Syder | WI--2 |
| Spivey | LW1--10 | | WA--20 | Sykes | WA--31 |
| Sprague | KA--16 | Stonebreaker | PA--39 | | WI--5 |
| | PA--29 | Stones | WA--27 | Sylvester | LW3--44 |
| Spriggs | LW4--3 | Stopher | LW5--2 | Syman | LW2--4 |
| | LW6--16 | Storms | LE--12 | | |
| Spurgeon | PA--25 | Stough | MA--19 | Tabor | LW1--24 |
| Stadler | EU--4, 34, 35 | Stout | LW1--43 | | LW2--20 |
| Staggers | WA--27 | | LW2--28 | | KA--17, 20 |
| Stahl | LW3--43 | | PA--44 | | WA--23 |
| Staib | PA--35 | Stover | KA--15, 16 | Tailor | LW6--12 |
| Staines | LE--22 | | WA--3 | Talberth | LW1--14 |
| Stallcup | LW1--10 | Stowe | KA--8 | Talles | LW2--8 |
| Stanhouse | LW2--1 | Straffon | LW1--20 | Talley | MA--3 |
| Stanley | LW4--18 | Straker | KA--12 | Taphnel | PA--20 |
| | LW5--3 | Straker | LW5--7 | Tappe | LW1--12 |
| | EU--27, 30 | Street | LW2--16 | Targart | KA--15 |
| Stansbaugh | KA--14 | Streeter | PA--1 | Tarpy | PA--1 |
| Stanton | EU--29 | Stroberd | LW1--33 | | WA--34 |
| Staples | LW3--4 | Stroble | LW1--2 | Tasker | WA--53 |
| Star | PA--16 | Strode | LW1--43 | Taskett | LW5--7 |
| Starbuck | EU--29 | | LW2--4, 5 | Tate | PA--32 |
| Starffer | LW2--10 | | LW3--19 | Taylor | LW1--8, 37, 39 |
| Starkweather | LW1--36 | | LW4--5, 22, 23 | | LW2--15, 17 |
| Starrett | LW5--16 | Strong | LW2--31 | | LW3--42 |
| Stauff | LE--12 | | LW4--10 | | LW4--20, 21 |
| Steele | LW2--24 | Strouse | CL--12 | | LW5--12 |
| | CL--3, 8, 16 | Strunk | PA--39 | | LW6--9, 12, 18 |
| | PA--4 | Stuart | LW2--9 | | EU--8, 19 |
| | WI--3 | | LE--8, 16 | | WA--10, 13, |
| Stehwein | WA--2 | Stubbs | EU--27, 28 | | 28, 43 |
| Steinberg | LW4--13 | Studebaker | MA--5, 8 | | WI--10 |
| Steinburgh | LW1--21, 22 | | WI--5, 6, 7, 9 | Teft | EU--16 |
| Steiner | GR--10 | Stull | KA--3 | Tegart | CL--2 |
| Stensbaugh | LW3--42 | Stump | WI--4 | Tegder | LW4--9 |
| Stephens | LW1--18 | Sturd | KA--14 | Tegert | KA--15 |
| | LW6--6, 18 | Sturdevant | LW2--7 | Tella | LW1--27 |
| | WA--26, 48 | Sturdy | PA--6, 7, 8 | Tenney | LW2--23 |
| Sterling | LW3--31 | Sturm | PA--33, 34 | | LW4--14 |
| Stevens | LW3--8, 27 | Stutsman | MA--1 | Tennis | LW2--4 |
| | PA--6, 19, 45 | Sullivan | LW2--20, 21, 26 | Terry | LW1--42 |
| | WA--6 | | LW3--3 | | MA--16, 17 |
| Stevenson | LW2--14 | | LW4--24 | Teter | WA--55 |
| | LW3--27 | | MA--11 | Teters | LW1--27 |
| | CL--17 | | WA--44 | Thacher | LW1--42 |
| Steward | LW1--40 | Sulzer | LE--13 | | LW2--27 |
| Stewart | LW2--1, 9 | Summer | LW1--11 | | LW3--44 |
| | LW3--28 | Summerfield | LW1--39 | | LW4--23 |
| | LW4--18 | Sumner | LW1--11 | | WA--48 |
| | LW6--5, 15 | Sundburg | CL--11 | Theme | WA--60 |

| | | | | | |
|--------------|--------------------|--------------|-----------------|-----------|-----------------|
| Thoman | EU--43 | Tucker | LW1--36 | Vincent | KA--1 |
| Thomas | LW1--20, 38 | | LW3--29, 30 | Vitt | EU--15, 26, 27, |
| | LW3--9, 20, 29 | | CL--5, 14 | | 34, 35, 41 |
| | LW6--5 | | KA--6 | | PA--30 |
| | EU--28 | | PA--16 | Vocht | LW1--39 |
| | GR--9 | Turbett | CL--13 | Vogel | EU--6 |
| | KA--11 | Turner | LW1--16, 17, 28 | Vogle | WA--48 |
| | PA--4, 9, 27 | | LW4--8 | Voorhees | LW3--5 |
| | WA--16, 58, 59, 61 | | MA--15 | | LW4--14 |
| Thompson | LW1--17, 32, | | WA--18 | Vornholt | LW4--1 |
| | 34, 35 | | LW3--28 | Votaw | LE--18 |
| | LW2--12, 18 | Turrell | MA--11 | Voucher | LW6--18 |
| | LW3--4, 11 | Tussey | LW6--3, 4 | | |
| | LW4--15 | Tutt | MA--1 | | |
| | LW6--4, 10 | Tuttle | PA--2, 51 | | |
| | CL--14 | | WA--33 | Wabnite | LW6--19 |
| | GR--3 | | WA--12, 39 | Wabnitz | LW6--19 |
| | LE--18 | Tweed | LW6--21 | Waddell | PA--41 |
| | MA--21 | Tweeney | LW2--3 | Wade | LW6--21 |
| | WA--3, 42 | Tyler | LE--1 | Wadsworth | WA--38 |
| Thorp | LW3--8, 44 | | PA--11 | | MA--23 |
| Thorton | LW2--13 | | WI--3 | | PA--12 |
| | LW3--6 | Tyner | LW4--22 | Waford | MA--9 |
| | WA--18 | | WI--14 | Wafrey | LW3--35 |
| Thralls | EU--13 | Tynkam | LW3--42 | Wagner | EU--32 |
| | WA--29 | Tyrell | LW4--19 | Wakefield | LW1--5 |
| Thurber | MA--12 | Tyson | LW6--5 | | KA--10 |
| Thurman | EU--22 | | | Wakes | WA--46 |
| Thurston | LW3--20, 21 | Udell | LW2--7 | Walker | LW3--7 |
| Thy | WA--55 | | LW4--21 | | LW1--41 |
| Tibballs | LW3--23 | Ulrich | LW4--11 | | LW2--20 |
| Tice | MA--3, 4 | | MA--4, 13 | | LW3--29, 42 |
| Tierman | MA--2 | | WI--4 | | LW4--2, 5, 20 |
| Tilton | LW4--15 | Ulrichson | LW3--20 | | LW6--10, 11, 17 |
| Timmons | LW2--19 | Ulrick | WI--4, 6, 12 | | 18, 19 |
| Tingle | GR--12 | Ulrickson | LW3--20 | | CL--12 |
| Tinkham | LW3--42 | Umberger | CL--17 | | LE--15 |
| Tint | LW4--5 | Underwood | LW3--38 | | PA--26, 48, |
| Tisdale | LW1--34 | | LW6--1 | | 50, 52 |
| Titterington | WA--7 | | EU--24 | Wallace | WA--16, 23 |
| Tobler | WA--56 | Unthank | EU--31 | | LW1--28 |
| Todd | LW2--31 | Unthauk | EU--31 | | LW3--4 |
| | EU--2 | Upton | WA--3 | | LW6--10, 17 |
| | WA--2, 17 | Urban | LE--17 | Wallstien | WA--2 |
| Toll | WA--3 | Usher | LW2--35 | Walquist | WA--11 |
| Tolle | GR--3 | | WA--48 | Walruff | WA--13 |
| Toller | LW3--13 | | | | LW1--22 |
| Tolles | LW1--20, 39 | Vaillancourt | LW5--6 | | LW4--9, 10 |
| | LW6--6 | Vainen | LW4--19 | Walsh | PA--20 |
| Tomberlin | WI--6 | Valencour | LW5--6 | Walter | LE--10 |
| Tomlinson | LW1--38 | Valencourt | LW6--18 | | MA--8 |
| Tone | LW1--21 | Vanambridge | LW3--15 | Walters | PA--50 |
| Tonnies | EU--35 | Vanberger | CL--17 | | WA--24 |
| Toote | LW1--17 | Vancil | CL--10, 11 | Walton | LW2--3 |
| Toothaker | PA--20 | Vandellon | PA--37 | | LW3--44 |
| Topping | KA--11 | Vanderhoof | PA--2 | | LW6--14 |
| Tosh | PA--3, 4 | Vandoren | LW1--14 | | EU--10 |
| Towne | LW1--43 | VanEtten | PA--11 | | GR--2 |
| Townsend | LW6--4, 7 | Vanhoesen | LW1--6 | | PA--6 |
| Trapheagen | LW3--32 | VanHorn | MA--12 | | WA--21, 34 |
| Trask | LW1--18 | Vanhousin | WI--9 | Wannbaugh | LW1--28 |
| Treadway | LW1--42 | VanMeter | LW3--27 | Ward | LW1--9, 40 |
| Treadwell | LE--24 | Vantries | PA--39 | | LW3--19 |
| Tredway | LW1--42 | Varner | WA--18, 26 | | EU--43, 44 |
| Tremper | LW3--36 | Varnum | PA--8 | | MA--17 |
| Trim | PA--20 | Vaughan | PA--43 | | PA--34 |
| Trimble | LE--23 | Vaux | EU--39 | Warder | LW1--14 |
| Trop | LW3--19 | Venigar | LE--19 | Ware | LW3--16 |
| Trout | LW6--19 | Vermilye | GR--5 | | LW4--22 |
| Troutman | LW6--8 | Vernon | LW1--29 | Warne | LW1--15 |
| Trushine | PA--23 | | LE--5 | Warner | CL--1 |
| Tschilling | LW4--24 | Vincent | LW3--6 | | LE--14 |

| | | | | | |
|--------------|---|------------|--|------------|--|
| Warren | LW1--11 LW2--14 LW4--20 LW6--19 EU--12, 18, 25 WA--55 WI--9 | Wessel | GR--13 LW3--13 | Wilder | EU--24 WA--45 |
| Washington | LW4--7 | West | EU--16, 31 | Wildorf | EU--6 |
| Waters | LW3--22 PA--35 | Westerhaus | EU--26 | Wiley | LW3--30 GR--3 WA--56, 57 |
| Watish | KA--7 | Westfall | KA--10 | Wilkins | PA--11 |
| Watkins | LW2--12, 13 LW3--24, 26, 27 CL--6 WA--29 | Westform | LW5--15 | Wilkinson | WA--31 |
| Watros | WA--30 | Westheffer | EU--8 | Will | PA--9 |
| Watson | LW1--35 LW3--23, 43 LW4--19 GR--5, 8, 12 LE--5 WA--5, 36, 37 | Weston | LW3--30 | Willcox | WA--26 |
| Watt | LW2--30 WA--47 | Wetherford | WA--39 | Willet | PA--51 WA--14, 15 |
| Watters | LW1--21, 29 | Wetzal | EU--43 | Willey | WA--35 |
| Watts | LW3--14, 15 LW4--3, 15 MA--14 WI--3 | Weybright | MA--1, 2 WI--10 | Willforne | LW6--19 |
| Wauff | LW6--9 | Whaley | LW2--11 EU--16 | Willhite | WA--36 |
| Waugh | CL--2 LE--2 | Wheadon | LW3--26 WA--16, 31, 58 | Williams | LW1--30, 39 LW2--3, 4, 11 18, 24 LW3--15, 30, 31 32, 37 |
| Way | LW2--10 | Wheeler | LW1--19 LW2--15, 16, 31 WA--43 | | LW4--20 LW5--9, 19 LW6--16 EU--14 GR--10 |
| Waybright | WI--2 | Whipple | LW4--18, 19 LW6--6 PA--35 | | PA--6, 9, 12, 21 WA--11, 13, 3 WI--9, 13 |
| Wear | CL--19 | Whirlow | PA--8 | Williamson | LW4--13 |
| Weatherby | PA--47 | Whisend | LW1--38 | Willis | LW4--11, 12 GR--9, 13 PA--2 |
| Weathers | WA--2 | Whitaker | EU--1 PA--52 WI--4 | Willitts | KA--16 |
| Weaver | LW3--38 EU--1 PA--43 | Whitcomb | LW1--14, 36 LW3--23 | Wilman | LW4--10 |
| Webb | LW3--15, 16 EU--6 PA--14 WA--1 | White | LW1--5, 30, 35 LW2--3, 11, 12 LW3--20, 25, 26, 29, 31, 39 | Wilmoth | WA--41 |
| Webber | LW2--20 LW3--11, 14 MA--1 | Whiteland | LW3--20, 25, 26, 29, 31, 39 | Wilson | LW1--22, 40, 43 LW2--13 LW3--20, 24, 29 35, 42 LW4--6, 11 LW6--7, 16 GR--3, 5 KA--5 PA--46 |
| Weber | EU--36 | Whitlock | LW1--39 GR--7 MA--14 | | WA--3, 41, 42 WI--11 |
| Webster | LW1--32, 34 | Whitlow | LW2--28 | Wimple | WA--51 |
| Wechsldofer | EU--36 | Whitman | LW4--17 MA--4 WA--41 | Winchell | LW1--35 LW2--15 WA--57 |
| Weedlar | LW3--39 | Whitney | LW4--8 LW6--15 EU--18, 28 GR--5 | Winchester | LW6--1 |
| Weeks | LW1--23 PA--9, 10, 44 | Wickersham | LW3--20 | Winfield | CL--10 |
| Weggington | LW3--9 | Wicks | LW3--43 | Winfrey | LW1--20 LW2--31 |
| Weibel | EU--11 | Widney | PA--20 | Wing | PA--21 |
| Weidler | LW3--39 | Wiedeman | LW1--16 LW2--5 | Wingale | WA--49 |
| Weil | PA--32 | Wieman | LW2--5 LW4--10 | Winger | LW4--21 |
| Weingartener | LW5--1 | Wiese | GR--4 | Winn | LW4--8 |
| Weir | LW1--31 | Wiggin | WA--8, 23 | Winnie | LW4--23 |
| Weixldofer | EU--36 | Wiggington | LW3--9 | Winningham | PA--40 |
| Welch | LW3--14, 30 LW5--11 | Wight | LW3--17 | Winslow | WA--6 |
| Wellbourne | LW3--27 | Wilbour | LW2--4 | Winston | LW2--7 |
| Wells | LW2--31 CL--12 KA--2 WA--11, 27, 33 EU--6, 31 WA--55 | Wilbur | LW2--4 LW2--4 EU--8 GR--10 | Winstow | WA--5 |
| Welsh | EU--6, 31 WA--55 | Wilcox | EU--8 | Winter | LW1--30 CL--1, 4 LE--25 |
| Wendle | LW3--38 | Wilcoxson | LW5--15 | Winters | MA--10 |
| Wenstrom | CL--10 | Wild | LW1--33 LW2--19 | Wise | LE--13 |
| Werton | KA--17 | Wilder | LW2--11, 21, 27 LW4--1 | Wiseher | MA--10 |
| | | | | Witch | LW4--4 |
| | | | | Witler | EU--36 |
| | | | | Wittits | KA--16 |

Wizer LE--20
 Wojahn GR--7
 Wolcot WA--13
 Wolfkuhl KA--4, 5
 Wood LW1--11, 17
 LW2--2, 22
 LW5--1
 CL--6
 MA--10, 11
 PA--7
 WA--20, 49
 Woodard EU--4, 24
 WA--29
 Woodey LW3--18
 LW4--20
 Woodfall LW6--12
 Woodruff LW1--12
 Woods GR--9
 Woodward LW1--34, 35
 CL--1, 7, 18
 WA--14
 Woolsey WA--21
 Woostch LW2--30
 Wooster LW1--15
 Worden LW1--24
 Work LW2--14
 Worrall WA--35
 Worrell LW6--20
 Worthington LW1--16
 LE--9
 Wright LW1--23
 LW3--28, 29
 EU--10
 LE--12
 PA--43
 Wrinkle LW6--9
 Wycoff PA--19
 Wyermiller LW2--4
 Wyler LW4--13
 Wyman LW2--4
 GR--2
 MA--21
 PA--27
 WA--61
 Wyme LW3--15
 Wymer PA--11
 Yader LW3--36
 Yager LW3--39
 Yams LW1--29
 Yancey LW3--11, 17
 Yanda PA--9
 Yarnold LW2--18
 Yates LW4--16
 WA--3
 Yeager LW2--10
 LW3--15, 39
 Yeagley LW2--32
 Yeamans WI--11
 Yelvington GR--4
 Yewdall EU--16
 Yock LW3--18
 Yoder LW3--36
 Yokes LW5--15
 Yothers MA--7
 Young LW3--13, 14
 LW5--8
 CL--4
 GR--11
 LE--9
 MA--21

Zerba WI--6
 Zerby LW4--1
 Ziesenis EU--5, 37
 Zimmerman LW1--3
 LW4--1
 GR--2
 Zinn LE--10, 20
 Zipple EU--34

40 years ago 1949

Four survivors of the Quantrill Raid on Lawrence 86 years earlier still lived here. They were Edward Anderson, born in 1862; Alice Peabody Sears, born in 1859; Louisa Preisach Dinglestedt, who had come here in 1860; and Jennie Engle.

40 years ago 1949

Robert McCoy had purchased the former Walker Shoe Store here.

There was an open house planned at Lawrence Junior High to show the many needs and to promote the bond issue for a new high school so the present LHS building at 14th and Massachusetts could become Central Junior High.

(These are from the Journal World of 1989.)

Scoundrel Arrested

A fellow by the name of Lucien Ayer, formerly of New Hampshire, was tried in Rockingham county some three years ago, and being at Liberty on bail, escaped before the jury brought in their verdict. Latterly, it appears he has been figuring rather conspicuously as the "President of the Kansas Bank", and passing off large numbers of bills on that institution to persons in New York, Boston, etc. He was arrested, and is now in Exeter, NH jail, awaiting the sentence of the court at the February term for his former infringement of the law, the jury having found him guilty. We are aware of no Kansas Bank, save it be that which graces the beautiful river, which gave origin to the name of our Territory.

(From Herald of Freedom, 3 Feb 1855.)

THE EUDORA LANDS OF PASCHAL FISH

This is the transcript of a talk given by
Fern Long
at the Lecompton Constitution Hall in May of 1997.

The first known inhabitants of the present Eudora area were the Kanza and Osage Native American Indians. Non-Indians could pass through at their own risk but not settle on the land from 1821-1854. Major Stephen H. Long of Thomas Say's Detachment followed the Kansas River to Manhattan in 1819, but it must have been a drought year as he called Kansas "The Great American Desert". Methodist preachers wrote that prairie grass was so tall it covered a man on horseback.

The Pathfinder of the West, John C. Fremont, traversed the area in 1832 and later the Santa Fe Trail. He noted the area had a mosaic of bluestem prairie grass with oak and hickory forests in the flood plain. An early trail from Westport to Lawrence, through Eudora was called the Westport-Fremont Trail. New Highway #10 follows the route closely.

Dr. Andrew T. Still, son of Missionary Minister, Dr. Abraham Still, was a doctor and founder of Osteopathy and also a Scout Surgeon for Fremont.

Buffalo Bill Cody passed this way because he wrote his name on a rocky cliff along the Wakarusa River but apparently the blasting for the bridge for the new highway dislodged it.

Abolitionist Jim Lane brought slaves through the area and even notorious Quantrill stopped at a Eudora store at least once.

In 1825 the Indians in Kansas signed a treaty restricting their territory allowing for the settlement of unclaimed land west of the Missouri River. President Jackson's Indian Policy proposed voluntary emigration of Eastern Indian Tribes to western lands, 28 May 1830, for Indians living north of Ohio to relocate in Territorial Kansas. In the Indian Removal Act twenty-seven tribes were offered reservation land forever. The Shawnees were allotted the area south of the Kansas River.

The United Tribe of Shawnee started to come to the Shawnee, Kansas area in 1825, with many Bluejacket families. The Tribe of Paschal Fish, Sr. of the Cape Girardeau, Missouri and St. Louis areas did not come until 1831. With Fish was a white man, William Jackson, taken prisoner by the Shawnee while young and raised as their own. He married a Shawnee lady and they had at least six sons and probably one daughter, whose children were named as Paschal's nephews. She was Elizabeth. The boys were Paschal, Jr., Charles, Jesse, John, William and Isaac.

Chief Fish requested a school for the children in the Kansas area,

as his children had been educated in a mission school. The Methodist Episcopal Church started the Shawnee Indian Mission near Turner, Kansas. Chief Fish died in 1834 in Wyandotte County, Kansas and his oldest son, Paschal, Jr., became head of the Tribe.

Paschal Fish, Jr., was born in 1804 in Missouri and he was married before he came to this area and had some children, who were never named. They may have died in one of the terrible epidemics which decimated the Indians who had no immunity to the white man's diseases. They sometimes wiped out whole villages. The Shawnee would flee their homes and hide in the woods. In 1844 all Eudora area Shawnee fled to the woods to escape the cholera epidemic brought by the migrating white people on wagon trains. In 1849 two-thirds of the tribe was afflicted. In 1831, 32 and 52 were smallpox epidemics, malaria in 1835, cholera in 1837, 38, 42, 44, 49, 52, 54 and 55. There were measles, yellow fever and whooping cough in 1852. Paschal was a cousin of Chief Tecumseh and his twin brother, the Prophet.

Paschal, Jr. was married six times. His second wife was Hester Zane, the daughter of Hannah Zane of the Wyandot Indian Tribe of Ohio and related to the Conley sisters, who saved the Huron Cemetery in Kansas City from being moved. Paschal and Hester had four children; 1. Obadiah, born in 1848 who died in his teens, 2. Eudora A., born 1850, died 1877 in LaCygne, Kansas, age 27, 3. Leander Jackson (called Jack), born 1852 and died 1920 in Quapaw, Oklahoma and his twin brother, Andrew J., was #4. He died young before 1860. Hester died in 1852, probably from childbirth or the cholera or smallpox epidemic that year. Then Eudora and Andrew went to live with their grandmother Zane near Kansas City. Obadiah and Jack must have stayed with Paschal or some other relative. The children were probably all born in the Eudora area because Paschal and his tribe moved to the Eudora area in the early 1840's and had a ferry there in 1846. Paschal was a blacksmith and gunsmith assistant for the Delawares in 1837 and 1838 in Leavenworth County. He was a licensed Methodist Minister from 1847-1866, a businessman and a good friend to many.

Wife #3 was Consort Fish, married sometime after 1852, and she died in the 1855 cholera epidemic. Wife #4 was Martha Captain and she died in 1860, just after her name was placed on the Eudora Deed of February 1860, when Paschal sold 774 1/2 acres of his family's land to a German Settlement Group from Chicago, to found a town here. They named the town Eudora after Paschal's ten year old daughter. Paschal and Martha had no children but Martha had a daughter Anna Hamm, 13 years old who joined Paschal's family in 1857.

Paschal married wife #5, Mary Ann McClure Steele after 1860. Paschal was also raising a niece, Mary Ann, who married Sam Wheeler, a white man.

Paschal married wife #6, Jane Quinney, and she and Paschal went to Indian Territory, now Oklahoma, in 1872. They either had a child or she had a daughter. In the 1870 Douglas County Census Paschal was

65 and owned \$2600 in Real Estate and \$350 in personal taxes. The Shawnee Indian Census in 1869 listed Paschal Fish, Leander Fish, Eudora Emmons, Dallas Emmons, Theodore Emmons, Bertie J. Emmons, and Anna Edmonds, as living in Oklahoma Indian Territory.

Paschal Fish, Jr., was listed as one-half Shawnee, one-eighth Miami, one-sixteenth Delaware and five-sixteenth white blood. Blackfish was his God father. Paschal froze to death in February, 1894, at age 90 years. No one knows where he is buried.

Paschal and his brother, Charles, were licensed by the Kansas Legislature to operate a rope ferry over the Kansas River, northeast of Eudora in the area known as Weaver Bottom. Charles and his wife, Mary, lived near with several of their children. Charles married Mary (Henry) Barnett and they had the following children; Elijah, John and Mary (twins), Margaret, Thomas, and Mary had a daughter, Sally Ann. Mary Fish and Nancy died in the cholera epidemic of 1855. Charles paid for several burials in the old Southwest City Cemetery. Dr. Abraham Still's daughter wrote that the Germans encouraged Charles to drink and that caused his death in 1869.

Col. Doniphan blazed the Military Branch of the Santa Fe Trail from Ft. Leavenworth, crossing at the Fish Ferry and through the present area of Eudora to meet the Santa Fe Trail at Willow Springs area, about eight miles southwest. Hundreds of soldiers, wagons, horses, and military supplies followed this shorter route from 1845, mostly in 1846. Many pioneer families also took this short cut to the trail. The soldiers wrote in their journals about the ferry and the Fish family. Paschal also ran a Papin Ferry at Topeka a couple of years.

In 1854, after the Indians signed the treaty to own their reservation land individually, Paschal built the Fish House, a sturdy, hand-hewn log, two room, thatched roof house on the Fremont-Westport Trail, at the south edge of present Eudora near new Highway #10. This house was a stopover for early travelers by horseback, covered wagon, walkers or stagecoach. Paschal provided meals, lodging, blacksmith and other travel needs, such as he could.

C.H. Dickson spent a night there when a young boy and wrote later that there was a sixteen by sixteen foot sleeping room with an open fireplace, one bed and six chairs. Bedding was buffalo robes and quilts from wagons. He slept with thirty-two people there one night while he was there. Wall to wall people!! Governor Reeder stayed hidden at the Fish house one night during the pro and anti slavery skirmishes around Lawrence. Paschal sold his business in 1872 and went to Oklahoma where most of the Indians in Kansas had gone.

Paschal's son, Leander Jackson, called Jack, married four times; 1. Julia Parks, 2. Rosa?, 3. Mary Katherine Large, with whom he had a son, Joseph Pascal, his only child. Wife 4 was Josephine Hertz. Jack promoted Indian Legislation at the Capitol in Washington,

D.C.. His picture and his sons are in the Bureau of American Technology and Smithsonian Institute National Anthropological Archives in Washington, D.C.. He built the National Hotel in Vinita, Oklahoma in 1899. He and Paschal were on the rolls of the Quapaw Indian Nation in 1855.

Eudora A. Fish married Dallas Emmons, 13 May 1868, at Quindaro, Kansas near Kansas City. He was a bridge builder and engineer and built the walls and sidewalks for the Huron Indian Cemetery, sometimes called the Wyandot Cemetery, in 1870, where Eudora is buried.

Dallas took Eudora into Indian country, now Oklahoma, in 1870 and they joined the Cherokee Indian nation; but because of her health, he took her back to Kansas but she died suddenly 10 April 1877 at LaCygne, Kansas in Linn County. A fitting marker was placed at her gravesite in 1979 at the restoration of the Huron Cemetery by the Urban Development and Planning Department of Kansas City.

The four children of Eudora Fish and Dallas Emmons were; Theodore Pascal Emmons, born 1869 at Thayer, Missouri, and he died in 1951 in Oklahoma, Bert James Emmons, born 1870 at LaCygne, Kansas and died 1900, enroute home from the Spanish-American War, Hettie Emmons was born 1872 and died in 1873 at nine month of age. Adelia Adair (called Nellie), was born in 1875 and died in 1900. She married and had a daughter.

Theodore Emmons had four children by wife number one, Clara M. Hopkins. He married Sarah Caroline (Carrie) Hall of Virginia next and they had four children; Jerome M. Emmons, Eudora Emmons born 28 Nov 1913 in Oklahoma, Marjorie Emmons, born 1915 and Grace Emmons. Eudora and Marjorie visited Eudora and were proud of their connection to Eudora. They were guests in my home. Both are in poor health, living in Broken Arrow and Wann, Oklahoma now. Eudora married Louie Reed and has two sons. Marjorie married Francis Rhodes and raise a niece.

Dallas married his second wife, Hannah (Zane) Maglie, Eudora's cousin, in 1880 and they lived in LaCygne, Kansas.

DR. ABRAM STILL AND THE INDIAN MISSION

Paschal Fish, Jr. asked for a school in 1851 and Rev. Abraham Still, a Methodist Minister and Missionary was sent to build and operate a Mission school for the Indian Children, near where the Wakarusa meets the Kansas river. The school building was a two-story, hewn log house with two rooms upstairs and two down and had a thatched roof. It was on Section 8, Township 13, Range 21, about a mile from the river at about 1215 Elm Stret in present Eudora.

Abraham Still was a minister, medical doctor, farmer, carpenter and teacher. He married Martha Poage Moore and they had nine children, seven of them moved to the mission in 1852. Martha agreed to come to the Shawnee Indian reservation, in spite of the fact her

grandfather was killed by the Shawnee.

Their son, Dr. Edward Still, remained in Bloomington, North Carolina and took over his father's medical practice. Dr. James Still helped his father at the mission, preached and practiced medicine many years in town. Another son, Dr. Andrew T. Still, with his wife, Mary Elvira, came to the area in 1853, where he practiced medicine in Eudora, Baldwin and Palmyra. He was also a farmer, had a sawmill, was a member of the Kansas State Legislature on the Free State Party ticket in 1857. He was Freemont's Scout Surgeon and a Hospital Steward in 1861-62 for the 9th Kansas Cavalry and Captain Major of the 21st Kansas Volunteer Troops. He founded Osteopathy and moved to Palmyra where he was a member of the Palmyra Town Company. He gave a quarter section of land for Baker University in 1855. He was the father of twelve children, many dying young. His wife taught at the Mission school and was one of the first women teachers in the state.

Barbara Still married Frederich Vaughn and moved to Palmyra in 1860, where they ran a general store and bought most of the town, Thomas Still went to medical school and went to California by ox team in 1863 and practiced Osteopathy. Cassandra Still and her husband, Dr. James McCollum, married in 1862 and went to California with her brothers, Tom and John. John was a Union soldier and lawyer.

Mary M. Still helped teach at the Mission School at age 13 but she and John, Marovia and Cassandra went to a private school in Lawrence. Mary married Rev. T.M. Adams in 1863 but she started preaching at age eighteen, was Assistant Principal of Baker University in 1858 and taught for her father at Clinton and Blue Mound. She organized a Sunday School Class for black people at Lawrence. She lost everything in the grasshopper plague of 1874 and had seven sick little children, went to Topeka and then on to California. She wrote a biography of her sad life.

Marovia Still married Ezekiel C. Clark of Baldwin and they farmed, living near Baldwin forty-five years on the Still property. Her two sons became doctors. Her Mother, Martha, died at her home in 1808.

Dr. James Still had a son, Summerfield, who went to Baker University and then Medical School. He was a teacher, merchant, minister and lawyer. James practiced until 1898 and married a Eudora lady, Ella Daugherty. He founded the S.S. Still School of Osteopathy. Their son, George, was born at Eudora in 1882 and also became a Doctor.

The Still family had a great influence in Douglas County. The Mission had to close in 1854 because of the slavery problem that split the Methodist Church, as Abraham was opposed to slavery.

The Stills said Paschal Fish was their dearest friend.

OREGON TRAIL

The Oregon Trail was just south of present Eudora. Some traveler's used the Bluejacket Crossing (or Ford) on the Wakarusa river. Several crossings were probably used but the ones shown on the maps are between Spring Creek and the Little Wakarusa. The riverbed is solid rock there so the covered wagons would not mire in the river mud when crossing. At this crossing was a trading post run by the Bluejackets and later by a German, Billy de Graffenreid and sold out to Carl Bundshu in the 1850's. They lived nearby and sold before 1860. The mileage of Pioneer trains from Westport matches this crossing area instead of the farther west one.

EUDORA FOUNDED

Paschal sold 774 1/2 acres of his family's land to a German Settlement Group from Chicago in 1856 for \$10,000, but later bought back the odd numbered lots. Eudora was incorporated as a city in the fall of 1858 under Territorial laws. In April 1857, a group of sixteen German men, four women and some children, led by Peter Hartig, arrived at the Fish House to build the town. Their expenses were paid by the Chicago group. The formal title of Eudora was passed February 4, 1860 and signed by Indian Agent Newsom, Paschal and his family.

The first election was held 10 March 1859, and Fred Faerber was elected Mayor. Records of the City Council were written in German for many years. Eight more men came later in 1857, paying their own way. Other families came later. These founding fathers were stoncutters, carpenters, cabinet makers, a doctor, blacksmiths, wagon makers, framers and businessmen.

They first built an 18 foot by 20 foot log cabin, in which everyone during the first summer. A circular saw and corn cracker was set up the first summer with money from the Chicago group. The first post office operated that fall. Eudora's original seal is on the front of the Eudora Heritage Book. A City Hall and School were built in 1860 and is still standing as a residence. Charles C. Durr was elected Mayor in 1860 and Paschal Fish was in Washington, D.C. seeking answers to tax questions. Eudora was spared the pro-slavery skirmishes but there was a pro-slavery militia at Bluejacket crossing and Quantrill rode through Hesper killing one man as he and his gang rode to destroy Lawrence. Many Eudoran's helped Lawrence rebuild by hauling lumber, stone and other supplies. Charles Durr even took his sixteen hitch of oxen to Lawrence.

Early Eudora businesses were located along the Wakarusa and were, the saw mill and flour mill, grocery stores, department stores, blacksmiths, livery stables, brick plant, drug store and hotels. Some of the names were; Brenders, Hartigs, Schleifer, Hobbs, Guflers, Pilla Brothers, Ziesenis, Getker, O.G. Richards, Durrs, etc.

There was a subscription school in Eudora in 1858 and a school for black people of all ages built in 1865-66. The Catholic Church was built in 1864, but before that the Catholic people would have to

spend the entire day walking to Lawrence or if a priest came through, the Jewish Andreas Brothers would push back their counters in their store and services were held there. The Catholic school was held in the two room parish that priests built in 1865.

Hesper was a small town of Quakers or Friends southeast of Eudora, started in 1854 with a grocery store, blacksmith shop, school, church and cemetery. Clearfield was another small town south of Eudora with a grocery, blacksmith, church, cemetery and school built in 1866. Weaver was northeast of Eudora on fertile bottom land and had a grocery, depot, post office, and school. Now all buildings not being taken by the river are being town down because of the river cutting the land off. German Methodist and Evangelical Churches started in 1859 were served by Circuit Rider Ministers. Many people spoke German until World War I.

Eudora's Southwest City Cemetery was started in 1857. There was a jail in the basement of the old City Hall and School and an old fort like corncrib in the alley between Main and Elm streets, between 7th and 8th streets.

This has nothing to do with Paschal Fish's land but I love poems and this one is in our Eudora Heritage Book from Alma Gerstenberger that her father wrote down for her to learn.

Dried Apple Pies

Of all the things that I dislike
Don't give me dried apple pies.
The farmer takes his earliest fruit
'Tis wormy, bitter and hard, to boot.
He leaves the hull to make us cough
And don't take half the peeling off.
Then on a dirty cord they were strung
And from some chamber window hung
And there they serve as a roost for flies
Until they are ready to make into pies.
Give me the toothache or tell me lies...
But don't give me dried apple pies.

Submitted by Fern Long, Box 125, Eudora, KS 66025



The Pioneer
Douglas County, Kansas Genealogical Society, Inc.
P.O. Box 3664
Lawrence, Kansas 66046-0664

FORWARDING AND RETURN POSTAGE GUARANTEED
ADDRESS CORRECTION REQUESTED

